



KONICA MINOLTA

# bizhub c350



- Full Colour 22 ppm*
- Monochrome 35 ppm*
- Document Handling*
- Network Print & Scan*
- Internet Fax*
- Data Security System*
- Multi-Finishing Functions*
- Universal Design*



The essentials of imaging

**Advanced network imaging products  
with the freedom to do business more**





that empower you  
intelligently.

# bizhub

Introducing Konica Minolta's bizhub. An innovative new brand that lets you open new doors to success.

## ***Freely conduct business—regardless of time or place.***

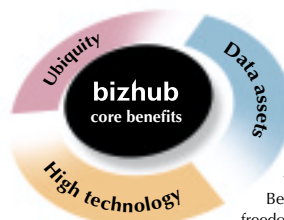
The power of freedom. The freedom to access the information you need, anytime from anywhere, to take efficiency to the maximum. That's what Konica Minolta's bizhub products are all about. Whether at home, in transit, or even at a client's office, no matter where you're connected with bizhub, you're doing business faster and smarter than ever before.

## ***Put yourself at the forefront of information application.***

Exchange. Enhance. Manage. With bizhub's innovative technology, you'll adeptly use information in ways that never existed before. You'll access seamlessly while increasing the value of information by sharing, enhancing, and more efficiently managing it, thus creating a valuable pool of data in the process. bizhub gives you the ability to convert information into assets.

## ***Connecting people through a reliable, state-of-the-art technology.***

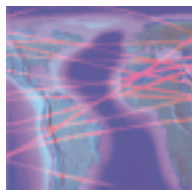
bizhub's advanced technology arms you with a host of empowering tools. Innovative functions, high-quality imaging, and user-friendly operation all working fluently together to bring you to a higher level of productivity. So connect with bizhub and connect with a more intelligent way of doing business.



### ***The core benefits inherent in all Konica Minolta bizhub products.***

Ubiquity. Data assets. High technology. At Konica Minolta, strict attention is always focused on ensuring that these three benefits are at the heart of every bizhub product. Because it's these core benefits that empower you with the freedom to do business more intelligently.

# bizhub's all-encompassing features you with intelligent business options.

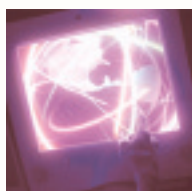


**Innovative ways to utilise information that significantly enhance business performance.**

## *Scan and Send*

**Convert paper documents into electronic data for network use and swift distribution of persuasive colour documents.**

- The high-speed network scanner, which comes as standard equipment, scans both colour and black & white documents at 35 pages/min\*.
- Forwarding functions, such as Scan to e-mail, Scan to HDD, and Scan to FTP, let you quickly distribute and share scanned data.



## *Management*

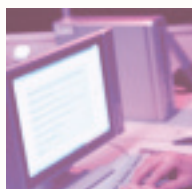
**Manage the information in your office more effectively to better utilise data resources.**

- For smooth data sharing, distribution, and output, use the Box function to assign boxes on the optional 40GB hard disk drive for each member of your staff.
- Document handling software raise efficiency by letting you manage both scanned data and PC data together.

## *Data Security*

**A host of reliable security functions help to protect the important data in your office.**

- By assigning a specific password to each job, you can restrict access and output to select people.
- The Random Erase Format function for the hard disk drive and Automatic Job Data Erase function prevent unauthorised data reuse.
- The use of an encryption protocol for data communication keeps all data safe and confidential.



**Rapidly outputs impressive documents in both colour and black & white, and in a variety of forms.**

## *Versatile Document Output*

**Output attractive, persuasive documents that are sure to impress.**

- The standard network printing function makes it easy to print documents right from your PC.
- Select from a wide variety of paper, ranging in size from A6 to A3 wide, and types from thick paper to labels.
- Versatile booklet creation and finishing functions let you create professional documents entirely in-house.



## *High-Quality, High-Speed Performance*

**Reproduce documents beautifully and quickly, just as you envision them.**

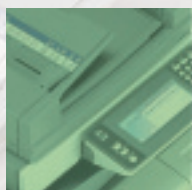
- New imaging technologies deliver superior reproduction of both text and graphics.
- The high-speed tandem engine outputs full-colour documents at a speedy 22 pages/min\* and black & white documents at 35 pages/min\*.
- Auto Colour Selection (ACS) lets you quickly copy mixed colour and black & white documents.



**Easy-to-use, ergonomic styling ensures comfortable operation.**

## *Universal and Ecological Design*

- Whether originals or copies, the two-tone body colour improves the visibility of the documents after they've been output.
- The control panel reflects universal design principles throughout, as seen in the size and layout of the buttons, and the easy adjusting tiltable panel.
- The front-access design greatly simplifies toner and paper replacement.



\* A4 Crosswise



# surround

## CONTENTS

### *Network Functions.....P6~9*

- *Scan and Send.....P6*
- *Network Management .....P7*
- *Data Handling .....P8*
- *Document Management .....P9*
- *Security .....P9*

### *Versatile Document Output...P10~11*

- *Network Printing .....P10*
- *Convenient Functions.....P11*
- *Paper Handling and Finishing Functions.....P11*

### *High-Quality and High-Speed ...P12~13*

- *Superior Images.....P12*
- *Swift Output.....P13*

### *Universal Design .....P14~15*

# bizhub c350

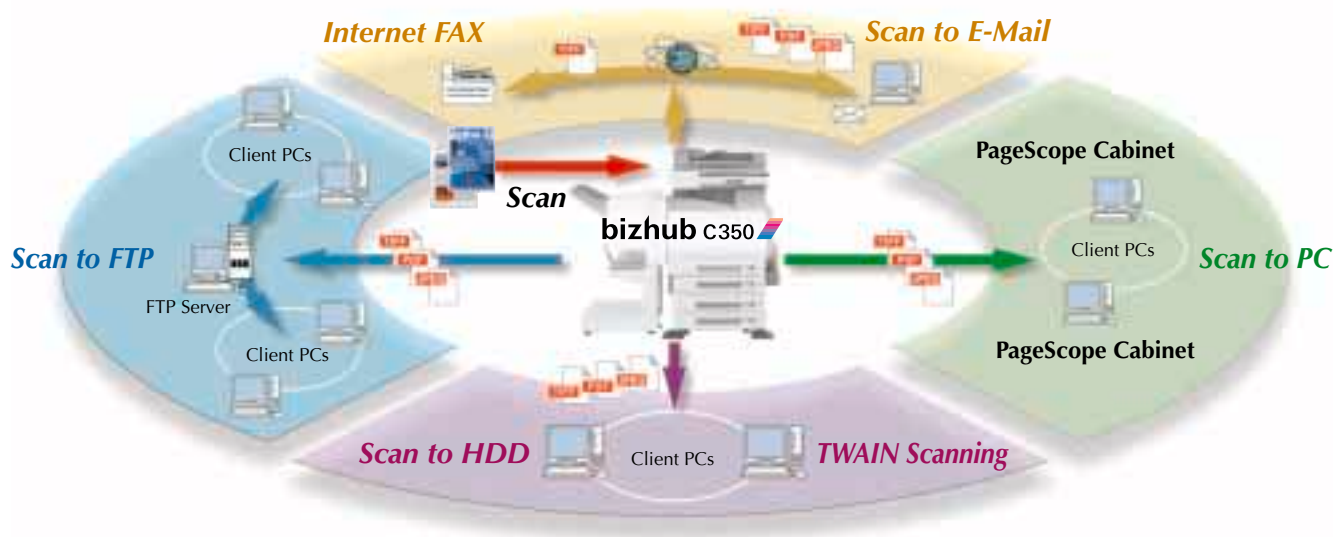


# Network Functions

## Scan and Send

Thanks to its ability to scan swiftly at 35 pages/min\*, the C350 provides a standard network scanner function that lets you quickly convert paper documents to electronic data. Your electronic data can then be easily sent to locations within the office or outside the workplace. Overall, the C350's colour scanner function makes it easier to utilise colour documents in a wide range of applications.

\*A4 Crosswise, 600dpi (both colour and black & white).



### Speedy scanning and user-friendly formats for superior management

#### [High-Speed Network Scanning]

Scanning at a swift 35 pages/min\*, the C350 converts even lengthy documents into electronic data quickly and efficiently. The scanned data can be converted into user-friendly formats such as TIFF, JPEG or PDF, which enable the utilisation of the information on various platforms. Furthermore, by using applications that support TWAIN, the scanned data can be pulled into any PC on the network.

\* A4 Crosswise, 600dpi (both colour and black & white).

### Attach scanned data directly to e-mail

#### [Scan to E-mail]

Use the control panel to input an e-mail address and subject title. Then, you can send scanned documents directly from the C350 as e-mail attachments not only to PCs in the network, but to mobile computers outside of your office via internet as well. It's quick and easy, and it can also help reduce communication costs.

### Cut costs by sending long-distance faxes over the Internet

#### [Internet Fax Function\*]

Trim your communication expenses by using the C350 to send long-distance faxes over the Internet\*.

\* The destination fax machine must support Internet faxing.

### Easy and speedy data transfer using address registration function

#### [2,100 Address Capacity]

You can register up to 2,040 individual and 60 group e-mail addresses as destinations for sending data. The C350 can scan a document and send the data directly to selected addresses, a server, and multiple PCs at the same time.



For easier management, you can group addresses into indexes using the control panel. You can have up to 17 indexes with up to 120 addresses in each.



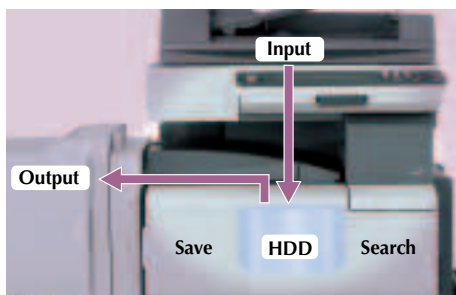


## Data can be stored in "boxes" on the hard disk drive

### [Scan to HDD\*]

Scanned data can be stored in the optional hard disk drive. The C350's scanning and hard disk drive storage not only take you a step closer to a paperless office, they also promote centralised data control and efficient management and sharing of information as well.

\* Optional hard disk drive HD-501 is required.



## Large-volume of data can be distributed quickly

### [Scan to FTP]

You can scan a document and send the data directly to a designated folder on the FTP server, where it can be accessed by authorised people on the network. For sharing information that's too large to be sent by e-mail, this function is extremely useful.

## The data storage location is notified and the sharing of a document is promoted

### [E-Mail Notification of Data Storage Location]

When you use the Scan to FTP or Scan to HDD functions to send data to a server or to the C350's hard disk drive, the C350 can also send out e-mails informing people where the data is stored. Have the C350 save the scanned data to the server and send e-mail messages with the location. The data can then be accessed by those who need it, without burdening the network, e-mail server, or individual hard disk drives.

# Network Management

## ■ LDAP Compatibility

The C350 supports the Lightweight Directory Access Protocol (LDAP) for accessing directory databases, which have the network users' mail addresses and IP addresses on the network. It searches for a destination e-mail address in a LDAP server by operating the C350's control panel. Up to 120 addresses can be searched in a single operation, and the entire set of addresses retrieved can be registered into the C350. This makes synchronisation with the LDAP server which manages the latest information such as address changes possible.

## ■ PageScope Address Book Utility

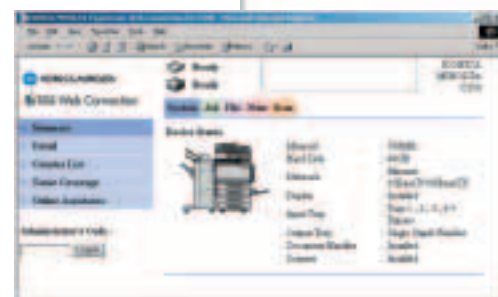
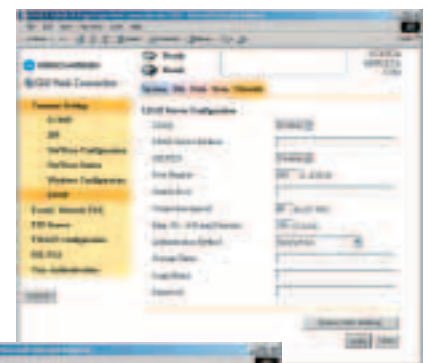
E-mail addresses transferred in a batch from a network PC can be registered into the C350's address book. The change and deletion of addresses or the removal of address locations is also easy. E-mail addresses registered in the C350 can also be backed up on a network PC.

## ■ Network Authentication Function

This function improves security by letting the system administrator prohibit specific users or PCs from accessing the C350 through the network. Likewise, specific users or PCs can be authorised to have access.

## ■ PageScope Web Connection

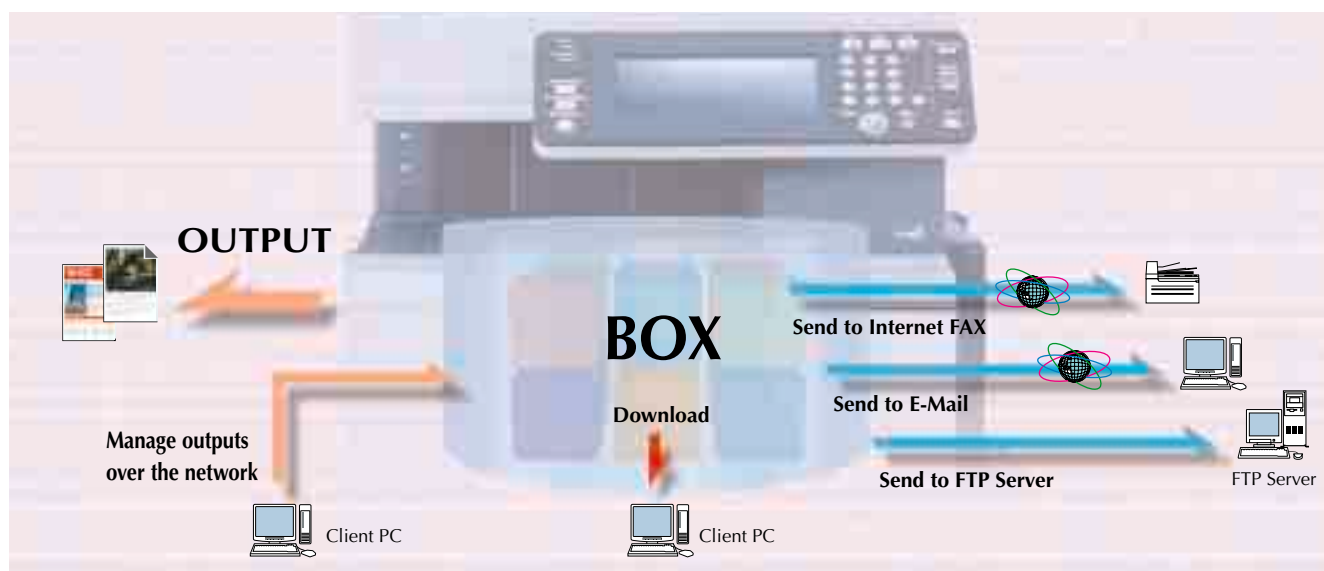
Built-in utility software lets you make detailed settings on the C350 and check its operating status using a Web browser. Model-specific settings, such as destinations for scanned data, can be entered and changed on the network. Since the operation is done on a Web browser, there is no need to install any special software.





## Data Handling (Compatible with the standard controller only.)

The Box function lets you store scanned data and other data on the C350's hard disk drive. For example, you can assign storage boxes to individual employees, work groups, or projects, making it easier to access, share, and apply data efficiently. Data in the boxes can be transferred to the FTP server or sent as e-mail attachments by operating the control panel of the C350.



### Efficient, flexible data management with up to 200 file boxes

#### [Box Function]

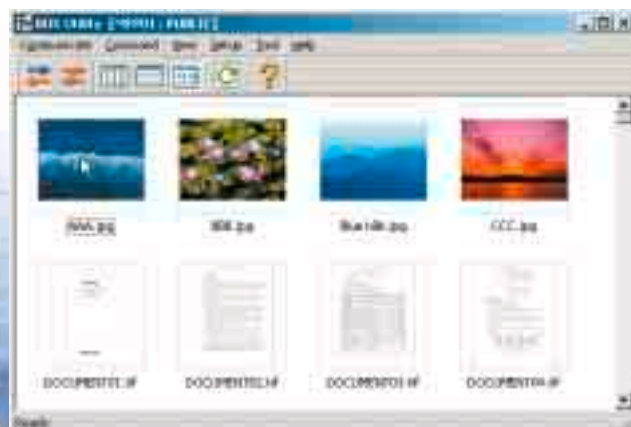
When the optional 40GB HD-501 hard disk drive is installed and used as a file server, it can be divided into as many as 200 boxes. You can take advantage of this feature in a number of ways. Furthermore, this data-subdividing/storing function is quite useful for data sharing in a large size work group.

### Control of HDD data from PC

#### [Box Utility]

- The multi-file preview function lets you find a particular file from among many with just a glance.
- The Box Utility lets you print out the scanned image data that has been accumulated in a box.
- You can change their file names or delete the files in the box right from your PC.
- The files in the Box can be easily converted to a compact PDF file\*. This function allows you to reduce the file size for e-mail attachments or for saving on a PC without overloading the network or hard disk drive.

\*Konica Minolta's unique document-handling technology, which distinguishes image areas from text areas of scanned data, provides optimum compression for each area.





## Document Management

**Scanned documents are automatically processed into an easy-to-use, easy-to-see format**

### [PageScope Cabinet]

Scanned data can be easily transferred with their images automatically corrected according to your needs. With easy-to-see thumbnail image displays and by using a simple drag & drop operation, PageScope Cabinet lets you sort documents into groups, as well as organise and combine them the way you want.

### ■ Contents shown in thumbnail form

You can list each document in thumbnail form. This allows you to visually confirm the content of your document without opening it.



### ■ Speedy Search Function

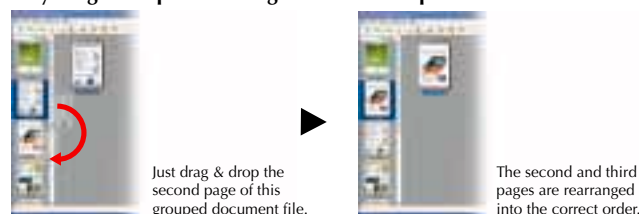
When additional graphical annotation, such as a line, stamp or text key word, is attached to the registered documents, you can quickly search for the documents by name, date or key word.

**Utilise documents in your PC regardless of their format**  
**[PageScope Work Palette\*]**

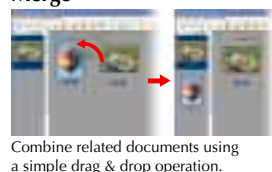
Konica Minolta's PageScope Work Palette makes it easy to group or rearrange documents in simple page units, even when the documents have been created using different applications. It also lets you extract the necessary parts of existing data to easily create new documents. Combined with the C350's finishing functions, it allows you to quickly create attractive documents in-house.

\* Optional (Adobe Acrobat is required to perform these functions). Not sold in some areas.

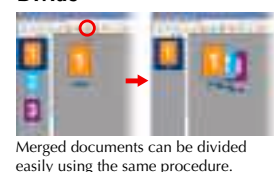
### Easy drag & drop to rearrange document sequences



### Merge



### Divide



## Security

Transmitting documents over networks makes information much easier to share and use, but it also gives rise to security issues. Konica Minolta has addressed these issues by developing extensive security features to help keep your intellectual property and personal information safe.

**Protect sensitive data**

### [Password Protection]

This function limits access to the scanned data with its password setting. Plus, the Lock Job function prevents users from printing out without entering the correct password, and also protects confidential data.

### Lock Job Function



**Data can be safely deleted**

### [Random Erase Format Function]

When the C350's hard disk drive is reformatted, all data is overwritten with random numbers. Residual magnetism is completely erased, so deleted data cannot be restored even with decryption software.

**Protect information by automatic data deletion**

### [Automatic Job Data Erase Function]

You can set the C350 to delete job data from file memory as soon as the job is output. This eliminates the possibility of someone outputting the data again.

**Secure data communication**

### [Data Communication Encryption Function]

The C350 uses the SSL encryption protocol when transferring data to and from the LDAP server, PageScope Address Book Utility, and PageScope Web Connection. This keeps all data on the network safe and confidential.



# Versatile Document Ou

## Network Printing

### Network Printer Function Standard

#### [High-Speed Network Printer]

The C350 features a high-speed network printer function that lets you print documents and graphics from any PC on the office network. As soon as you set up the C350, you're ready to produce vibrant, full-colour prints at 22 pages/min\* or 35 pages/min\* in crisp black & white.

NOTE: The C350 supports a variety of network protocols, such TCP/IP and IPX/SPX, for transmitting data through 10BASE-T/100BASE-TX. It also supports IPP (Internet Printing Protocol).

\* A4 Crosswise

### Meets advanced graphic needs

#### [Image Controller Fiery X3e 22C-KM]

The optional Fiery Controller allows high-quality PostScript output. Adding this option gives the C350 the capabilities to meet the needs of graphic designers and other professionals requiring high-end imaging.

## Convenient Functions

### ■ Multi-job Function

The C350 can perform multiple jobs simultaneously. A job-list feature lets you input up to 50 jobs, such as scanning and printing, while another job is being carried out. Furthermore, you can change the order of jobs, delete jobs, even combine data already stored in the machine.

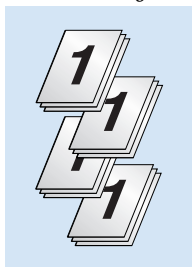
### ■ Print to HDD

This function stores the printing data in the optional hard disk drive. By registering frequently used data on the hard disk drive, you can print out documents quickly by operating the control panel without having to open your PC's application software. Your stored jobs can be viewed on the control panel, and the data is retained even if the main power unit is turned off.

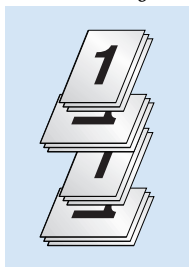
### ■ Electronic Sorting/Crisscross Sorting\*

With this function, you can output and produce multiple sets of sorted copies with the correct paper order.

#### Electronic Sorting



#### Crisscross Sorting



\* Works only when outputting on A4 or B5 size paper, and when the optional Reverse Automatic Document Feeder DF-601 is attached. Crisscross sorting requires A4 and B5 output paper to be set in both lengthwise and crosswise directions.

### ■ Proof and Print

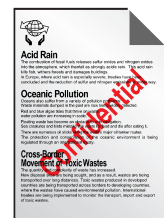
This function automatically outputs one full set of prints as a sample before beginning a multiple-copy print run. Check the staple location, print density, and other factors before the final printing. If there's an error, you can adjust the settings without re-scanning the originals.

### ■ 2-in-1 & 4-in-1 Copy/N-up Print

Save paper by printing two or more pages of originals onto a single sheet of paper. To further minimise paper consumption, you can combine this function with duplex function and print up to 32 pages of originals onto a single sheet.

### ■ Watermark Function

The C350's watermark function saves you time and hassle by automatically stamping each document with a watermark such as "Confidential," "Property of (your company name)," or other, as it's being output.



### ■ 2-Colour Copy/Print Mode\*

The C350 can output in two colours: black, and a colour selected from six available colours.

\*The optional Image Controller Fiery X3e 22C-KM is unable to perform 2-colour printing.

#### Original



#### 2-colour copy



### ■ Departmental Management Function

You can register up to 999 departments and monitor the number of copies and printouts from each. This allows each administrator to have total control of printing in every section.



## Paper Handling and Finishing Functions

**Wide range of outputs—from large quantity to small-lot production**

### [All-around Paper Feeding]

The C350 can hold up to 3,400 sheets\* of paper (80 g/m<sup>2</sup>), so you can print long runs without replenishing paper supply. The C350 accommodates paper from A6 to A3 wide (311mm x 457mm) and can print on thick paper, label sheets, and coloured paper to meet a variety of needs. Available with the use of Multi-Purpose Cassette or 150-sheet Multiple Bypass Tray.

\* When the optional 2,500-sheet paper-feed cabinet PC-401 is mounted.



**Automatically switches trays when paper runs out**

### [Auto Tray Change Function]

When the paper-feed tray in use runs out of paper in mid operation, the C350 automatically switches to another tray that has paper of the same size in the same orientation. The empty tray can be replenished even as the C350 continues to print, providing you with extended print runs without any downtime.

**Create professional documents on demand**

### [Various Finishing & Booklet Functions]

An array of versatile functions enable you to efficiently produce impressive, visually-impactful documents such as manuals, direct mailers, proposals, and more. Speeding up the process is the optional FS-601 with its automatic processing technology from output to folding and binding—ensuring pro-like results for whatever you create.



#### Types of Finishing Functions

##### ■ Stapling Functions



Corner Staple



2-Point Staple (Side)



Left-Side Holes



Top-Side Holes

##### ■ Hole-Punching Functions



##### ■ Fold and Saddle-Stitch

#### Booklet Function



8 Single-Sided Originals



2-Sided Output onto 2 sheets in the correct order

Fold and Saddle-Stitch

Completed

#### Finishing Functions

	FS-501	FS-601	FS-601+PK-501
Shift Sort	Yes	Yes	Yes
Corner Staple	Yes	Yes	Yes
2-Point Staple (Side)	No	Yes	Yes
Hole Punch (Left-Side Holes)	No	No	Yes
Hole Punch (Top-Side Holes)	No	No	Yes
Fold and Saddle-Stitch	No	Yes	Yes



# High-Quality and High-Speed

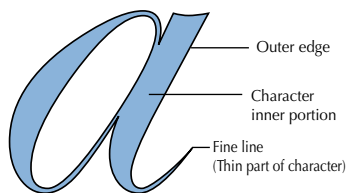
The demand for digital colour documents is growing. Drawing from its vast experience in imaging, Konica Minolta is developing advanced colour copy/print technologies—like those found in the C350—in response to this demand. Advanced technologies such as improved scanning accuracy, advanced image processing, and polymerised toner for vibrant colour reproduction just to name a few. Better yet, you'll see the results of Konica Minolta's leading technologies in the C350's superior output quality.

## Superior Images

### Improved text reproduction

#### [Character Zone Micro-Separation]

When scanning a document, this function distinguishes between text and graphic areas. For text, it also clearly delineates the outer edges and inner portions of each character. Since this processing technology provides optimum text/graphic setting, the C350 offers superior reproduction with minimal blurriness and smears, even in multi-generational copies.



### Beautiful graphics and text in business documents

#### [Oil-free Toner and Improved Reproduction of Characters on Halftone]

The C350 utilises oil-free polymerised toner. This advanced toner provides natural-looking outputs where images have less gloss, making it possible to write directly on the image. The C350 reflects significant quality improvements in reproducing text and other characters on halftone dot backgrounds. For example, with the C350 it's easier to read the text in documents that have various background patterns such as maps and graphs.



### Micro-particle polymerised toner provides superior reproduction

#### [Polymerised Toner]

The C350 uses polymerised toner with small, highly uniform 6.5µm particles that provide outstanding image quality. Also, in keeping with our environmentally-friendly mindset, the toner emits only extremely minute amounts of toxic substances during its manufacturing.



Particles are uniform in size and shape.

Polymerised toner	Conventional toner
image	image





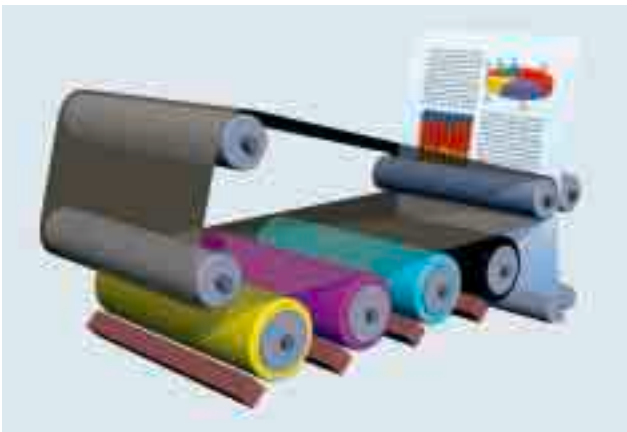
## Swift Output

### Fast, high-quality colour output

#### [High-Speed 4-Colour Tandem Engine]

In previous models, the transfer process was performed separately for each of the four (CMYK) colours. The C350 does it in a single step, thanks to its high-speed, 4-colour tandem engine. This lets the fast-working C350 output 22 full-colour pages/min\* or 35 black & white pages/min\*.

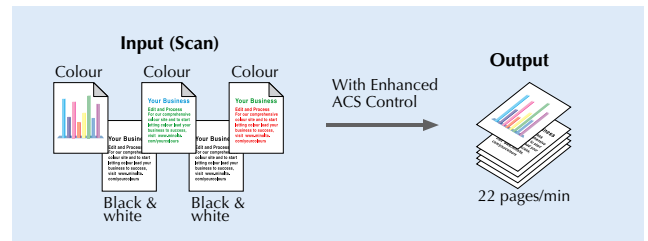
\* A4 Crosswise



### Superior colour and black & white recognition for faster copying

#### [High-Speed ACS Function]

The Auto Colour Selection function instantly detects whether a page is colour or black & white. So when copying documents with both, this function greatly speeds up the output performance of the C350.



### Scanning assorted size originals

#### [Mixed Original Mode]

The C350 automatically detects the size of each sheet of paper set in the automatic document feeder, and chooses the appropriate copy paper size. This means that you can copy a set of mixed size originals without taking the time to sort them.





# *Universal Design*

With today's emphasis on safety and ergonomics, it's important to choose office equipment that minimises stress on users. Konica Minolta has adopted universal design elements that help make its equipment appealing to the eye, and comfortable to operate for men and women of all ages and physiques. In the C350, you'll find these features and more.



## New panel design improves visibility and ease of use

### [Universal Design Control Panel]

The control panel—a critical factor in operating ease—features a large LCD that shows all indications clearly. All buttons have easy-to-understand names and enhanced contrast for excellent visibility. The panel angle can be tilted 7, 27, or 45 degrees to suit the operator.



■ The contrast of the display is adjustable.

■ The LCD panel display can be enlarged for easier viewing.

■ The ten numeric keypad buttons are large and easy to operate.

■ Buttons have large, easy-to-see indications and a simple, logical layout.





### **Body colour is both appealing and practical**

#### **[Improved Visibility to Identify Paper Easily]**

The two-tone-coloured body design of the C350 is both attractive and innovative. Its dark coloured parts, such as the document feeder tray and paper output tray, make it easier to see when a job has been completed.



### **Front access for quick toner replenishment**

#### **[Toner Front Access Design]**

The C350's time-saving front access makes it easy to remove a depleted toner cartridge and install a new one.



### **Simple paper path for easy jam removal**

#### **[Improved Paper-Jam Processing]**

The C350 introduces a simpler paper-path design and a wide-opening right side cover. These features let you remove paper jams quickly and easily by simply opening only a single cover.



### **Easy-to-grip handles for convenient paper refills**

#### **[Free-Grip Handles]**

You can grip the handles from either above or below. This provides you with better leverage for opening or closing the paper-feed cabinets, including the one at the very bottom.



## C350 Specifications

<b>General</b>	Type:	Desktop Full-Colour Copier/Printer/Scanner	<b>Paper Handling</b>	Type of Originals:	Sheets, Book, 3-D Objects	<b>Copy</b>	Copy Speed:	Colour: 22 pages/min* B / W : 35 pages/min*
	Process:	Indirect Electro-photographic System		Original Size:	Max: A3 (Ledger)		1st Copy:	Colour: 12.8 seconds or less* B / W : 6.8 seconds or less*
Gradation:	Memory:	256 gradations	Paper Capacity:	Standard:	900 sheets (250 Multi-Purpose+ 500 Universal+150 Multiple Bypass)	Resolution:	Magnification:	600dpi x 1,800dpi equivalent
	Warm-Up Time:	256MB (Max: 512MB)		Max:	3400 sheets (250 Multi-Purpose+ 500 Universal+2500 LCT+ 150 Multiple Bypass)		Exposure Modes:	Text/Photo Mode, Photo Mode, Text Mode, Printed Image Mode, Map Mode, Copied Image Mode
Power Consumption:	Dimensions:	99 seconds or less	Output Size:	A6 to A3 (4-1/4" x 5-3/4" to 11-3/4" x 16-1/2")	Materials:	Multiple Copy:		1-999
Weight:		1.5kW or less		Postcard: 100 x 100mm (4" x 5-3/4")				*A4 Crosswise
		706 (W) x 730 (D) x 770 (H) mm (27-3/4" x 28-3/4" x 30-1/4")		A3 Wide: 311 x 457mm (12-1/4" x 18")				
		112kg (247 lb.)		Plain Paper (56-90g/m <sup>2</sup> )				
				Thick Paper (91-256g/m <sup>2</sup> )				
				OHP Sheet*, Postcards*, Envelopes*				
				Label sheets*				
				*First drawer and Multiple Bypass				

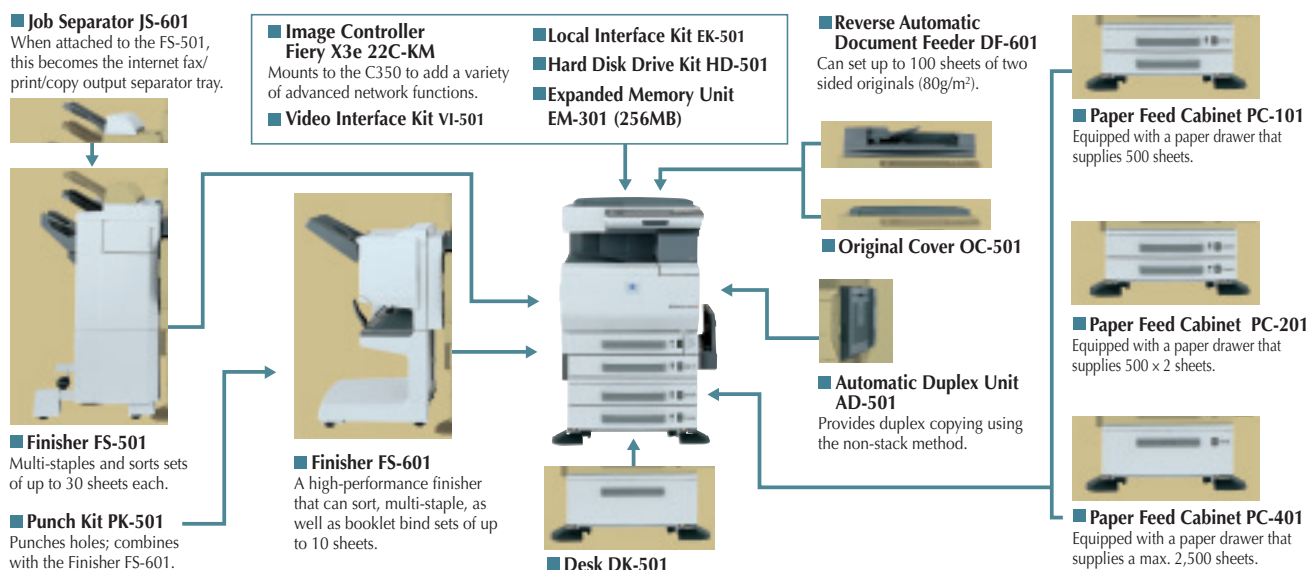
## Standard Controller Specifications

<b>General</b>	Type:	Embedded	Printer Languages:	PCL5c	Protocol:	TCP/IP, SMTP/POP3, FTP, LDAP, HTTP
	CPU:	MPC8245 350MHz*	Fonts:	PCL Font (45 fonts)	Operating System:	Windows 98/Me, Windows NT4.0/2000/XP
	Memory:	Standard: 256MB (MAX: 512MB)*		Bitmap Font (1 font)	Data Format:	TIFF (MMR), PDF (MMR, JPEG), JPEG
	Operating System:	Windows 98/Me, Windows NT4.0/2000/XP		Soft Font (110 fonts)	Driver:	TWAIN
		Windows Server 2003		*A4 Crosswise		*A4 Crosswise
Interface:	Standard: Ethernet (10BASE-T, 100BASE-TX)					
	Optional: IEEE1284 (Compatible: Nibble/ECP)					
	*Shared with the C350.					
<b>Print</b>			<b>Scanning Function Specifications</b>		<b>Internet Fax Specifications</b>	
Speed:	Colour: 22 pages/min*		Type:	Full Colour Scanner	Internet Protocol:	TCP/IP, SMTP/POP3
	B / W : 35 pages/min*		Original Size:	Max: 431 x 297mm (17" x 11-3/4")	Transmission mode:	Simple Mode
			Resolution:	200dpi x 200dpi, 300dpi x 300dpi, 400dpi x 400dpi, 600dpi x 600dpi	Document Size:	Max: A3 (Ledger)
Resolution:	600dpi x 1800dpi equivalent			35 pages/min*	E-mail Format:	MIME
Network Protocol:	TCP/IP, IPX/SPX, SMB (Net BEUI), LPD, IPP, SNMP, HTTP		Speed:	Ethernet (10BASE-T, 100BASE-TX)	Data Format:	Send: TIFF-S Receive: TIFF-F
			Interface:		Data Compression Mode:	MH
					Scan Resolution:	200dpi x 200dpi

## Optional Controller (Fiery X3e 22C-KM) Specifications

<b>General</b>					
Type:	Embedded	Printer Languages:	PCL5c, PCL6, PostScript 3	Protocol:	TCP/IP, SMTP/POP3, FTP, LDAP, HTTP, IMAP
CPU:	Intel Mobile Pentium III 700MHz	Fonts:	PCL Font (80 fonts)	Operating System:	Windows 98/Me, Windows NT4.0/2000/XP
Memory:	Standard: 128MB (MAX: 256MB)		Bitmap Font (1 font)		Windows Server 2003
Operating System:	Windows 98/Me, Windows NT4.0/2000/XP		PostScript Font (136 fonts)	Data Format:	TIFF (MMR), PDF (MMR, JPEG), JPEG
	Windows Server 2003, Mac OS 9/OS X		*A4 Crosswise	Driver:	TWAIN
Interface:	Ethernet (10BASE-T, 100BASE-TX)	<b>Scanning Function Specifications</b>			*A4 Crosswise
	IEEE1284 (Compatible: Nibble/ECP)	Type:	Full Colour Scanner	<b>Internet Fax Specifications</b>	
<b>Print</b>		Original Size:	Max: 431 x 297mm (17" x 11-3/4")	Internet Protocol:	TCP/IP, SMTP/POP3
Speed:	Colour: 22 pages/min*	Resolution:	200dpi x 200dpi, 300dpi x 300dpi,	Transmission mode:	Simple Mode
	B / W : 35 pages/min*		400dpi x 400dpi, 600dpi x 600dpi	Document Size:	Max: A3 (Ledger)
Resolution:	600dpi x 1800dpi equivalent	Speed:	35 pages/min*	E-mail Format:	MIME
Network Protocol:	TCP/IP, IPX/SPX, SMB (Net BEUI), LPD	Interface:	Ethernet (10BASE-T, 100BASE-TX), IEEE1284	Data Format:	Send: TIFF-S Receive: TIFF-F
	EtherTalk, IPP, SNMP, HTTP		(Compatible: Nibble/ECP)	Data Compression Mode:	MH
				Scan Resolution:	200dpi x 200dpi

## System Option



## Product appearance, configuration and/or specifications are subject to change without notice.

bizhub and PageScope are registered trademarks or trademarks of **KONICA MINOLTA BUSINESS TECHNOLOGIES, INC.**  
Windows is a registered trademark or trademark of Microsoft Corporation.  
Adobe and PostScript are registered trademarks or trademarks of Adobe Systems Incorporated. All other brand and product names are registered trademarks or trademarks of their respective owners.  
\* As an ENERGY STAR Partner, **KONICA MINOLTA BUSINESS TECHNOLOGIES, INC.** has determined that this product meets the ENERGY STAR guidelines for energy efficiency.  
\* ENERGY STAR is a U.S. registered mark.

## Konica Minolta copiers and multi-functional peripherals are designed with the environment in mind.



- Meets ENERGY STAR Guidelines
- The Use of Recycled Materials
- Toner Recycle Mechanism
- Production at ISO-Certified Factories

## Requirements for safe use

- Please read and follow the instruction manual to ensure safe operation.
- Only operate using appropriate power supply and voltage.
- Connecting the earth wire to an inappropriate place may cause explosion or electric shock. Please connect accordingly (Taiwan and the Philippines only).

## KONICA MINOLTA BUSINESS TECHNOLOGIES, INC.

1-6-1 Marunouchi Chiyoda-ku, Tokyo, Japan  
<http://www.biz.konicaminolta.com>



This catalogue was printed using recycled paper and soy ink.