

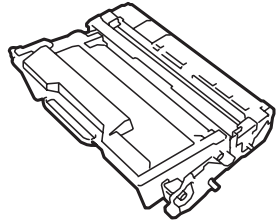
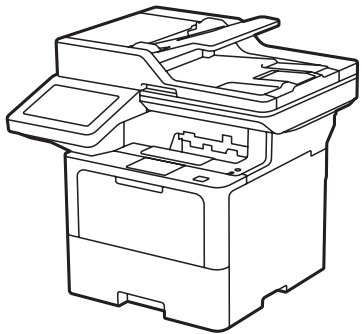
Setup Guide bizhub 5021i bizhub 4221i



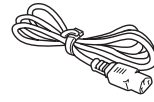
9961503100

Read the *Safety Information* first, then read this *Setup Guide* for the correct installation procedure.

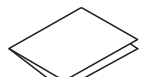
Unpack the machine and check the components



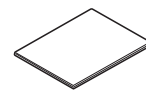
Toner Cartridge and Imaging Unit Assembly
(Installed in the machine)



AC Power Cord



Installation

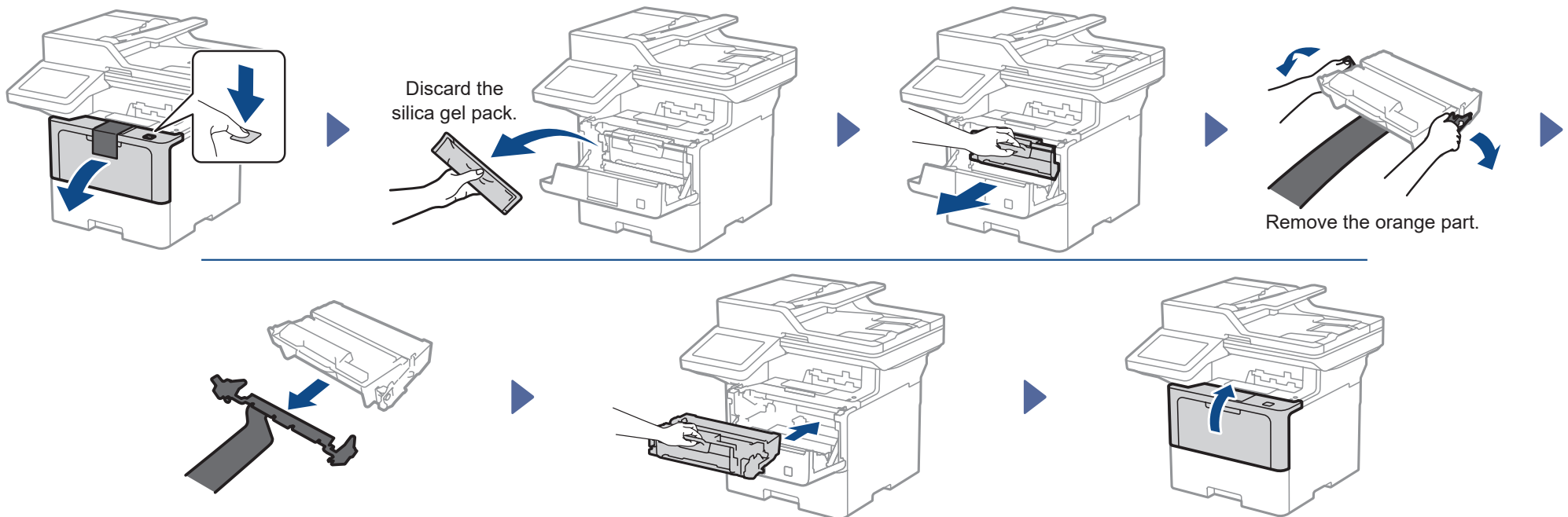


Safety Information

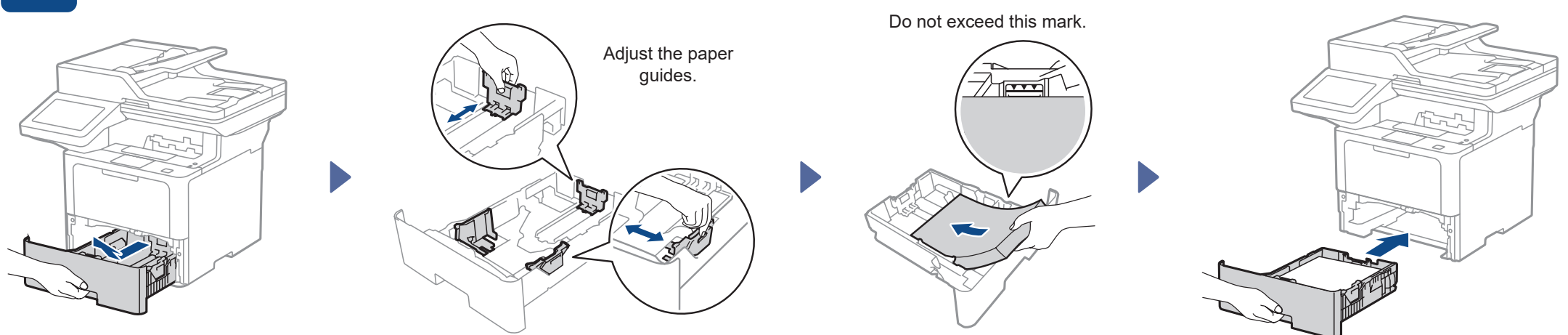
NOTE:

- The components included in the box may differ depending on your country.
- The available connection interfaces vary depending on the model. You must purchase the correct interface cable if you require one.
 - **USB cable**
We recommend using a USB 2.0 cable (Type A/B) that is no more than 2 metres long.
 - **Network cable**
Use a straight-through Category 5 (or greater) twisted-pair cable.
- The screens and images in this *Installation* show the bizhub 5021i.

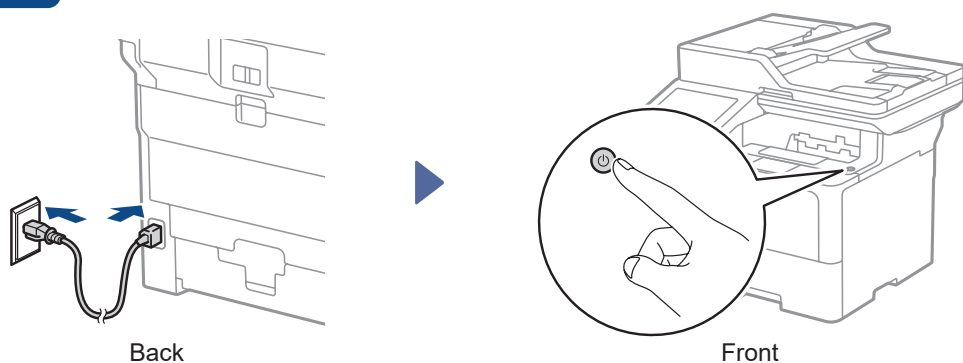
1 Remove the packing materials and re-install the toner cartridge and imaging unit assembly



2 Load paper in the paper tray



3 Connect the power cord and turn the machine on



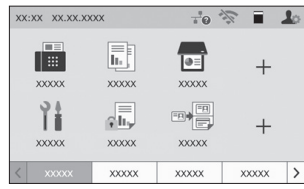
4 Select your country/language (Initial setup only)

After turning the machine on, you may be required to set your country or language (depending on your machine).
If required, follow the on-screen instructions.



5 Select your language (if needed)

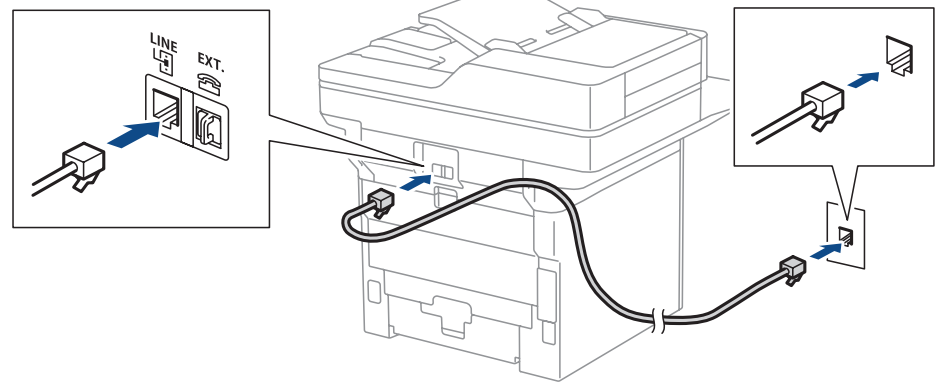
1. On the machine's touchscreen, press [Settings]* > [All Settings] > [Initial Setup] > [Local Language].
2. Press your language.
3. Press .



* If your machine displays the [All Settings] menu on the Home screen, start from [All Settings].

6 Connect the telephone line cord

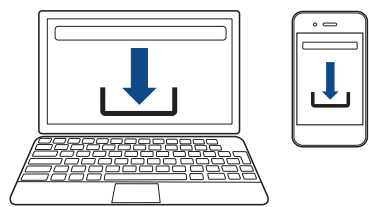
If you do not plan to use the fax feature on this machine, go to step **7**.



7 Connect your computer or mobile device to your machine

Follow these steps to complete the setup using one of the connection types available on your machine.

To install the printer driver, visit the Konica Minolta web site in your region, or contact your supplier to download and install the software.



Follow the on-screen instructions and prompts.

Setup Finished

You can now print and scan using your machine.

Important Notice for Network Security:

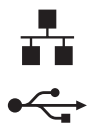
The default password to manage this machine's settings is located on the back of the machine and marked "Pwd". We recommend immediately changing the default password to protect your machine from unauthorized access.

Can't Connect? Check the following:



Wireless network

Restart your wireless access point/router (if possible).



Wired network
USB connection

Disconnect the cable.

Restart your machine and computer, and then go to **7**.

If still not successful, go to **8**.

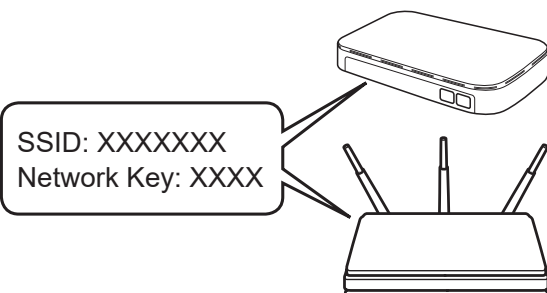
If still not successful, contact customer support.

8 Manual wireless setup (if needed)

If the wireless setup is not successful, try to set up the connection manually.

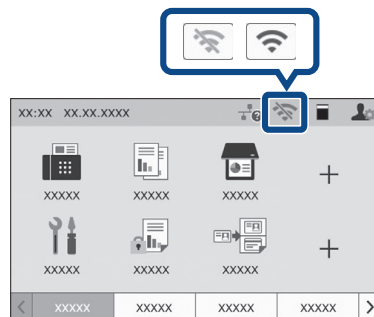
Find your SSID (Network Name) and Network Key (Password) on your wireless access point/router and write them in the table provided below.

| | |
|------------------------|--|
| SSID (Network Name) | |
| Network Key (Password) | |



If you cannot find this information, ask your network administrator or wireless access point/router manufacturer.

Press > [Find Wi-Fi Network].
Follow the LCD instructions.



Select the SSID (Network Name) for your access point/router and enter the Network Key (Password).

When the wireless setup is successful, the touchscreen displays [Connected].

Go to **7** to install software.

If setup is not successful, restart your machine and your wireless access point/router, and repeat **8**.
If still not successful, contact customer support.