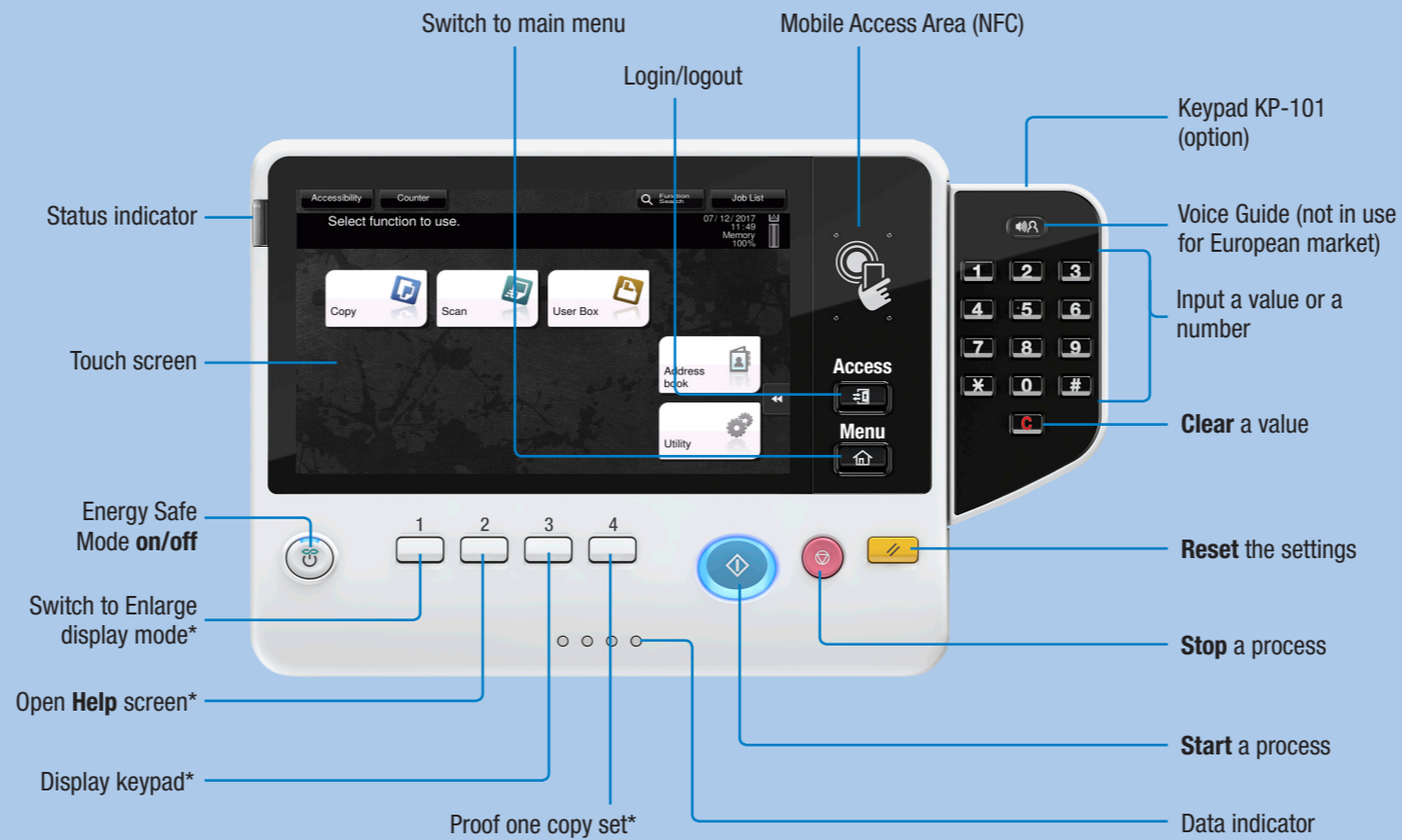


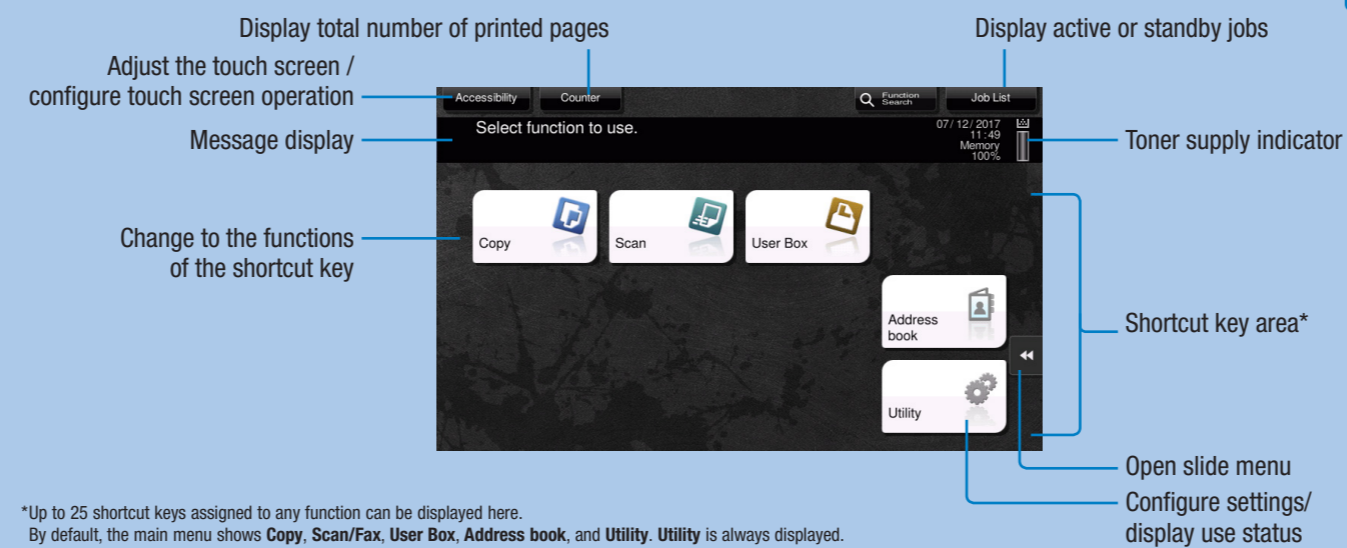


How to use the system – Panel



*This is a Register key. In the Administrator Settings it can be assigned to any function.

Touch screen – Main menu



*Up to 25 shortcut keys assigned to any function can be displayed here. By default, the main menu shows Copy, Scan/Fax, User Box, Address book, and Utility. Utility is always displayed.

Operating the touch screen*

- Tap** to select or determine a menu.
- Double-tap** to retrieve detailed information or enlarge a thumbnail image.
- Drag** to move a display position on an application or preview screen.
- Flick** to scroll an address or job list and feed thumbnail-view pages.
- Long-tap** to display the icon related to the document.
- Drag & Drop** to move a document to the intended place.
- Pan** to move a displayed image.
- Pinch-in/Pinch-out** to enlarge or reduce a preview image.
- Rotate** two fingers to rotate a preview image.

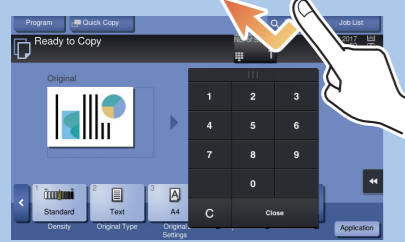
*Available touch functions vary depending on displayed screen.



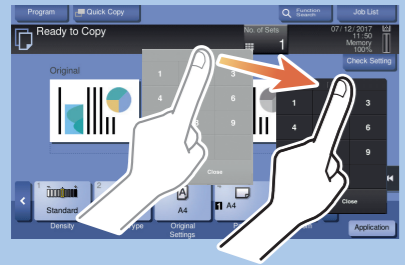


Operation of keypad*

1. Tap the numerals or the input area on the screen to display the keypad.



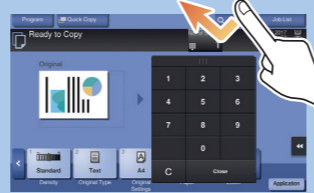
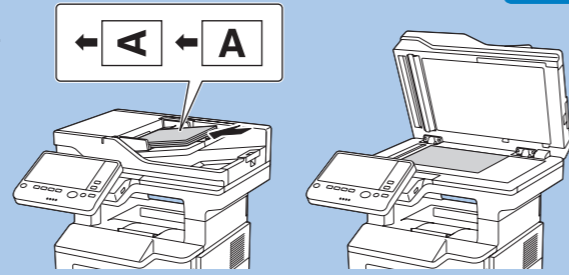
2. If necessary, touch the upper side of the keypad and drag it to another display position.



*If the system is equipped with the optional hardware keypad KP-101, it can be used instead.

Basic copy functions – Make a copy

1. Position the original(s).
2. Tap **Copy** in the main menu.
3. Tap the input area to display the keypad.
4. Type in the number of copies.
5. Press the **Start** key.



Copy operations – Basic copy screen

Labels and descriptions for the 'Ready to Copy' screen:

- Register a copy program
- Display Quick Copy screen
- Number of copy sets
- Display job list
- Check copy settings
- Input/output image (only visible when originals are placed on platen glass or document feeder)
- Adjust the copy density
- Specify the type of the original
- Select the size of the original
- Select paper size and type of the original/change size and type of the paper loaded in paper trays
- Specify additional copy settings
- Specify a zoom ratio

*Available functions depend on system configuration.

Zoom

1. Position the original(s).
2. Tap > in the copy screen.
3. Tap **Zoom**.
4. Make the desired settings.
5. Tap **OK**.
6. Press the **Start** key.

Labels and descriptions for the 'Zoom' settings screen:

- Automatically reduce/enlarge original size to paper size
- Change zoom manually
- Different values for X and Y (distortion)
- Copy the entire original including its edges by slightly reducing the original size
- User defined zoom (values can be changed)
- Change user defined zoom values
- Preset zoom values

Duplex/Combine

1. Position the original(s).
2. Tap > in the copy screen.
3. Tap **Duplex/Combine**.
4. Make the desired settings.
5. Tap **OK**.
6. Press the **Start** key.

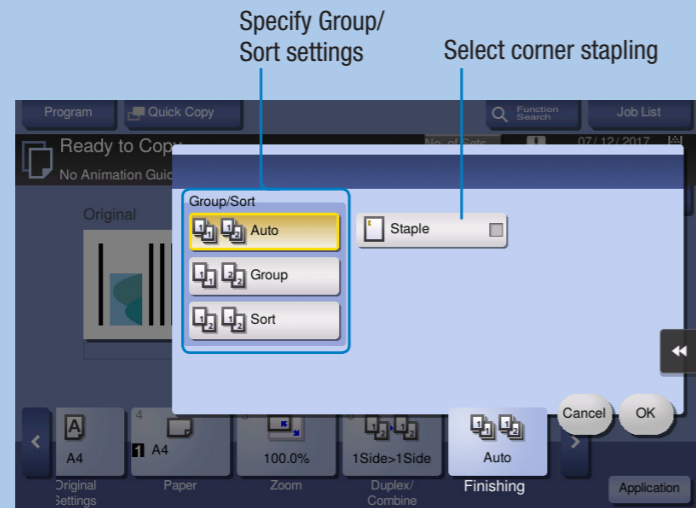
Labels and descriptions for the 'Duplex/Combine' settings screen:

- Copy 2 - 8 document pages onto one page
- Select 1-sided or 2-sided copying
- Select orientation of the original loaded into ADF or placed on the original glass
- Specify binding positions for the original and the copies



Finishing

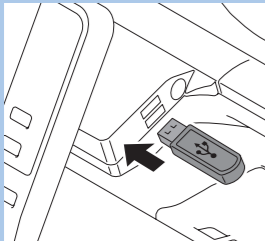
1. Position the original(s).
2. Tap > in the copy screen.
3. Tap **Finishing**.
4. Make the desired setting(s)*.
5. Tap **OK**.
6. Press the **Start** key.



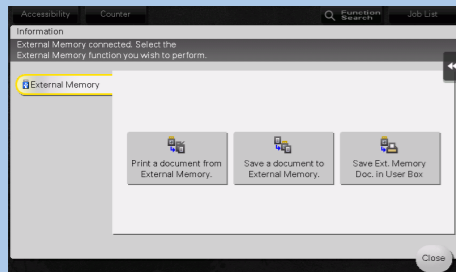
*Available functions depend on system configuration.

Scan to USB memory – (Direct input)

1. Plug the USB memory device into the USB port.



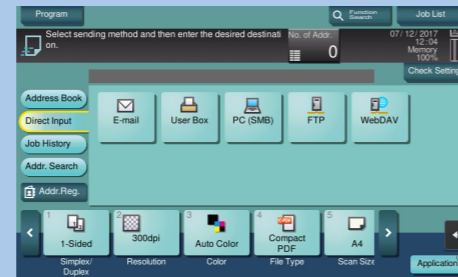
2. Position the original(s).
3. Tap **Save a document to External Memory**.



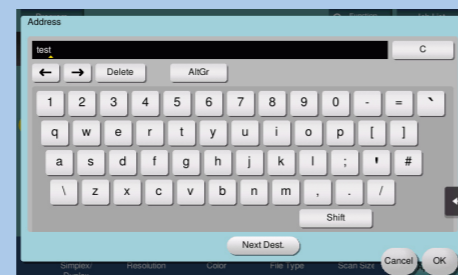
4. Make the desired setting(s).
5. Press the **Start** key.

Scan to e-mail (Direct input)

1. Position the original(s).
2. Tap **Scan/Fax** in the main menu.
3. Tap **Direct Input**.

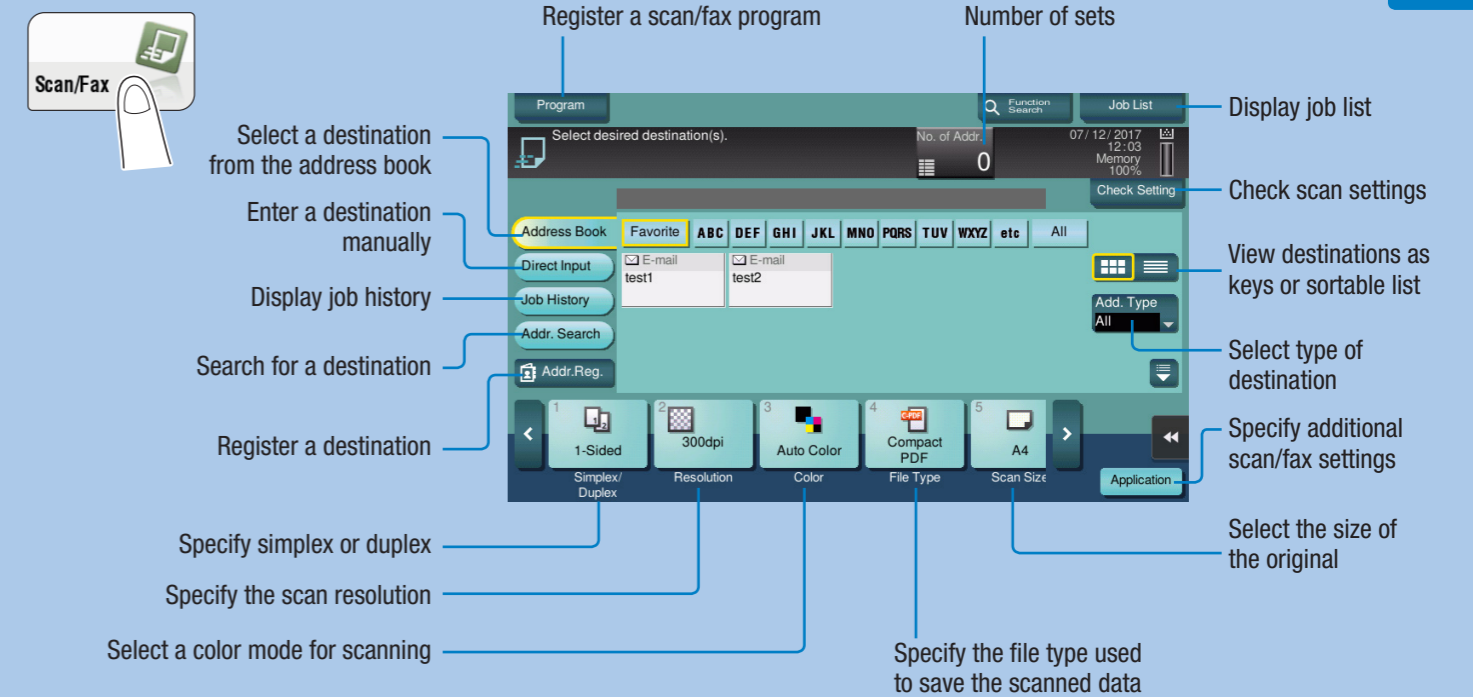


4. Tap **E-mail**.



5. Enter the destination address.
6. Tap **OK**.
7. Press the **Start** key.

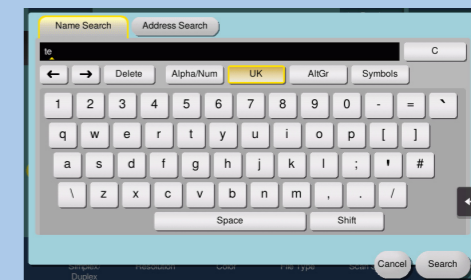
Scan operations – Scan/Fax screen*



*Available functions depend on system configuration.

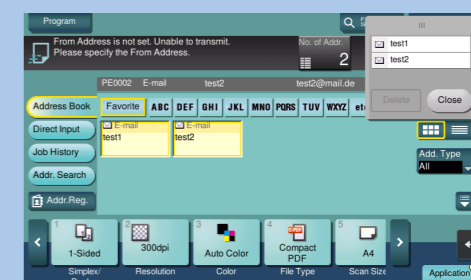
Search for a destination

1. Tap **Scan/Fax** in the main menu.
The destinations categorized into **Favorite** are displayed.
2. Tap **Addr. Search**.
3. Tap **Name Search** or **Address search**.
4. Enter the search text and tap **Search**.
5. Select the destination from the search result.
6. Press the **Start** key.



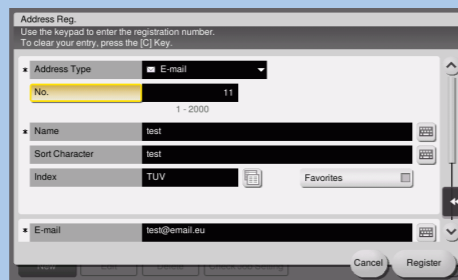
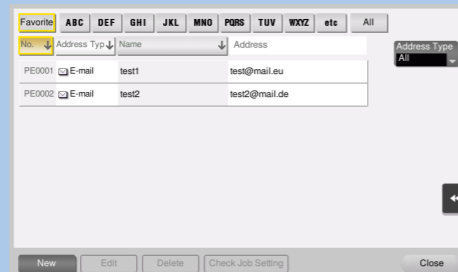
Sending data to multiple destinations

1. Position the original(s).
2. Tap **Scan/Fax** in the main menu.
The destinations categorized into **Favorite** are displayed.
3. Tap **Add. Type**.
4. Select the desired type of destination.
5. Specify two or more destinations.
6. Press the **Start** key.



Register a destination

1. Tap **Address book** in the main menu.
2. Tap **New**.
3. Select the type of destination you want to register.
4. Enter the destination information and tap **Register**.



Box operations – User Box screen



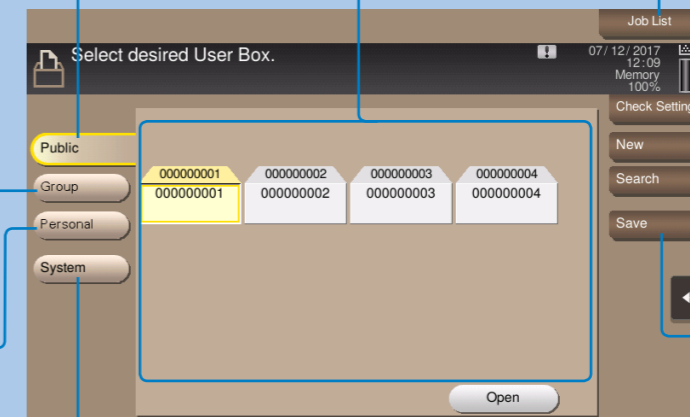
Display **Public** user boxes
(documents can be stored here by all users)

Registered user boxes

Display job list

Display **Group** user boxes
(only users belonging to the same group can store and use documents)*

Display **Personal** user boxes
(Only accessible by a personal user logged in to the system)*



Check scan settings

Create a user box

Search for a user box

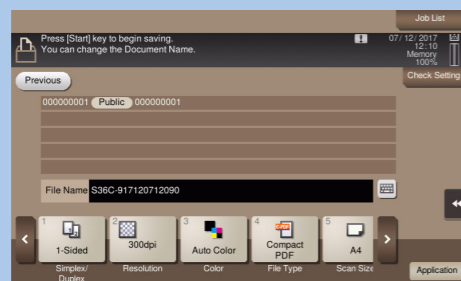
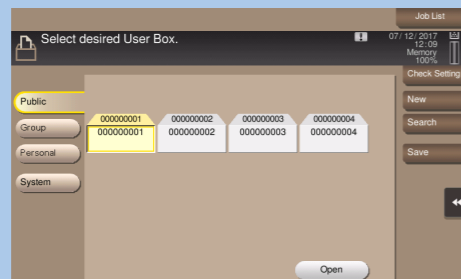
Save file in a user box

Display **System** boxes
(used by the system to temporarily store files)

*Only available if user authentication is enabled. Not displayed when an unauthorized user has logged in.

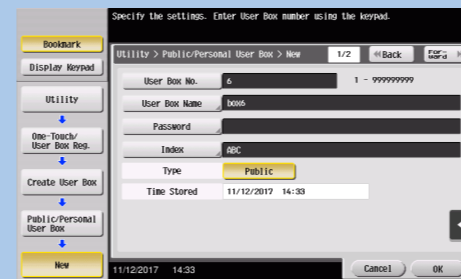
Save file in a public user box

1. Position the original(s).
2. Tap **User Box** in the main menu.
3. Tap **Public**.
4. Select the desired user box and tap **Save**.
5. Set the file save options and scan settings if necessary.
6. Press the **Start** key. The file is saved.



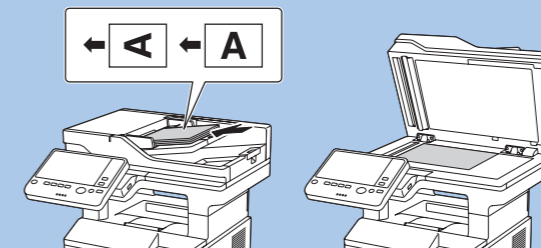
Create a user box

1. Tap **Utility** in the main menu.
2. Tap **One-Touch/User Box Registration**.
3. Tap **Create User Box**.
4. Tap **Public/Personal User Box**.
5. Tap **New**.
6. Enter the registration information and tap **OK**.



Fax operations - Send a fax*

1. Position the original(s).



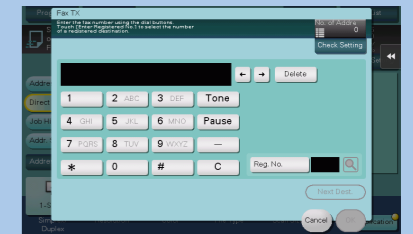
2. Tap **Scan/Fax** in the main menu.



3. Press the keypad button.



4. Type in the fax number.



5. Press the **Start** key.



* only with fax option