



Online Manual

Media Configuration Tool Guide

Contents

Using This Online Manual.	3
Trademarks and Licenses.	4
Search Tips.	13
General Notes (Media Configuration Tool).	15
The Features of Media Configuration Tool.	16
Starting Media Configuration Tool.	17
Main Screen.	23
Changing the Base Printer.	27
Updating Media Information.	29
Exporting Media Information and Importing to Another Printer.	34
Exporting Media Information.	35
Importing Media Information.	38
Copying Media Information from the Base Printer to Another Printer.	43
Editing Media Information.	50
Displaying Media Information Details.	51
Changing the Display Order of Media Information.	53
Changing Media Names.	55
Switching Media Information to Show/Hide.	57
Deleting Media Information.	60
Using Custom Paper.	62
Adding Custom Paper.	63
Editing Custom Paper.	71
Notes on the Use of Custom Paper.	78
Edit Custom Paper Dialog Box.	80

Using This Online Manual

- [Symbols Used in This Document](#)
- [Touch-enabled Device Users \(Windows\)](#)

Symbols Used in This Document

Warning

Instructions that, if ignored, could result in death or serious personal injury caused by incorrect operation of the equipment. These must be observed for safe operation.

Caution

Instructions that, if ignored, could result in personal injury or material damage caused by incorrect operation of the equipment. These must be observed for safe operation.

Important

Instructions including important information. To avoid damage and injury or improper use of the product, be sure to read these indications.

Note

Instructions including notes for operation and additional explanations.

Basics

Instructions explaining basic operations of your product.

Note

- Icons may vary depending on your product.

Touch-enabled Device Users (Windows)

For touch actions, you need to replace "right-click" in this document with the action set on the operating system. For example, if the action is set to "press and hold" on your operating system, replace "right-click" with "press and hold."

Trademarks and Licenses

- Microsoft is a registered trademark of Microsoft Corporation.
- Windows is a trademark or registered trademark of Microsoft Corporation in the U.S. and/or other countries.
- Windows Vista is a trademark or registered trademark of Microsoft Corporation in the U.S. and/or other countries.
- Internet Explorer is a trademark or registered trademark of Microsoft Corporation in the U.S. and/or other countries.
- Mac, Mac OS, AirPort, Safari, Bonjour, iPad, iPhone and iPod touch are trademarks of Apple Inc., registered in the U.S. and other countries. App Store, AirPrint and the AirPrint logo are trademarks of Apple Inc.
- IOS is a trademark or registered trademark of Cisco in the U.S. and other countries and is used under license.
- Google Cloud Print, Google Chrome, Chrome OS, Chromebook, Android, Google Play, Google Drive, Google Apps and Picasa are either registered trademarks or trademarks of Google Inc.
- Adobe, Flash, Photoshop, Photoshop Elements, Lightroom, Adobe RGB and Adobe RGB (1998) are either registered trademarks or trademarks of Adobe Systems Incorporated in the United States and/or other countries.
- Bluetooth is a trademark of Bluetooth SIG, Inc., U.S.A. and licensed to Canon Inc.
- Autodesk and AutoCAD are registered trademarks or trademarks of Autodesk, Inc., and/or its subsidiaries and/or affiliates in the USA and/or other countries.

»» Note

- The formal name of Windows Vista is Microsoft Windows Vista operating system.

Copyright (c) 2003-2004, Apple Computer, Inc. All rights reserved.

Redistribution and use in source and binary forms, with or without modification, are permitted provided that the following conditions are met:

1. Redistributions of source code must retain the above copyright notice, this list of conditions and the following disclaimer.
2. Redistributions in binary form must reproduce the above copyright notice, this list of conditions and the following disclaimer in the documentation and/or other materials provided with the distribution.
3. Neither the name of Apple Computer, Inc. ("Apple") nor the names of its contributors may be used to endorse or promote products derived from this software without specific prior written permission.

THIS SOFTWARE IS PROVIDED BY APPLE AND ITS CONTRIBUTORS "AS IS" AND ANY EXPRESS OR IMPLIED WARRANTIES, INCLUDING, BUT NOT LIMITED TO, THE IMPLIED WARRANTIES OF MERCHANTABILITY AND FITNESS FOR A PARTICULAR PURPOSE ARE DISCLAIMED. IN NO EVENT SHALL APPLE OR ITS CONTRIBUTORS BE LIABLE FOR ANY DIRECT, INDIRECT, INCIDENTAL, SPECIAL, EXEMPLARY, OR CONSEQUENTIAL DAMAGES (INCLUDING, BUT NOT LIMITED TO, PROCUREMENT OF SUBSTITUTE GOODS OR SERVICES; LOSS OF USE, DATA, OR PROFITS; OR BUSINESS INTERRUPTION) HOWEVER CAUSED AND ON ANY THEORY OF LIABILITY, WHETHER IN CONTRACT, STRICT LIABILITY, OR TORT INCLUDING NEGLIGENCE OR OTHERWISE) ARISING IN ANY WAY OUT OF THE USE OF THIS SOFTWARE, EVEN IF ADVISED OF THE POSSIBILITY OF SUCH DAMAGE.

TERMS AND CONDITIONS FOR USE, REPRODUCTION, AND DISTRIBUTION

1. Definitions.

"License" shall mean the terms and conditions for use, reproduction, and distribution as defined by Sections 1 through 9 of this document.

"Licensor" shall mean the copyright owner or entity authorized by the copyright owner that is granting the License.

"Legal Entity" shall mean the union of the acting entity and all other entities that control, are controlled by, or are under common control with that entity. For the purposes of this definition, "control" means (i) the power, direct or indirect, to cause the direction or management of such entity, whether by contract or otherwise, or (ii) ownership of fifty percent (50%) or more of the outstanding shares, or (iii) beneficial ownership of such entity.

"You" (or "Your") shall mean an individual or Legal Entity exercising permissions granted by this License.

"Source" form shall mean the preferred form for making modifications, including but not limited to software source code, documentation source, and configuration files.

"Object" form shall mean any form resulting from mechanical transformation or translation of a Source form, including but not limited to compiled object code, generated documentation, and conversions to other media types.

"Work" shall mean the work of authorship, whether in Source or Object form, made available under the License, as indicated by a copyright notice that is included in or attached to the work (an example is provided in the Appendix below).

"Derivative Works" shall mean any work, whether in Source or Object form, that is based on (or derived from) the Work and for which the editorial revisions, annotations, elaborations, or other modifications represent, as a whole, an original work of authorship. For the purposes of this License, Derivative Works shall not include works that remain separable from, or merely link (or bind by name) to the interfaces of, the Work and Derivative Works thereof.

"Contribution" shall mean any work of authorship, including the original version of the Work and any modifications or additions to that Work or Derivative Works thereof, that is intentionally submitted to Licensor for inclusion in the Work by the copyright owner or by an individual or Legal Entity authorized to submit on behalf of the copyright owner. For the purposes of this definition, "submitted" means any form of electronic, verbal, or written communication sent to the Licensor or its representatives, including but not limited to communication on electronic mailing lists, source code control systems, and issue tracking systems that are managed by, or on behalf of, the Licensor for the purpose of discussing and improving the Work, but excluding communication that is conspicuously marked or otherwise designated in writing by the copyright owner as "Not a Contribution."

"Contributor" shall mean Licensor and any individual or Legal Entity on behalf of whom a Contribution has been received by Licensor and subsequently incorporated within the Work.

2. Grant of Copyright License. Subject to the terms and conditions of this License, each Contributor hereby grants to You a perpetual, worldwide, non-exclusive, no-charge, royalty-free, irrevocable

copyright license to reproduce, prepare Derivative Works of, publicly display, publicly perform, sublicense, and distribute the Work and such Derivative Works in Source or Object form.

3. Grant of Patent License. Subject to the terms and conditions of this License, each Contributor hereby grants to You a perpetual, worldwide, non-exclusive, no-charge, royalty-free, irrevocable (except as stated in this section) patent license to make, have made, use, offer to sell, sell, import, and otherwise transfer the Work, where such license applies only to those patent claims licensable by such Contributor that are necessarily infringed by their Contribution(s) alone or by combination of their Contribution(s) with the Work to which such Contribution(s) was submitted. If You institute patent litigation against any entity (including a cross-claim or counterclaim in a lawsuit) alleging that the Work or a Contribution incorporated within the Work constitutes direct or contributory patent infringement, then any patent licenses granted to You under this License for that Work shall terminate as of the date such litigation is filed.
4. Redistribution. You may reproduce and distribute copies of the Work or Derivative Works thereof in any medium, with or without modifications, and in Source or Object form, provided that You meet the following conditions:
 1. You must give any other recipients of the Work or Derivative Works a copy of this License; and
 2. You must cause any modified files to carry prominent notices stating that You changed the files; and
 3. You must retain, in the Source form of any Derivative Works that You distribute, all copyright, patent, trademark, and attribution notices from the Source form of the Work, excluding those notices that do not pertain to any part of the Derivative Works; and
 4. If the Work includes a "NOTICE" text file as part of its distribution, then any Derivative Works that You distribute must include a readable copy of the attribution notices contained within such NOTICE file, excluding those notices that do not pertain to any part of the Derivative Works, in at least one of the following places: within a NOTICE text file distributed as part of the Derivative Works; within the Source form or documentation, if provided along with the Derivative Works; or, within a display generated by the Derivative Works, if and wherever such third-party notices normally appear. The contents of the NOTICE file are for informational purposes only and do not modify the License. You may add Your own attribution notices within Derivative Works that You distribute, alongside or as an addendum to the NOTICE text from the Work, provided that such additional attribution notices cannot be construed as modifying the License.

You may add Your own copyright statement to Your modifications and may provide additional or different license terms and conditions for use, reproduction, or distribution of Your modifications, or for any such Derivative Works as a whole, provided Your use, reproduction, and distribution of the Work otherwise complies with the conditions stated in this License.

5. Submission of Contributions. Unless You explicitly state otherwise, any Contribution intentionally submitted for inclusion in the Work by You to the Licensor shall be under the terms and conditions of this License, without any additional terms or conditions. Notwithstanding the above, nothing herein shall supersede or modify the terms of any separate license agreement you may have executed with Licensor regarding such Contributions.
6. Trademarks. This License does not grant permission to use the trade names, trademarks, service marks, or product names of the Licensor, except as required for reasonable and customary use in describing the origin of the Work and reproducing the content of the NOTICE file.
7. Disclaimer of Warranty. Unless required by applicable law or agreed to in writing, Licensor provides the Work (and each Contributor provides its Contributions) on an "AS IS" BASIS, WITHOUT WARRANTIES OR CONDITIONS OF ANY KIND, either express or implied, including, without

limitation, any warranties or conditions of TITLE, NON-INFRINGEMENT, MERCHANTABILITY, or FITNESS FOR A PARTICULAR PURPOSE. You are solely responsible for determining the appropriateness of using or redistributing the Work and assume any risks associated with Your exercise of permissions under this License.

8. Limitation of Liability. In no event and under no legal theory, whether in tort (including negligence), contract, or otherwise, unless required by applicable law (such as deliberate and grossly negligent acts) or agreed to in writing, shall any Contributor be liable to You for damages, including any direct, indirect, special, incidental, or consequential damages of any character arising as a result of this License or out of the use or inability to use the Work (including but not limited to damages for loss of goodwill, work stoppage, computer failure or malfunction, or any and all other commercial damages or losses), even if such Contributor has been advised of the possibility of such damages.
9. Accepting Warranty or Additional Liability. While redistributing the Work or Derivative Works thereof, You may choose to offer, and charge a fee for, acceptance of support, warranty, indemnity, or other liability obligations and/or rights consistent with this License. However, in accepting such obligations, You may act only on Your own behalf and on Your sole responsibility, not on behalf of any other Contributor, and only if You agree to indemnify, defend, and hold each Contributor harmless for any liability incurred by, or claims asserted against, such Contributor by reason of your accepting any such warranty or additional liability.

END OF TERMS AND CONDITIONS

---- Part 1: CMU/UCD copyright notice: (BSD like) ----

Copyright 1989, 1991, 1992 by Carnegie Mellon University

Derivative Work - 1996, 1998-2000

Copyright 1996, 1998-2000 The Regents of the University of California

All Rights Reserved

Permission to use, copy, modify and distribute this software and its documentation for any purpose and without fee is hereby granted, provided that the above copyright notice appears in all copies and that both that copyright notice and this permission notice appear in supporting documentation, and that the name of CMU and The Regents of the University of California not be used in advertising or publicity pertaining to distribution of the software without specific written permission.

CMU AND THE REGENTS OF THE UNIVERSITY OF CALIFORNIA DISCLAIM ALL WARRANTIES WITH REGARD TO THIS SOFTWARE, INCLUDING ALL IMPLIED WARRANTIES OF MERCHANTABILITY AND FITNESS. IN NO EVENT SHALL CMU OR THE REGENTS OF THE UNIVERSITY OF CALIFORNIA BE LIABLE FOR ANY SPECIAL, INDIRECT OR CONSEQUENTIAL DAMAGES OR ANY DAMAGES WHATSOEVER RESULTING FROM THE LOSS OF USE, DATA OR PROFITS, WHETHER IN AN ACTION OF CONTRACT, NEGLIGENCE OR OTHER TORTIOUS ACTION, ARISING OUT OF OR IN CONNECTION WITH THE USE OR PERFORMANCE OF THIS SOFTWARE.

---- Part 2: Networks Associates Technology, Inc copyright notice (BSD) ----

Copyright (c) 2001-2003, Networks Associates Technology, Inc

All rights reserved.

Redistribution and use in source and binary forms, with or without modification, are permitted provided that the following conditions are met:

* Redistributions of source code must retain the above copyright notice, this list of conditions and the following disclaimer.

* Redistributions in binary form must reproduce the above copyright notice, this list of conditions and the following disclaimer in the documentation and/or other materials provided with the distribution.

* Neither the name of the Networks Associates Technology, Inc nor the names of its contributors may be used to endorse or promote products derived from this software without specific prior written permission.

THIS SOFTWARE IS PROVIDED BY THE COPYRIGHT HOLDERS AND CONTRIBUTORS ``AS IS" AND ANY EXPRESS OR IMPLIED WARRANTIES, INCLUDING, BUT NOT LIMITED TO, THE IMPLIED WARRANTIES OF MERCHANTABILITY AND FITNESS FOR A PARTICULAR PURPOSE ARE DISCLAIMED. IN NO EVENT SHALL THE COPYRIGHT HOLDERS OR CONTRIBUTORS BE LIABLE FOR ANY DIRECT, INDIRECT, INCIDENTAL, SPECIAL, EXEMPLARY, OR CONSEQUENTIAL DAMAGES (INCLUDING, BUT NOT LIMITED TO, PROCUREMENT OF SUBSTITUTE GOODS OR SERVICES; LOSS OF USE, DATA, OR PROFITS; OR BUSINESS INTERRUPTION) HOWEVER CAUSED AND ON ANY THEORY OF LIABILITY, WHETHER IN CONTRACT, STRICT LIABILITY, OR TORT (INCLUDING NEGLIGENCE OR OTHERWISE) ARISING IN ANY WAY OUT OF THE USE OF THIS SOFTWARE, EVEN IF ADVISED OF THE POSSIBILITY OF SUCH DAMAGE.

---- Part 3: Cambridge Broadband Ltd. copyright notice (BSD) -----

Portions of this code are copyright (c) 2001-2003, Cambridge Broadband Ltd.

All rights reserved.

Redistribution and use in source and binary forms, with or without modification, are permitted provided that the following conditions are met:

* Redistributions of source code must retain the above copyright notice, this list of conditions and the following disclaimer.

* Redistributions in binary form must reproduce the above copyright notice, this list of conditions and the following disclaimer in the documentation and/or other materials provided with the distribution.

* The name of Cambridge Broadband Ltd. may not be used to endorse or promote products derived from this software without specific prior written permission.

THIS SOFTWARE IS PROVIDED BY THE COPYRIGHT HOLDER ``AS IS" AND ANY EXPRESS OR IMPLIED WARRANTIES, INCLUDING, BUT NOT LIMITED TO, THE IMPLIED WARRANTIES OF MERCHANTABILITY AND FITNESS FOR A PARTICULAR PURPOSE ARE DISCLAIMED. IN NO EVENT SHALL THE COPYRIGHT HOLDER BE LIABLE FOR ANY DIRECT, INDIRECT, INCIDENTAL, SPECIAL, EXEMPLARY, OR CONSEQUENTIAL DAMAGES (INCLUDING, BUT NOT LIMITED TO, PROCUREMENT OF SUBSTITUTE GOODS OR SERVICES; LOSS OF USE, DATA, OR PROFITS; OR BUSINESS INTERRUPTION) HOWEVER CAUSED AND ON ANY THEORY OF LIABILITY, WHETHER IN CONTRACT, STRICT LIABILITY, OR TORT (INCLUDING NEGLIGENCE OR OTHERWISE) ARISING IN ANY WAY OUT OF THE USE OF THIS SOFTWARE, EVEN IF ADVISED OF THE POSSIBILITY OF SUCH DAMAGE.

---- Part 4: Sun Microsystems, Inc. copyright notice (BSD) -----

Copyright c 2003 Sun Microsystems, Inc., 4150 Network Circle, Santa Clara, California 95054, U.S.A. All rights reserved.

Use is subject to license terms below.

This distribution may include materials developed by third parties.

Sun, Sun Microsystems, the Sun logo and Solaris are trademarks or registered trademarks of Sun Microsystems, Inc. in the U.S. and other countries.

Redistribution and use in source and binary forms, with or without modification, are permitted provided that the following conditions are met:

- * Redistributions of source code must retain the above copyright notice, this list of conditions and the following disclaimer.
- * Redistributions in binary form must reproduce the above copyright notice, this list of conditions and the following disclaimer in the documentation and/or other materials provided with the distribution.
- * Neither the name of the Sun Microsystems, Inc. nor the names of its contributors may be used to endorse or promote products derived from this software without specific prior written permission.

THIS SOFTWARE IS PROVIDED BY THE COPYRIGHT HOLDERS AND CONTRIBUTORS ``AS IS" AND ANY EXPRESS OR IMPLIED WARRANTIES, INCLUDING, BUT NOT LIMITED TO, THE IMPLIED WARRANTIES OF MERCHANTABILITY AND FITNESS FOR A PARTICULAR PURPOSE ARE DISCLAIMED. IN NO EVENT SHALL THE COPYRIGHT HOLDERS OR CONTRIBUTORS BE LIABLE FOR ANY DIRECT, INDIRECT, INCIDENTAL, SPECIAL, EXEMPLARY, OR CONSEQUENTIAL DAMAGES (INCLUDING, BUT NOT LIMITED TO, PROCUREMENT OF SUBSTITUTE GOODS OR SERVICES; LOSS OF USE, DATA, OR PROFITS; OR BUSINESS INTERRUPTION) HOWEVER CAUSED AND ON ANY THEORY OF LIABILITY, WHETHER IN CONTRACT, STRICT LIABILITY, OR TORT (INCLUDING NEGLIGENCE OR OTHERWISE) ARISING IN ANY WAY OUT OF THE USE OF THIS SOFTWARE, EVEN IF ADVISED OF THE POSSIBILITY OF SUCH DAMAGE.

---- Part 5: Sparta, Inc copyright notice (BSD) ----

Copyright (c) 2003-2009, Sparta, Inc

All rights reserved.

Redistribution and use in source and binary forms, with or without modification, are permitted provided that the following conditions are met:

- * Redistributions of source code must retain the above copyright notice, this list of conditions and the following disclaimer.
- * Redistributions in binary form must reproduce the above copyright notice, this list of conditions and the following disclaimer in the documentation and/or other materials provided with the distribution.
- * Neither the name of Sparta, Inc nor the names of its contributors may be used to endorse or promote products derived from this software without specific prior written permission.

THIS SOFTWARE IS PROVIDED BY THE COPYRIGHT HOLDERS AND CONTRIBUTORS ``AS IS" AND ANY EXPRESS OR IMPLIED WARRANTIES, INCLUDING, BUT NOT LIMITED TO, THE IMPLIED WARRANTIES OF MERCHANTABILITY AND FITNESS FOR A PARTICULAR PURPOSE ARE DISCLAIMED. IN NO EVENT SHALL THE COPYRIGHT HOLDERS OR CONTRIBUTORS BE LIABLE FOR ANY DIRECT, INDIRECT, INCIDENTAL, SPECIAL, EXEMPLARY, OR CONSEQUENTIAL DAMAGES (INCLUDING, BUT NOT LIMITED TO, PROCUREMENT OF SUBSTITUTE GOODS OR SERVICES; LOSS OF USE, DATA, OR PROFITS; OR BUSINESS INTERRUPTION) HOWEVER CAUSED AND ON ANY THEORY OF LIABILITY, WHETHER IN CONTRACT, STRICT LIABILITY, OR TORT (INCLUDING NEGLIGENCE OR OTHERWISE) ARISING IN ANY WAY OUT OF THE USE OF THIS SOFTWARE, EVEN IF ADVISED OF THE POSSIBILITY OF SUCH DAMAGE.

---- Part 6: Cisco/BUPTNIC copyright notice (BSD) ----

Copyright (c) 2004, Cisco, Inc and Information Network Center of Beijing University of Posts and Telecommunications.

All rights reserved.

Redistribution and use in source and binary forms, with or without modification, are permitted provided that the following conditions are met:

- * Redistributions of source code must retain the above copyright notice, this list of conditions and the following disclaimer.
- * Redistributions in binary form must reproduce the above copyright notice, this list of conditions and the following disclaimer in the documentation and/or other materials provided with the distribution.
- * Neither the name of Cisco, Inc, Beijing University of Posts and Telecommunications, nor the names of their contributors may be used to endorse or promote products derived from this software without specific prior written permission.

THIS SOFTWARE IS PROVIDED BY THE COPYRIGHT HOLDERS AND CONTRIBUTORS ``AS IS" AND ANY EXPRESS OR IMPLIED WARRANTIES, INCLUDING, BUT NOT LIMITED TO, THE IMPLIED WARRANTIES OF MERCHANTABILITY AND FITNESS FOR A PARTICULAR PURPOSE ARE DISCLAIMED. IN NO EVENT SHALL THE COPYRIGHT HOLDERS OR CONTRIBUTORS BE LIABLE FOR ANY DIRECT, INDIRECT, INCIDENTAL, SPECIAL, EXEMPLARY, OR CONSEQUENTIAL DAMAGES (INCLUDING, BUT NOT LIMITED TO, PROCUREMENT OF SUBSTITUTE GOODS OR SERVICES; LOSS OF USE, DATA, OR PROFITS; OR BUSINESS INTERRUPTION) HOWEVER CAUSED AND ON ANY THEORY OF LIABILITY, WHETHER IN CONTRACT, STRICT LIABILITY, OR TORT (INCLUDING NEGLIGENCE OR OTHERWISE) ARISING IN ANY WAY OUT OF THE USE OF THIS SOFTWARE, EVEN IF ADVISED OF THE POSSIBILITY OF SUCH DAMAGE.

---- Part 7: Fabasoft R&D Software GmbH & Co KG copyright notice (BSD) ----

Copyright (c) Fabasoft R&D Software GmbH & Co KG, 2003 oss@fabasoft.com

Author: Bernhard Penz

Redistribution and use in source and binary forms, with or without modification, are permitted provided that the following conditions are met:

- * Redistributions of source code must retain the above copyright notice, this list of conditions and the following disclaimer.
- * Redistributions in binary form must reproduce the above copyright notice, this list of conditions and the following disclaimer in the documentation and/or other materials provided with the distribution.
- * The name of Fabasoft R&D Software GmbH & Co KG or any of its subsidiaries, brand or product names may not be used to endorse or promote products derived from this software without specific prior written permission.

THIS SOFTWARE IS PROVIDED BY THE COPYRIGHT HOLDER ``AS IS" AND ANY EXPRESS OR IMPLIED WARRANTIES, INCLUDING, BUT NOT LIMITED TO, THE IMPLIED WARRANTIES OF MERCHANTABILITY AND FITNESS FOR A PARTICULAR PURPOSE ARE DISCLAIMED. IN NO EVENT SHALL THE COPYRIGHT HOLDER BE LIABLE FOR ANY DIRECT, INDIRECT, INCIDENTAL, SPECIAL, EXEMPLARY, OR CONSEQUENTIAL DAMAGES (INCLUDING, BUT NOT LIMITED TO, PROCUREMENT OF SUBSTITUTE GOODS OR SERVICES; LOSS OF USE, DATA, OR PROFITS; OR BUSINESS INTERRUPTION) HOWEVER CAUSED AND ON ANY THEORY OF LIABILITY, WHETHER

IN CONTRACT, STRICT LIABILITY, OR TORT (INCLUDING NEGLIGENCE OR OTHERWISE) ARISING IN ANY WAY OUT OF THE USE OF THIS SOFTWARE, EVEN IF ADVISED OF THE POSSIBILITY OF SUCH DAMAGE.

LEADTOOLS

Copyright (C) 1991-2009 LEAD Technologies, Inc.

CMap Resources

Copyright 1990-2009 Adobe Systems Incorporated.

All rights reserved.

Copyright 1990-2010 Adobe Systems Incorporated.

All rights reserved.

Redistribution and use in source and binary forms, with or without modification, are permitted provided that the following conditions are met:

Redistributions of source code must retain the above copyright notice, this list of conditions and the following disclaimer.

Redistributions in binary form must reproduce the above copyright notice, this list of conditions and the following disclaimer in the documentation and/or other materials provided with the distribution.

Neither the name of Adobe Systems Incorporated nor the names of its contributors may be used to endorse or promote products derived from this software without specific prior written permission.

THIS SOFTWARE IS PROVIDED BY THE COPYRIGHT HOLDERS AND CONTRIBUTORS "AS IS" AND ANY EXPRESS OR IMPLIED WARRANTIES, INCLUDING, BUT NOT LIMITED TO, THE IMPLIED WARRANTIES OF MERCHANTABILITY AND FITNESS FOR A PARTICULAR PURPOSE ARE DISCLAIMED. IN NO EVENT SHALL THE COPYRIGHT HOLDER OR CONTRIBUTORS BE LIABLE FOR ANY DIRECT, INDIRECT, INCIDENTAL, SPECIAL, EXEMPLARY, OR CONSEQUENTIAL DAMAGES (INCLUDING, BUT NOT LIMITED TO, PROCUREMENT OF SUBSTITUTE GOODS OR SERVICES; LOSS OF USE, DATA, OR PROFITS; OR BUSINESS INTERRUPTION) HOWEVER CAUSED AND ON ANY THEORY OF LIABILITY, WHETHER IN CONTRACT, STRICT LIABILITY, OR TORT (INCLUDING NEGLIGENCE OR OTHERWISE) ARISING IN ANY WAY OUT OF THE USE OF THIS SOFTWARE, EVEN IF ADVISED OF THE POSSIBILITY OF SUCH DAMAGE.

MIT License

Copyright (c) 1998, 1999, 2000 Thai Open Source Software Center Ltd

Permission is hereby granted, free of charge, to any person obtaining a copy of this software and associated documentation files (the "Software"), to deal in the Software without restriction, including without limitation the rights to use, copy, modify, merge, publish, distribute, sublicense, and/or sell copies of the Software, and to permit persons to whom the Software is furnished to do so, subject to the following conditions:

The above copyright notice and this permission notice shall be included in all copies or substantial portions of the Software.

THE SOFTWARE IS PROVIDED "AS IS", WITHOUT WARRANTY OF ANY KIND, EXPRESS OR IMPLIED, INCLUDING BUT NOT LIMITED TO THE WARRANTIES OF MERCHANTABILITY, FITNESS FOR A PARTICULAR PURPOSE AND NONINFRINGEMENT. IN NO EVENT SHALL THE AUTHORS OR COPYRIGHT HOLDERS BE LIABLE FOR ANY CLAIM, DAMAGES OR OTHER LIABILITY, WHETHER IN AN ACTION OF CONTRACT, TORT OR OTHERWISE, ARISING FROM, OUT OF OR IN CONNECTION WITH THE SOFTWARE OR THE USE OR OTHER DEALINGS IN THE SOFTWARE.


The following applies only to products supporting Wi-Fi.

(c) 2009-2013 by Jeff Mott. All rights reserved.

Redistribution and use in source and binary forms, with or without modification, are permitted provided that the following conditions are met:

- * Redistributions of source code must retain the above copyright notice, this list of conditions, and the following disclaimer.
- * Redistributions in binary form must reproduce the above copyright notice, this list of conditions, and the following disclaimer in the documentation or other materials provided with the distribution.
- * Neither the name CryptoJS nor the names of its contributors may be used to endorse or promote products derived from this software without specific prior written permission.

THIS SOFTWARE IS PROVIDED BY THE COPYRIGHT HOLDERS AND CONTRIBUTORS "AS IS," AND ANY EXPRESS OR IMPLIED WARRANTIES, INCLUDING, BUT NOT LIMITED TO, THE IMPLIED WARRANTIES OF MERCHANTABILITY AND FITNESS FOR A PARTICULAR PURPOSE, ARE DISCLAIMED. IN NO EVENT SHALL THE COPYRIGHT HOLDER OR CONTRIBUTORS BE LIABLE FOR ANY DIRECT, INDIRECT, INCIDENTAL, SPECIAL, EXEMPLARY, OR CONSEQUENTIAL DAMAGES (INCLUDING, BUT NOT LIMITED TO, PROCUREMENT OF SUBSTITUTE GOODS OR SERVICES; LOSS OF USE, DATA, OR PROFITS; OR BUSINESS INTERRUPTION) HOWEVER CAUSED AND ON ANY THEORY OF LIABILITY, WHETHER IN CONTRACT, STRICT LIABILITY, OR TORT (INCLUDING NEGLIGENCE OR OTHERWISE) ARISING IN ANY WAY OUT OF THE USE OF THIS SOFTWARE, EVEN IF ADVISED OF THE POSSIBILITY OF SUCH DAMAGE.

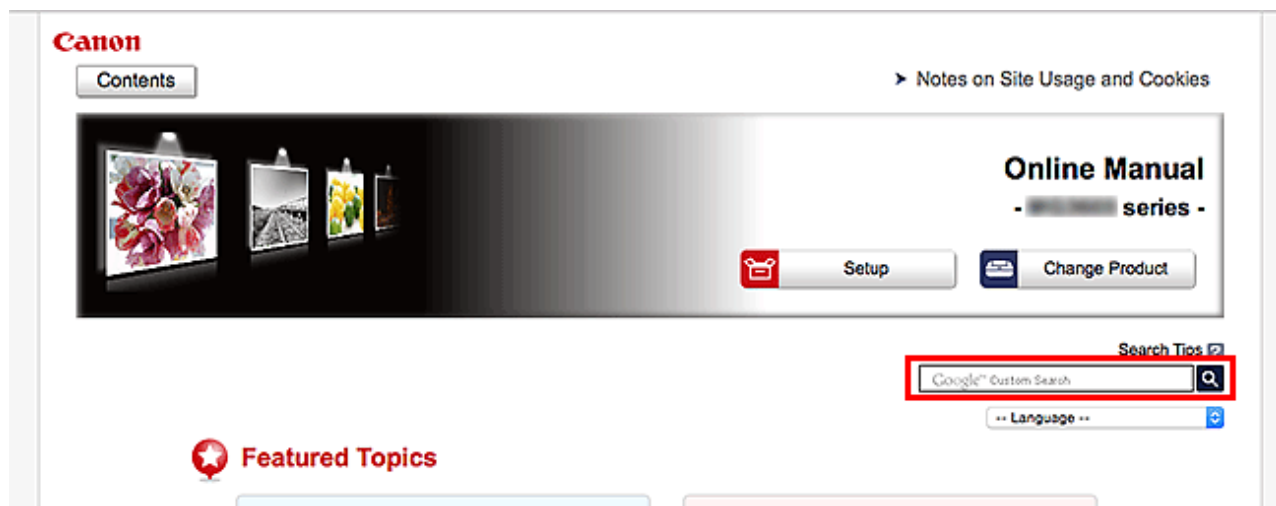
Enter keywords in the search window and click  (Search).

You can search for target pages in this guide.

Entry example: "(your product's model name) load paper"

Search Tips

You can search for target pages by entering keywords in the search window.



Important

- This function may not be available in some countries/regions.

Note

- The displayed screen may vary.
- When searching from this page without entering your product's model name or your application's name, all products supported by this guide will be considered for the search.
If you want to narrow down the search results, add your product's model name or your application's name to the keywords.

• Searching for Functions

Enter your product's model name and a keyword for the function you want to learn about

Example: When you want to learn how to load paper

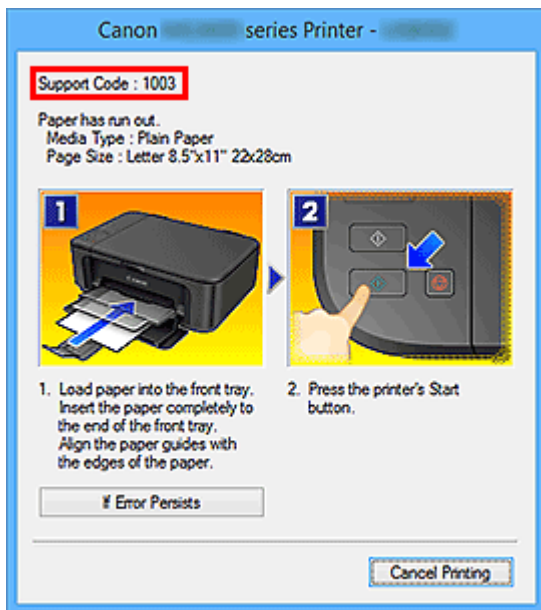
Enter "(your product's model name) load paper" in the search window and perform a search

• Troubleshooting Errors

Enter your product's model name and a support code

Example: When the following error screen appears

Enter "(your product's model name) 1003" in the search window and perform a search



►►► Note

- The displayed screen varies depending on your product.

- **Searching for Application Functions**

Enter your application's name and a keyword for the function you want to learn about

Example: When you want to learn how to print collages with My Image Garden

Enter "My Image Garden collage" in the search window and perform a search

- **Searching for Reference Pages**

Enter your model name and a reference page title*

* You can find reference pages more easily by entering the function name as well.

Example: When you want to browse the page referred to by the following sentence on a scanning procedure page

Refer to "Color Settings Tab" for your model from Home of the Online Manual for details.

Enter "(your product's model name) scan Color Settings Tab" in the search window and perform a search

General Notes (Media Configuration Tool)

When using Media Configuration Tool, the following restrictions apply. Please familiarize yourself with them before using it.

- See the Canon website for products that are compatible with Media Configuration Tool.
- This guide primarily provides explanations using the screens that are displayed when you use the Windows 8.1. operating system (hereafter, Windows 8.1) and the Windows 8 operating system (hereafter, Windows 8).

The Features of Media Configuration Tool

To obtain high quality print results on printers that are compatible with Media Configuration Tool, the optimal printer settings have been consolidated into a media information file for each type of paper. This media file is provided by Canon for Canon genuine paper and Canon feed confirmed paper.

▶▶▶Note

- Download the Media Configuration Tool from the Canon website for use.
- For details on Canon genuine paper and Canon feed confirmed paper, see the following pages for your model from the Home of the Online Manual.
 - Model that supports roll paper
"Paper Information List"
 - Model that does not support roll paper
"Media Types You Can Use"

Canon feed confirmed paper is paper for which printer feeding is confirmed by performing a standard Canon evaluation. Depending on your model, you may not be able to use Canon feed confirmed paper.

Using the Media Configuration Tool allows you to do the following.

- When new paper supported by the printer is added, the media information file can be downloaded from the Internet and the new media information can be added to the printer.
- You can register the same media information for the same model printer.
- You can rearrange lists of the types of paper on the printer control panel and in printer driver dialog boxes and rename them, in addition to other functions.
- When you use paper other than Canon genuine paper or Canon feed confirmed paper, you can customize existing media information and add it to the printer.

▶▶▶Note

- In the Media Configuration Tool, paper created by customizing existing media information is called custom paper.

▶▶▶Important

- Administration of media information using the Media Configuration Tool should be performed by the printer administrator.
- You must connect your computer to the Internet to download the media information from the Internet.
- We recommend that you back up (save) the media information in advance in case the media information file becomes corrupted or you want to restore the original media information.

For how to back up media information, see "Back Up Base Printer Media Information" in "[Copying Media Information from the Base Printer to Another Printer](#)".

Starting Media Configuration Tool

Follow the procedure below to start Media Configuration Tool.

1. Execute any of the following:

- Select the printer for which you want to change the media information on the **Basic Tool** sheet of the Quick Utility Toolbox, and then click the **Media Configuration** button.
- Click the **Media Configuration Tool** button on the **Management Tool** sheet in the Quick Utility Toolbox.
- Start from Program
 - For Windows 10
Click **All apps** > **Media Configuration Tool** on the **Start** menu.
 - For Windows 8.1/Windows 8
Click **Media Configuration Tool** on the **Start** screen.

If **Media Configuration Tool** is not displayed on the **Start** screen, select the **Search** charm, and search for **Media Configuration Tool**.
 - For Windows 7/Windows Vista
Click **Media Configuration Tool** on the **Start** menu.

▶▶▶Note

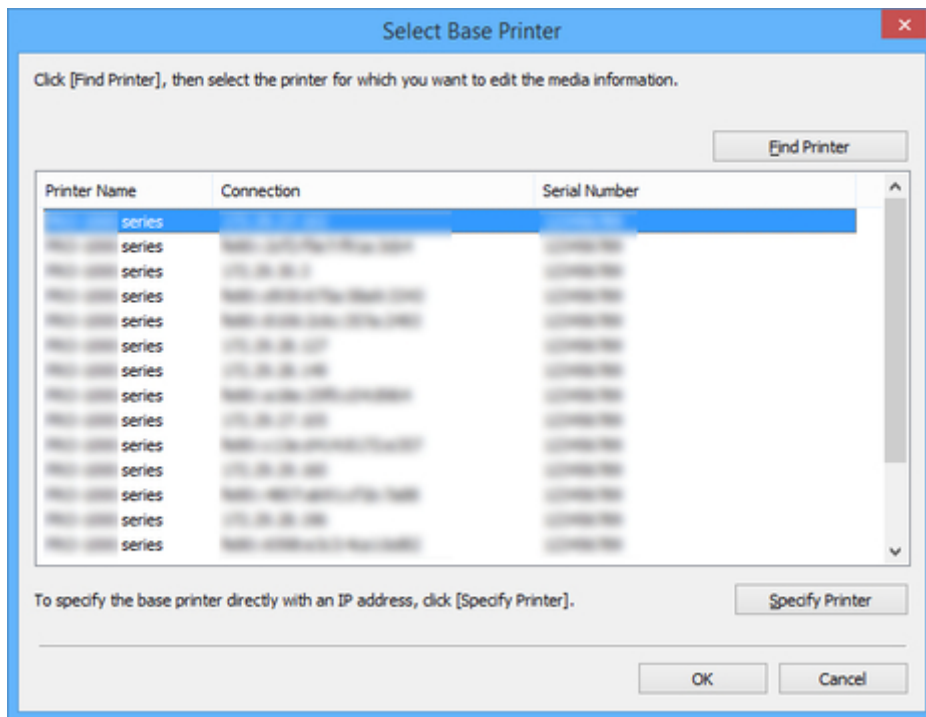
- Quick Utility Toolbox is a Canon software application.

A search for printers is performed, and the **Select Base Printer** dialog box appears.

▶▶▶Note

- It may take time before the **Select Base Printer** dialog box appears.

2. Select the printer for which you want to change the media information, and then click the **OK** button.



►►►Note

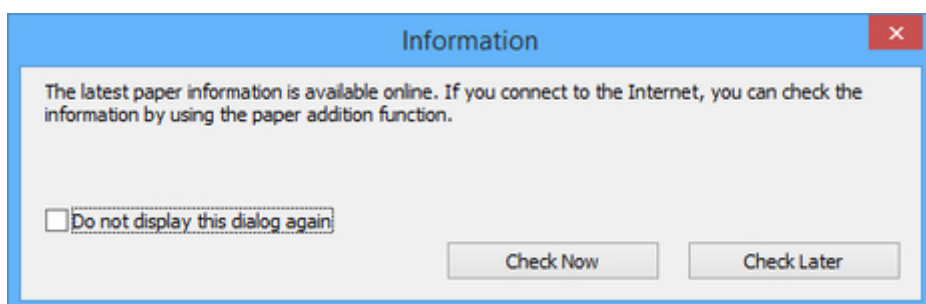
- When started from the **Basic Tool** sheet in the Quick Utility Toolbox, only printers selected with the Quick Utility Toolbox are displayed.
- If the printer whose media information you want to update is not displayed, click the **Find Printer** button or the **Specify Printer** button to display the **Specify Printer** dialog box, and enter the printer IP address directly.

A message about the latest media information appears.

►►►Note

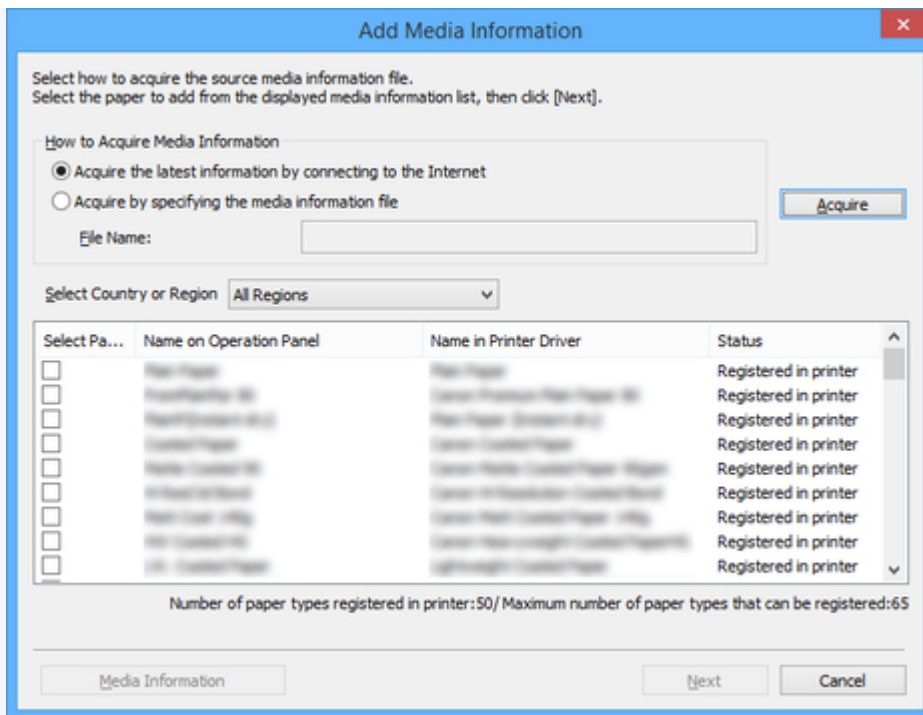
- It may take time before this message appears.

3. Click the **Check Now** or **Check Later** button.



►►►Note

- Click the **Check Now** button to acquire the media information. The **Add Media Information** dialog box appears, and you can check the latest media information.



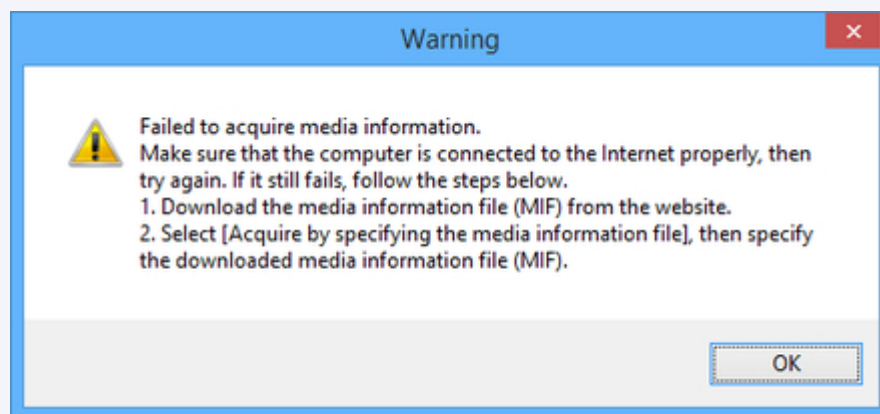
To add media information, do so while referring to "[Adding Media Information](#)".

To cancel without adding media information, click the **Cancel** button.

- If the following message appears, the media information file cannot be downloaded from the Internet.

Obtain the media information file from the Canon website using a computer connected to the Internet.

Specify the media information file that you obtained by selecting **Acquire by specifying the media information file**, clicking the **Acquire** button, and specifying the file in the **Open** dialog box.

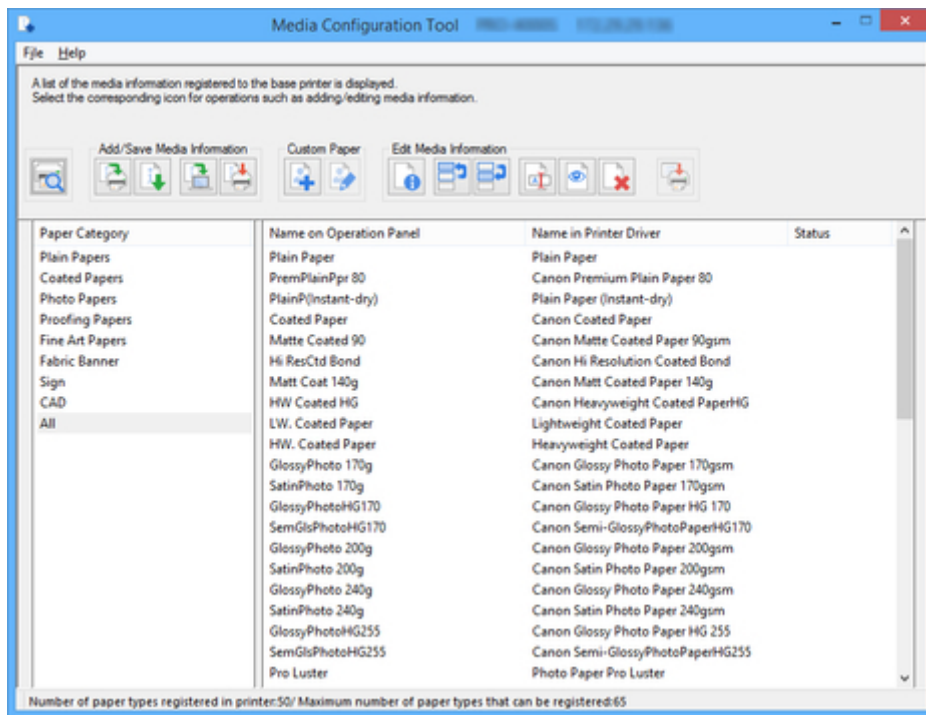


- You can add media information later.

■ [Updating Media Information](#)

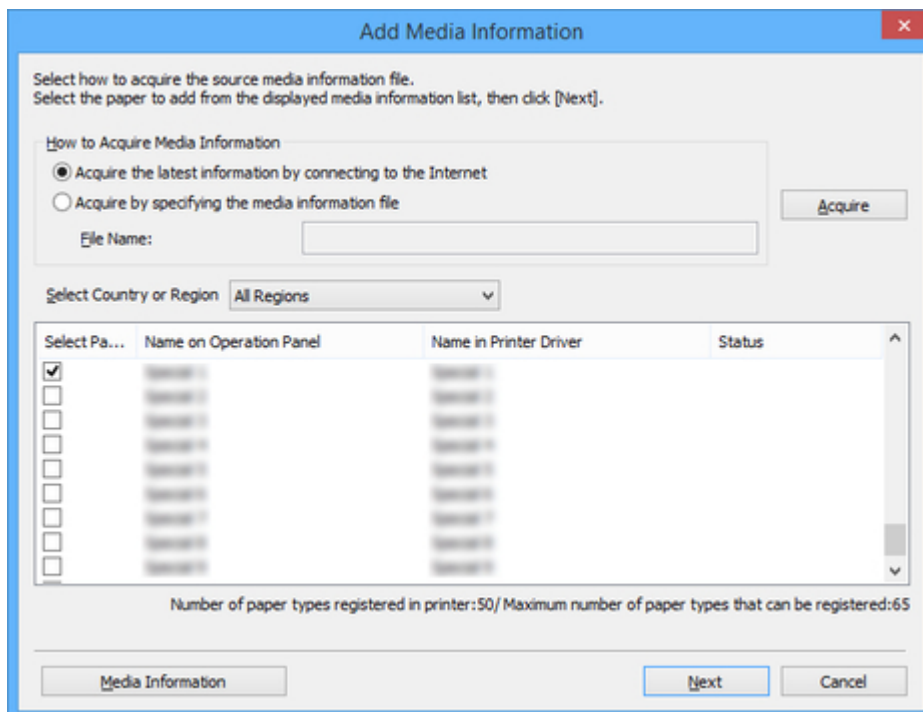
The main screen appears.

The media information for the selected printer appears in the main screen.



Adding Media Information

1. Select the check box of the media information that you want to add from the displayed media information, and then click the **Next** button.



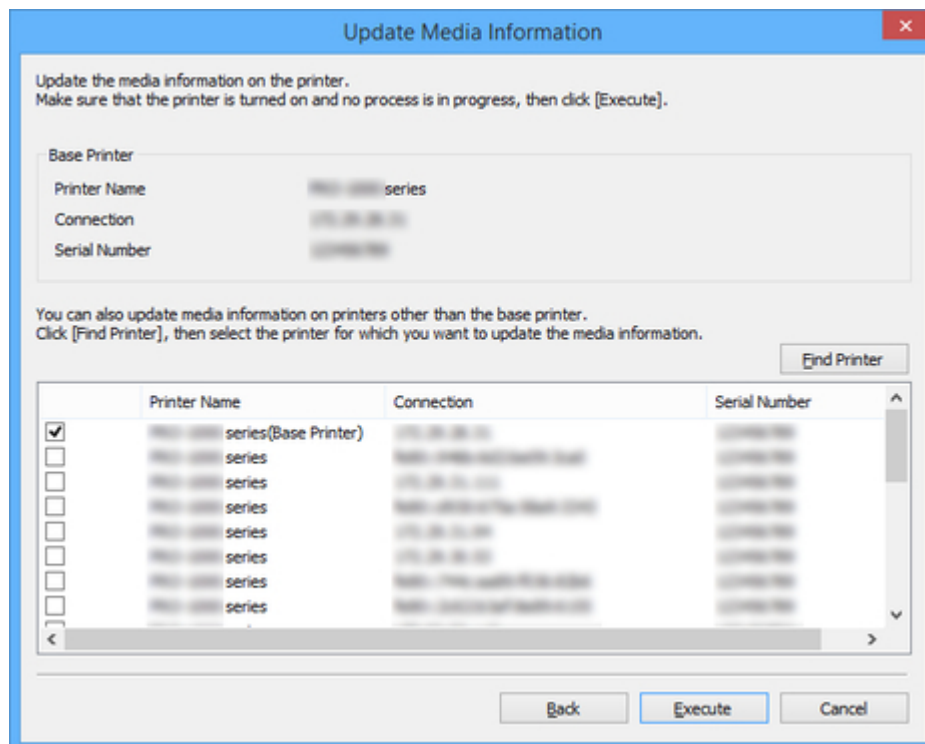
Note

- Paper whose **Status** is **Registered in printer** is paper that is already registered in the printer.

- If you select your country or region in **Select Country or Region**, only the paper sold in your country or region appears.
- If you select the media information and click the **Media Information** button, the **Simple Paper Reference** dialog box appears, allowing you to check the details of the selected media information.

The **Update Media Information** dialog box appears.

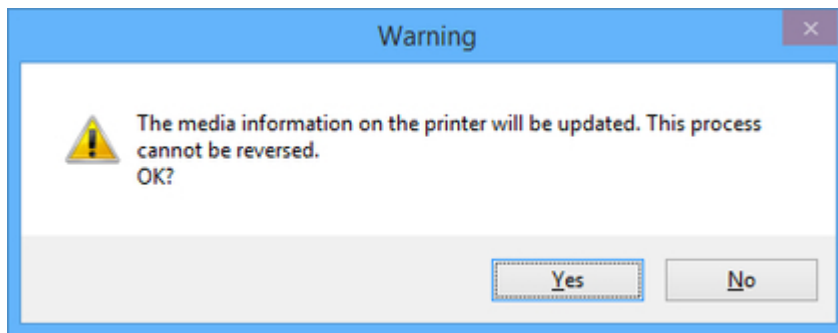
2. From the displayed printers, select the check box of the printers for which you want to update media information at the same time as the base printer, and then click the **Execute** button.



►►►Note

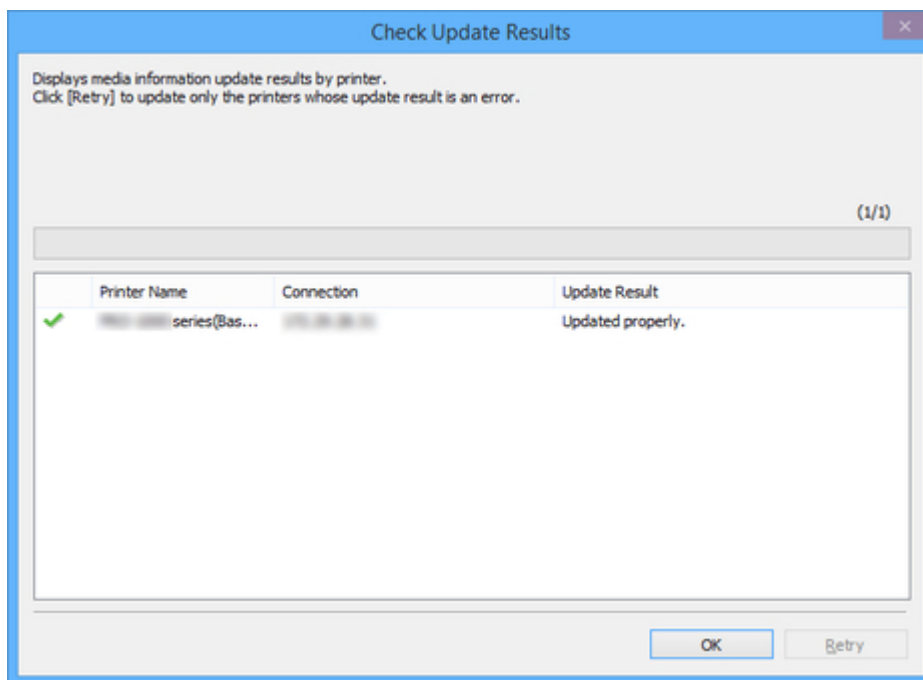
- If the printer you want to update is not displayed, verify the state of the printer and network, and then click the **Find Printer** button.
- In addition to the base printer, the printers that are the same model as the base printer appear.
- You cannot clear the check mark for the base printer.

3. Click the **Yes** button.




The **Check Update Results** dialog box appears.


4. Verify that  mark appears to the left of the **Printer Name**, and then click the **OK** button.



▶▶▶Note

- Media information was not updated for printers with a  mark displayed to the left of the **Printer Name**.

Verify the state of the printer and network, and click the **Retry** button.

Updating media information is executed again for printers with the  mark.


The media information is applied to the printer.

▶▶▶Important


- To apply the media information to the printer driver, you must update the media information in the printer driver.

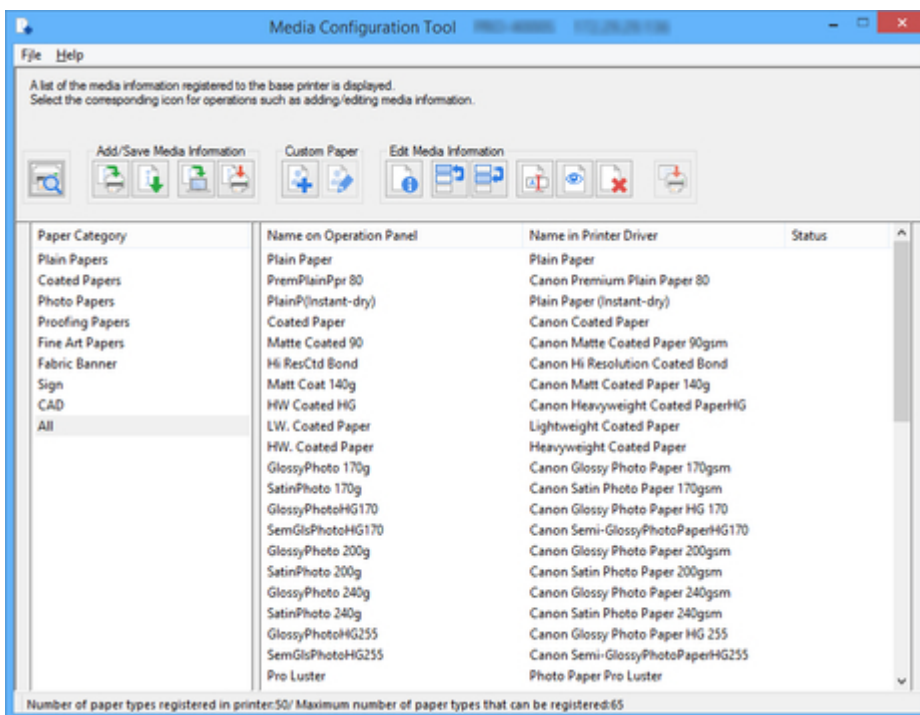
For details, see "Updating Media Information in Printer Driver" for your model from the Home of the Online Manual.

Main Screen

The media information registered in the printer selected at startup or with  (Select Base Printer) appears in the main screen.

Note

- In Media Configuration Tool, the printer at startup or selected with  (Select Base Printer) is called the base printer.

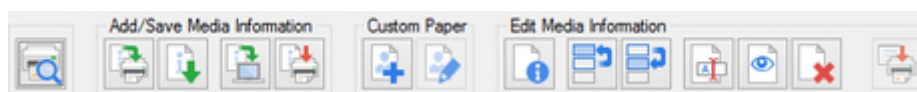


Note

- In the Media Configuration Tool, paper created by customizing existing media information is called custom paper.
Custom appears in **Status** for custom paper.
- Paper that is displayed grayed out does not appear in the printer control panel and printer driver.
- If the media information displayed in the main screen and the media information displayed in the printer driver are different, update the media information in the printer driver.

Main Screen Buttons

Click the buttons in the main screen to select the base printer and to add or edit media information.





(Select Base Printer)

Select the printer for which you want to change the media information.

■ [Changing the Base Printer](#)

Add/Save Media Information Button Group

Using this group, you can add Canon genuine paper or Canon feed confirmed paper not registered to the printer and update the printer's media information to the latest information and register the same media information for the same model printers.

You can also save the printer's media information to your computer and add media information for custom paper created with another printer.

You can update the media information for several printers at the same time.

▶▶▶Note

- If **Maximum number of paper types that can be registered** displayed on the lower left of the main screen is exceeded, media information cannot be added to the printer.



(Add Media Information)

Updates the media information.

■ [Updating Media Information](#)

Also, media information files downloaded from the Canon website and media information files exported from the Media Configuration Tool are imported.

■ [Importing Media Information](#)



(Export Media Information)

Select the paper for the base printer's media information, export the file, and save it.

■ [Exporting Media Information](#)



(Back Up Media Information)

The base printer's media information is consolidated, exported to a file, and saved (backed up).

You can also save the paper display order and Show/Hide setting.

■ [Copying Media Information from the Base Printer to Another Printer](#)



(Copy Media Information to Specified Printer)

The backed up media information will be applied to other printers of the same model.

■ [Copying Media Information from the Base Printer to Another Printer](#)

Custom Paper Button Group

In the Media Configuration Tool, paper created by customizing existing media information is called custom paper.

To improve the print quality and feeding of paper other than Canon genuine paper or Canon feed confirmed paper, add and edit custom paper.

With this group, you can add a new custom paper and edit the media information of a custom paper you have added.

You can also create a calibration target for performing color calibration using the custom paper.

You can add and edit custom papers for multiple printers at the same time.



(Create Custom Paper)

Add a new custom paper to the printer.

■ [Adding Custom Paper](#)



(Edit Custom Paper)

Change the settings of custom paper you have already added.

You can set the printhead height and ink usage settings, create a calibration target, and specify an ICC profile.

■ [Editing Custom Paper](#)

Edit Media Information Button Group

With this group, you can change the media information displayed in the control panel and printer driver for the base printer.

▶▶▶Note

- It may not be possible to delete or show/hide under some conditions.



(Simple Paper Reference)

Displays the media information details.

■ [Displaying Media Information Details](#)



(Change Display Order of Paper (Up))



(Change Display Order of Paper (Down))

Change the display order of media information displayed in the printer control panel and printer driver.

■ [Changing the Display Order of Media Information](#)



(Change Paper Name)

Change the name of the paper displayed in the printer control panel and printer driver.

■ [Changing Media Names](#)



(Show/Hide Paper)

Switch between showing and hiding the media information displayed in the printer control panel and printer driver.

■ [Switching Media Information to Show/Hide](#)



(Delete Media Information)

Delete the printer control panel and printer driver media information.

■ [Deleting Media Information](#)




(Apply Edits)


The media information edited with the Media Configuration Tool are applied to the printer.

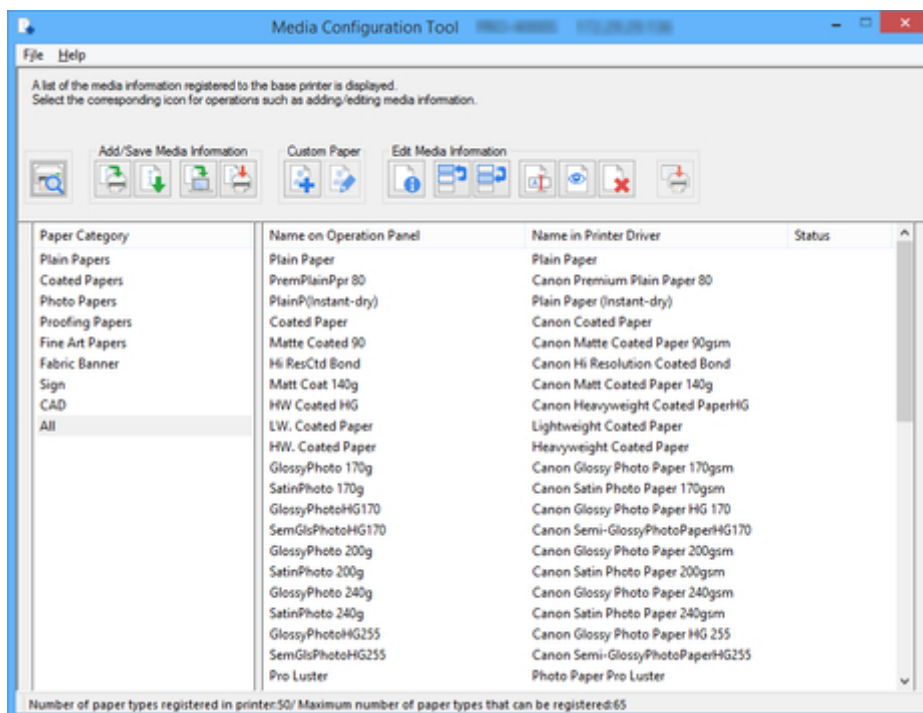
Changing the Base Printer

Change the printer for which you want to change the media information.

►►►Note

- In Media Configuration Tool, the printer at startup or selected with  (Select Base Printer) is called the base printer.

1. Click  (Select Base Printer) (or select **Find Printer** from the **File** menu).

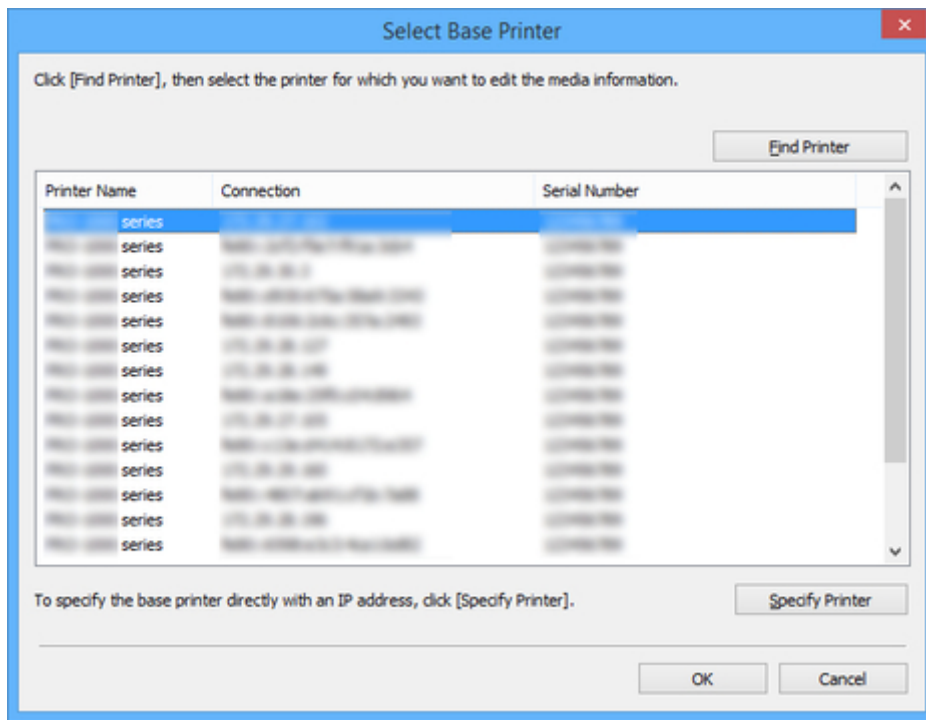


A search for printers is performed, and the **Select Base Printer** dialog box appears.

►►►Note

- It may take time before the **Select Base Printer** dialog box appears.

2. Select the printer for which you want to change the media information, and then click the **OK** button.



►►►Note

- If the printer whose media information you want to update is not displayed, click the **Find Printer** button or the **Specify Printer** button to display the **Specify Printer** dialog box, and enter the printer IP address directly.

The media information for the selected printer appears in the main screen.

►►►Note

- It may take time before the media information appears in the main screen.

Updating Media Information

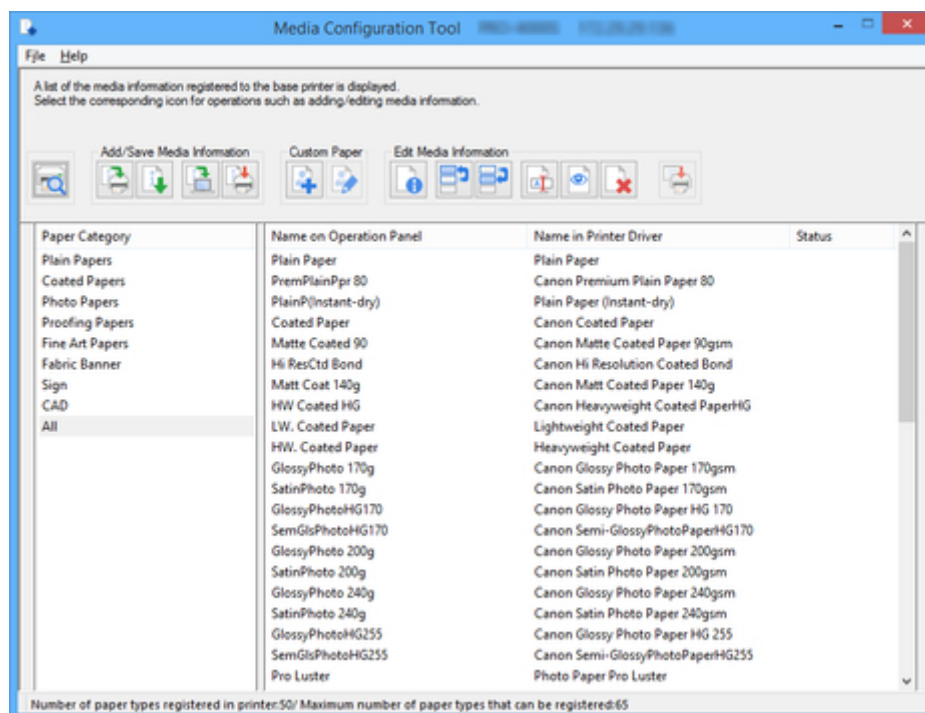
Register the latest media information files (Media Information File/.am1x files) released by Canon in printers.

Important

- Do not attempt to print or turn the printer off while the program is communicating with the printer.
Do not add or edit media information on a printer from another computer while it is being added or edited.
- We recommend backing up the media information in advance before adding or editing media information.

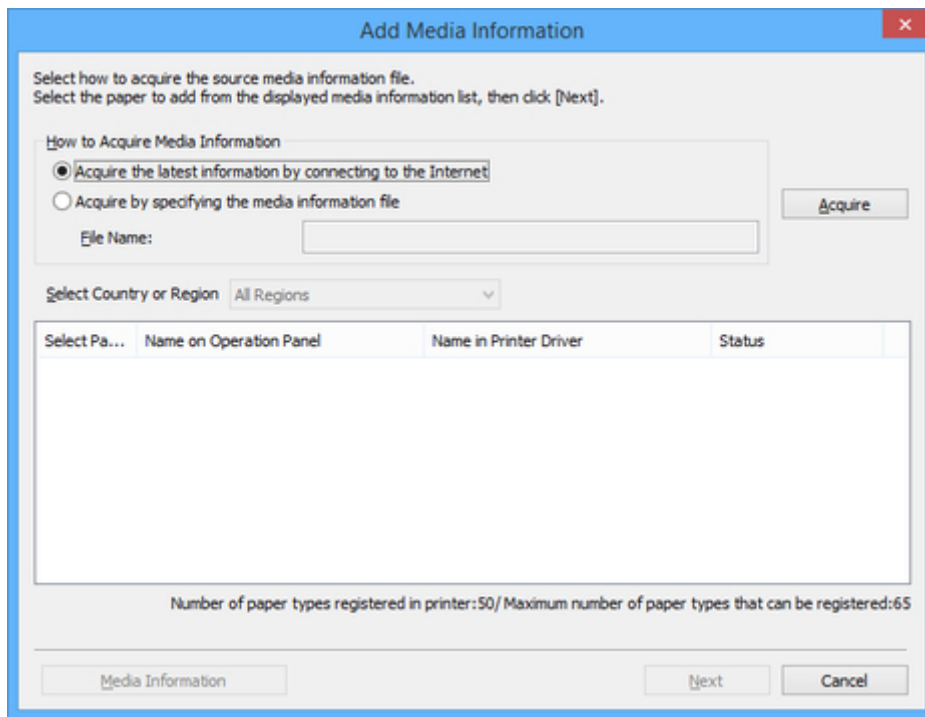
For how to back up media information, see "Back Up Base Printer Media Information" in "[Copying Media Information from the Base Printer to Another Printer](#)".

1. Click  (Add Media Information) in the **Add/Save Media Information** button group.



The **Add Media Information** dialog box appears.

2. Select **Acquire the latest information by connecting to the Internet**, and then click the **Acquire** button.



Add Media Information

Select how to acquire the source media information file.
Select the paper to add from the displayed media information list, then click [Next].

How to Acquire Media Information

☒ Acquire the latest information by connecting to the Internet

☐ Acquire by specifying the media information file

File Name:

Acquire

Select Country or Region: All Regions

Select Pa...	Name on Operation Panel	Name in Printer Driver	Status

Number of paper types registered in printer:50/ Maximum number of paper types that can be registered:65

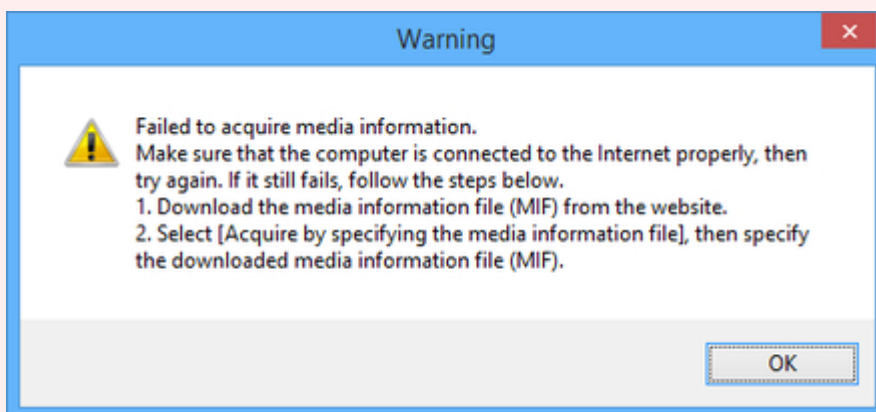
Media Information **Next** **Cancel**

Important


- If the following message appears, the media information file cannot be downloaded from the Internet.

Obtain the media information file from the Canon website using a computer connected to the Internet.

Specify the media information file that you obtained by selecting **Acquire by specifying the media information file**, clicking the **Acquire** button, and specifying the file in the **Open** dialog box.



Warning

 Failed to acquire media information.
Make sure that the computer is connected to the Internet properly, then try again. If it still fails, follow the steps below.

1. Download the media information file (MIF) from the website.
2. Select [Acquire by specifying the media information file], then specify the downloaded media information file (MIF).

OK

The obtained media information appears.

3. Select the check box of the media information that you want to add from the displayed media information, and then click the **Next** button.

Add Media Information

Select how to acquire the source media information file.
Select the paper to add from the displayed media information list, then click [Next].

How to Acquire Media Information

☒ Acquire the latest information by connecting to the Internet
☐ Acquire by specifying the media information file

File Name:

Acquire

Select Country or Region: All Regions

Select Pa...	Name on Operation Panel	Name in Printer Driver	Status
<input checked="" type="checkbox"/>			
<input type="checkbox"/>			
<input type="checkbox"/>			
<input type="checkbox"/>			
<input type="checkbox"/>			
<input type="checkbox"/>			
<input type="checkbox"/>			
<input type="checkbox"/>			
<input type="checkbox"/>			
<input type="checkbox"/>			

Number of paper types registered in printer:50/ Maximum number of paper types that can be registered:65

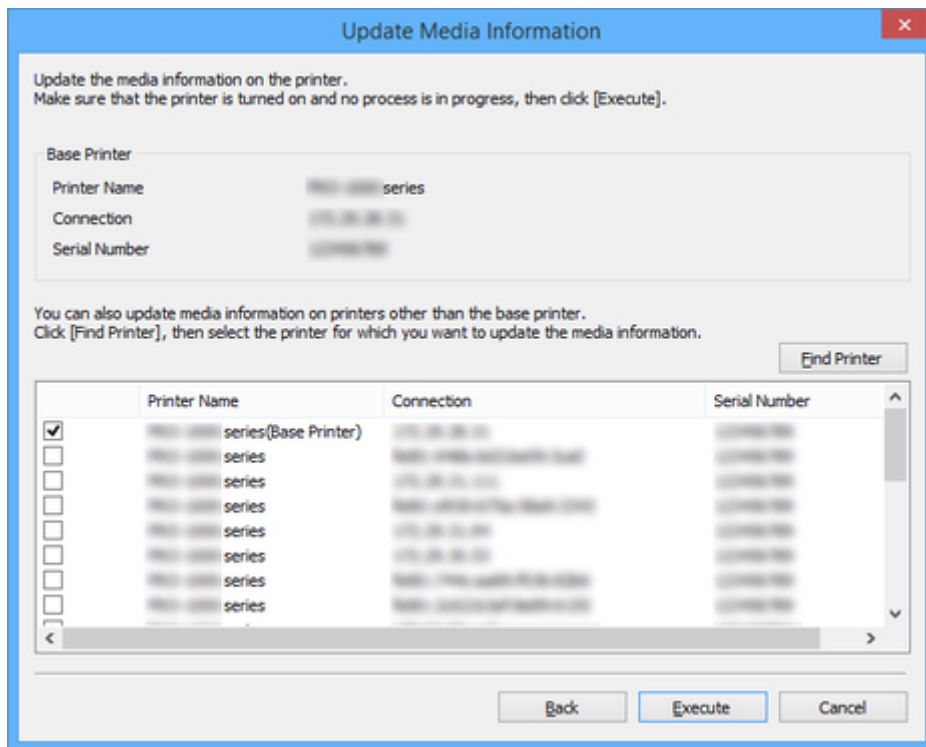
Media Information Next Cancel

»»»Note

- Paper whose **Status** is **Registered in printer** is paper that is already registered in the printer.
- If you select your country or region in **Select Country or Region**, only the paper sold in your country or region appears.
- If you select the media information and click the **Media Information** button, the **Simple Paper Reference** dialog box appears, allowing you to check the details of the selected media information.

The **Update Media Information** dialog box appears.

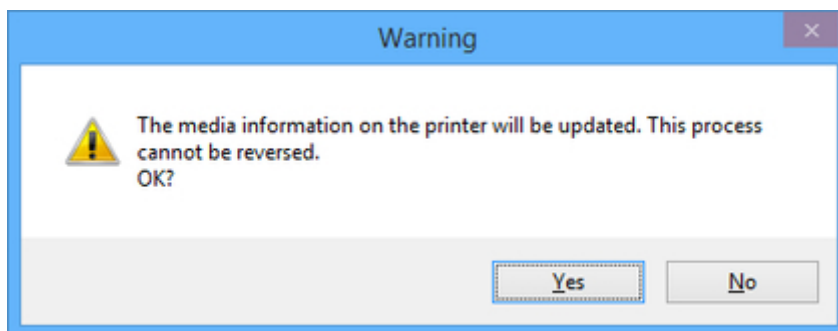
4. From the displayed printers, select the check box of the printers for which you want to update media information at the same time as the base printer, and then click the **Execute** button.



»»»Note

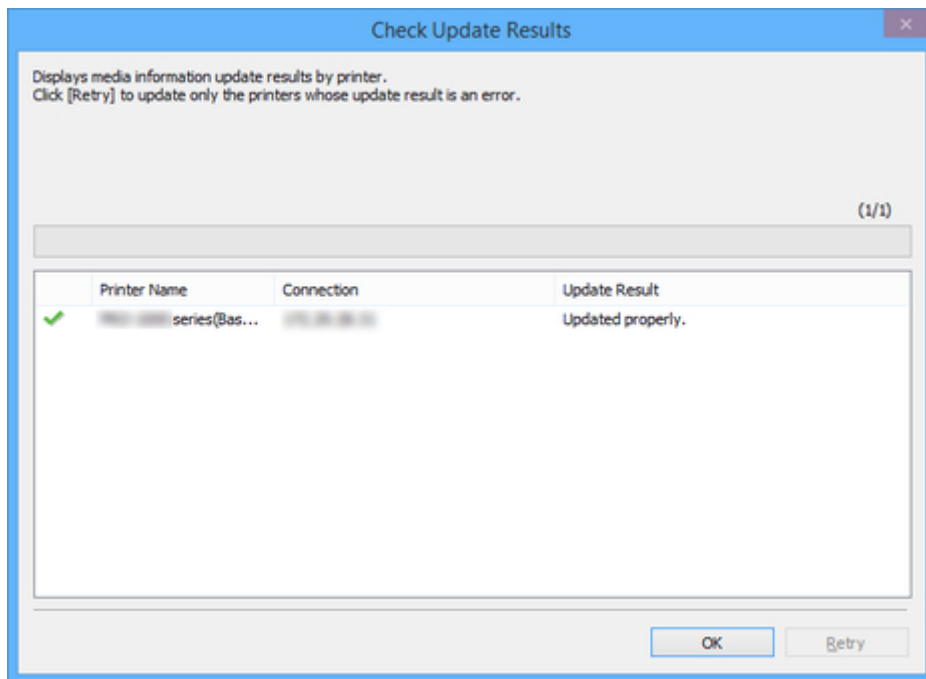
- If the printer you want to update is not displayed, verify the state of the printer and network, and then click the **Find Printer** button.
- In addition to the base printer, the printers that are the same model as the base printer appear.
- You cannot clear the check mark for the base printer.

5. Click the **Yes** button.



The **Check Update Results** dialog box appears.

6. Verify that  mark appears to the left of the **Printer Name**, and then click the **OK** button.



▶▶▶Note

- Media information was not updated for printers with a **✗** mark displayed to the left of the **Printer Name**.

Verify the state of the printer and network, and click the **Retry** button.

Updating media information is executed again for printers with the **✗** mark.

The media information is applied to the printer.

▶▶▶Important

- To apply the media information to the printer driver, you must update the media information in the printer driver.

For details, see "Updating Media Information in Printer Driver" for your model from the Home of the Online Manual.

Exporting Media Information and Importing to Another Printer

- [Exporting Media Information](#)
- [Importing Media Information](#)
- [Copying Media Information from the Base Printer to Another Printer](#)

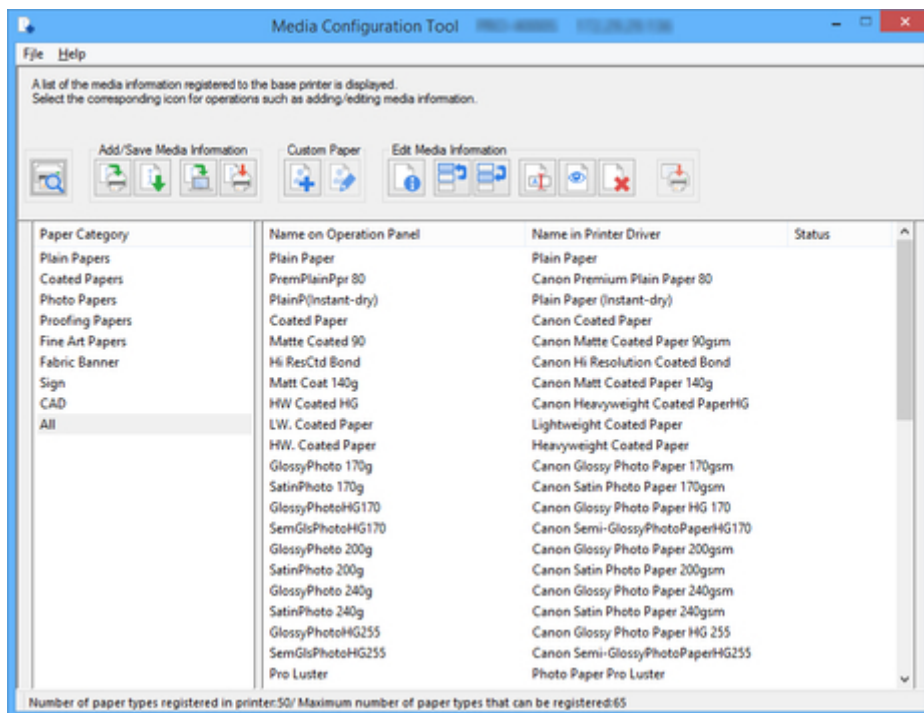
Exporting Media Information

Select the paper you need from the media information registered in the base printer, export to a file, and save it.

You can add the saved media information on another printer of the same model.

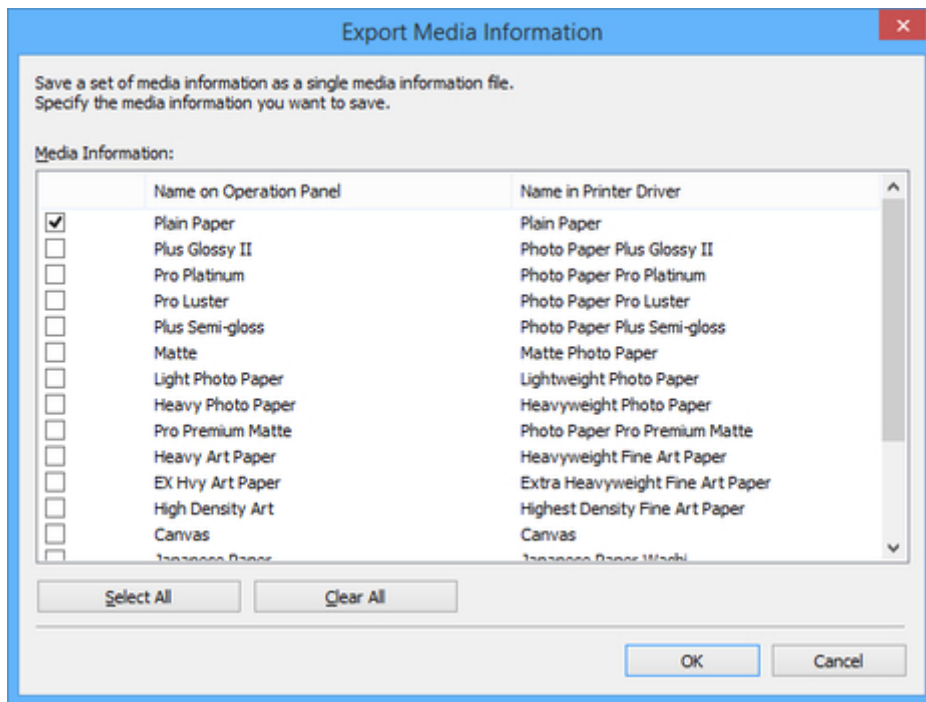
For details on the procedure for adding a media information file, see "[Importing Media Information](#)."

1. Click  (Export Media Information) in the **Add/Save Media Information** button group.



The **Export Media Information** dialog box appears.

2. Select the check box of the media information that you want to export, and then click the **OK** button.

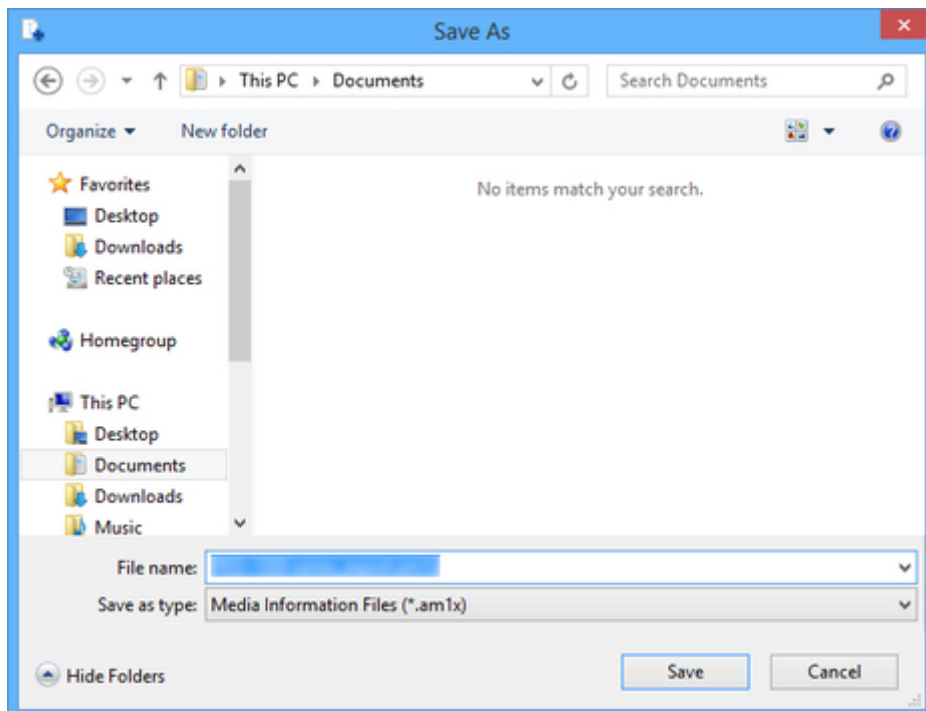


►►►Note

- You can select multiple media information.

The **Save As** dialog box appears.

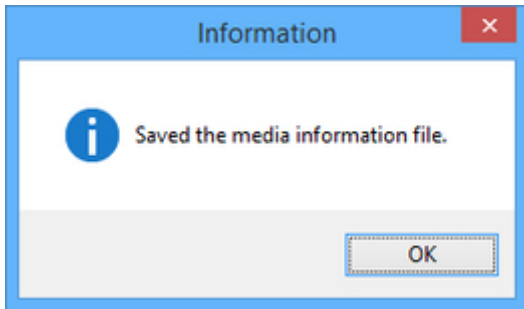
3. Specify the folder where you want to save the media information file, and click the **Save** button.



►►►Note

- You can change the file name by selecting and editing the file name.
- For custom paper where a calibration target has been created, the calibration target information is also exported to the file.

4. Click the **OK** button.



The media information file (.am1x file) is saved.

Importing Media Information

Media information files downloaded from the Canon website and media information files exported from the Media Configuration Tool can be imported and applied to printers.

Important

- Do not attempt to print or turn the printer off while the program is communicating with the printer.
Do not add or edit media information on a printer from another computer while it is being added or edited.

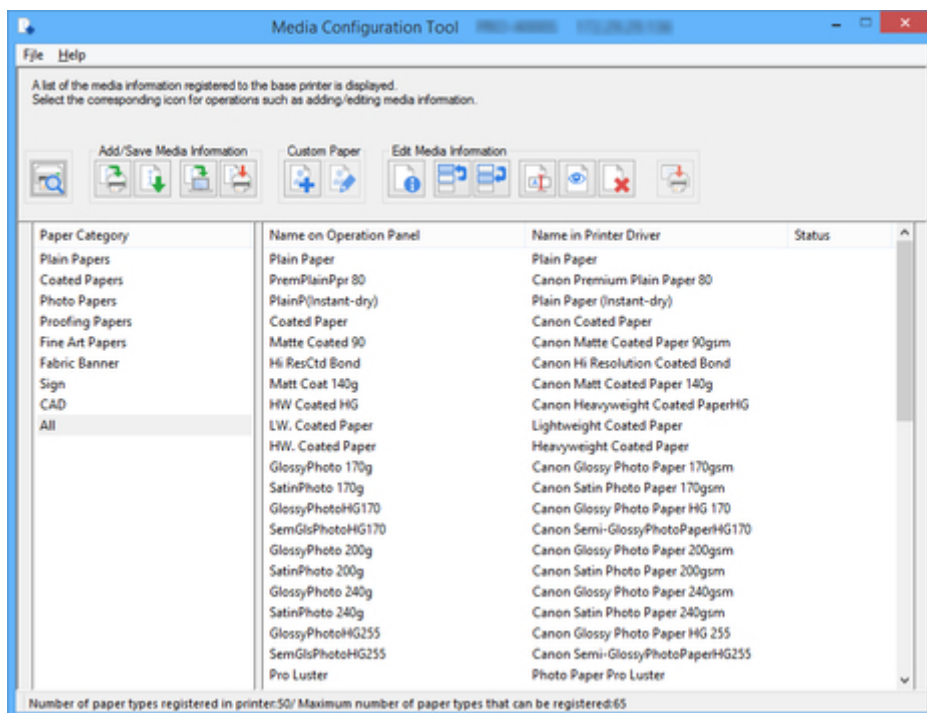
- We recommend backing up the media information in advance before adding or editing media information.

For how to back up media information, see "Back Up Base Printer Media Information" in "[Copying Media Information from the Base Printer to Another Printer](#)".

Note

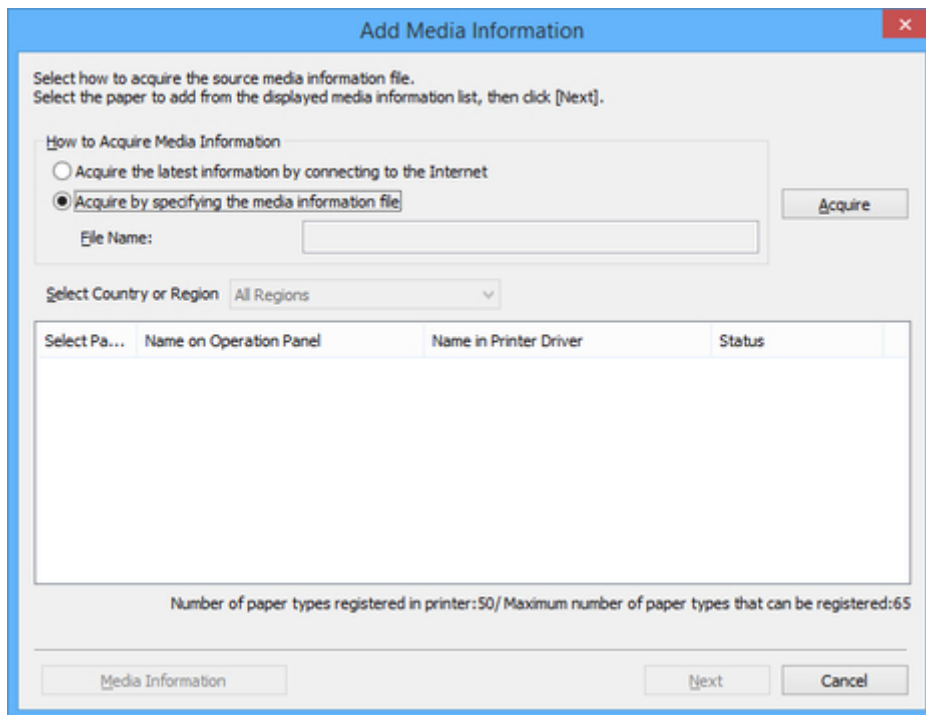
- You can load media information for each paper.
- You can also import the media information of custom paper.
- If the imported media information file of the custom paper contains calibration target information, the calibration target will also be registered in the printer.

1. Click  (Add Media Information) in the **Add/Save Media Information** button group.



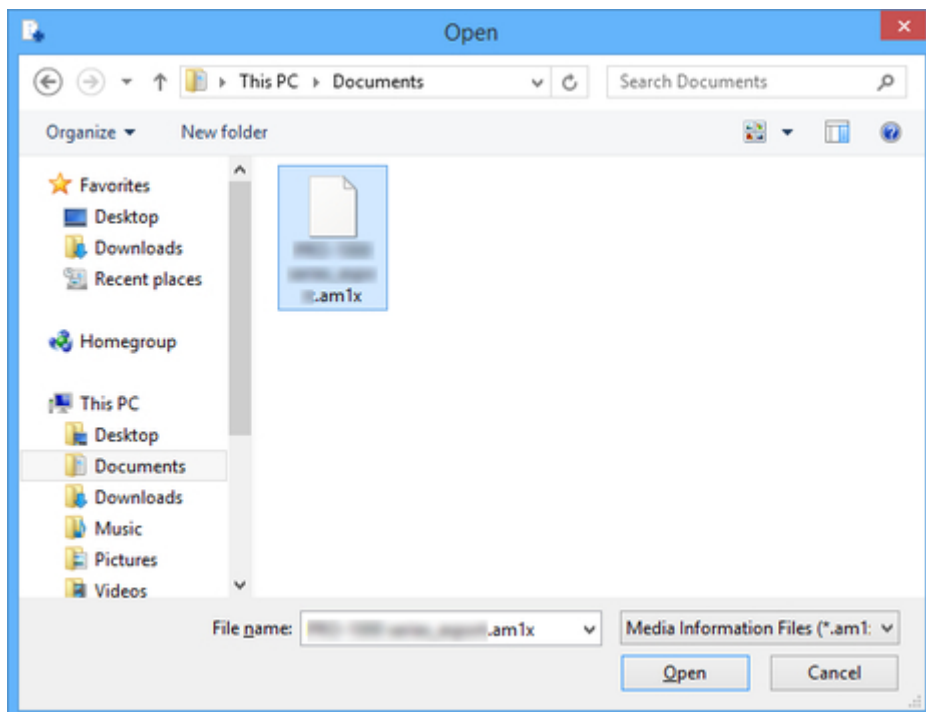
The **Add Media Information** dialog box appears.

2. Select **Acquire by specifying the media information file**, and then click the **Acquire** button.



The **Open** dialog box appears.

3. Select the media information file (.am1x file), and click the **Open** button.



The obtained media information appears.

4. Select the check box of the media information that you want to add from the displayed media information, and then click the **Next** button.

Add Media Information

Select how to acquire the source media information file.
Select the paper to add from the displayed media information list, then click [Next].

How to Acquire Media Information

☐ Acquire the latest information by connecting to the Internet

☒ Acquire by specifying the media information file

File Name:

Acquire

Select Country or Region: All Regions

Select Pa...	Name on Operation Panel	Name in Printer Driver	Status
<input checked="" type="checkbox"/>			
<input type="checkbox"/>			
<input type="checkbox"/>			
<input type="checkbox"/>			
<input type="checkbox"/>			
<input type="checkbox"/>			
<input type="checkbox"/>			
<input type="checkbox"/>			
<input type="checkbox"/>			
<input type="checkbox"/>			

Number of paper types registered in printer:50/ Maximum number of paper types that can be registered:65

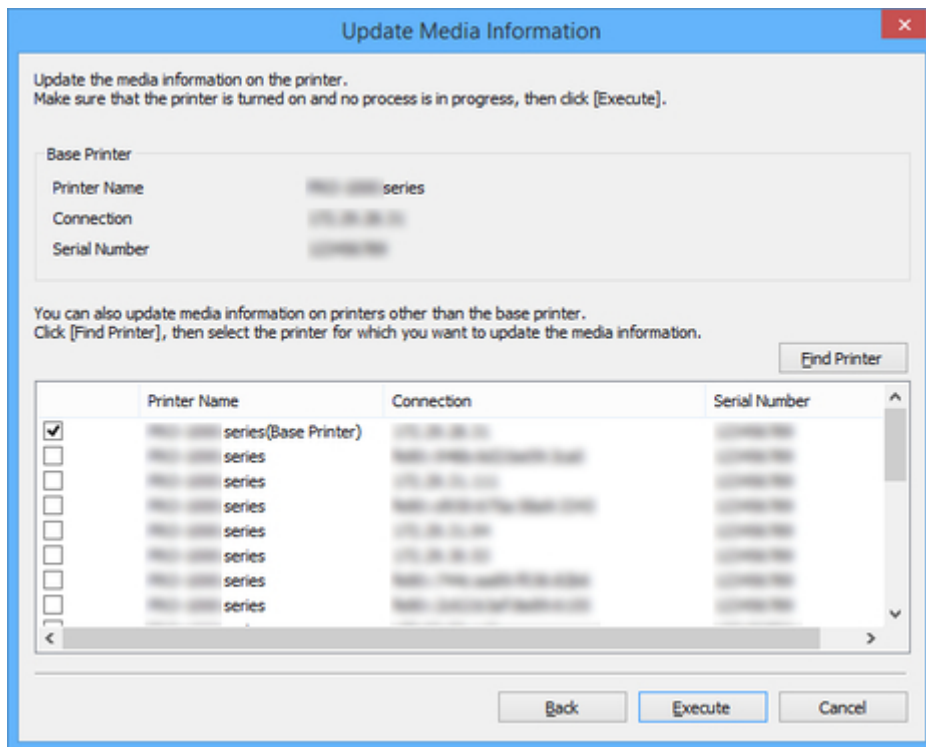
Media Information Next Cancel

Note

- Paper whose **Status** is **Registered in printer** is paper that is already registered in the printer.
- If you select your country or region in **Select Country or Region**, only the paper sold in your country or region appears.
- If you select the media information and click the **Media Information** button, the **Simple Paper Reference** dialog box appears, allowing you to check the details of the selected media information.

The **Update Media Information** dialog box appears.

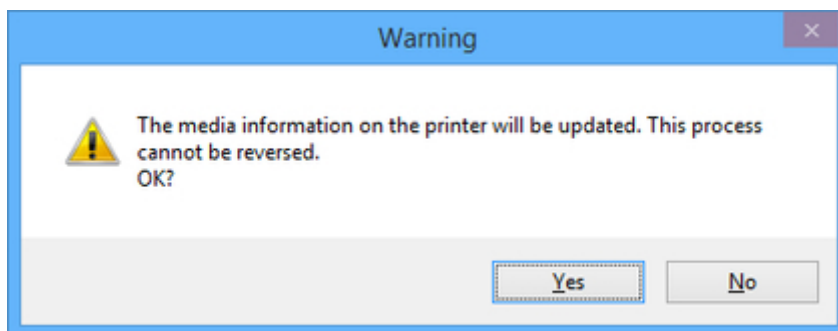
5. From the displayed printers, select the check box of the printers for which you want to update media information at the same time as the base printer, and then click the **Execute** button.



»»Note

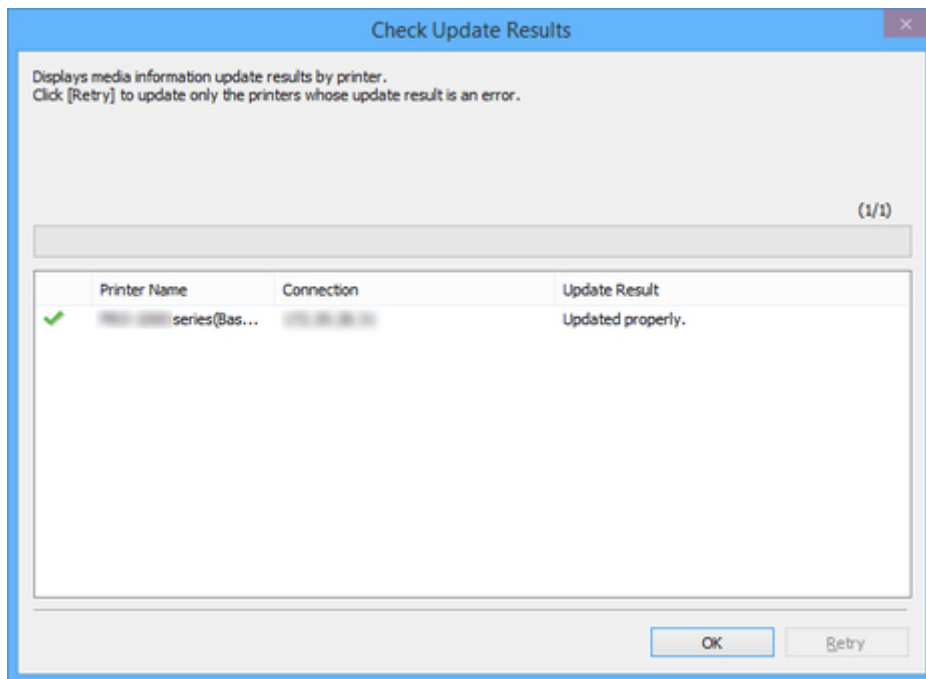
- If the printer you want to update is not displayed, verify the state of the printer and network, and then click the **Find Printer** button.
- In addition to the base printer, the printers that are the same model as the base printer appear.
- You cannot clear the check mark for the base printer.

6. Click the **Yes** button.



The **Check Update Results** dialog box appears.

7. Verify that  mark appears to the left of the **Printer Name**, and then click the **OK** button.



▶▶▶Note

- Media information was not updated for printers with a **✗** mark displayed to the left of the **Printer Name**.

Verify the state of the printer and network, and click the **Retry** button.

Updating media information is executed again for printers with the **✗** mark.

The media information is applied to the printer.

▶▶▶Important

- To apply the media information to the printer driver, you must update the media information in the printer driver.

For details, see "Updating Media Information in Printer Driver" for your model from the Home of the Online Manual.

Copying Media Information from the Base Printer to Another Printer

Copy all the media information registered in the printer to other printers of the same model.

The same media information will be registered for printers of the same model.

To copy the media information of the base printer to another printer, first save (back up) the media information of the base printer to your computer.

Next, import the media information that you backed up.

Important


- Do not attempt to print or turn the printer off while the program is communicating with the printer.
Do not add or edit media information on a printer from another computer while it is being added or edited.
- When you execute the copy, the media information registered in the printer being copied to will be deleted.

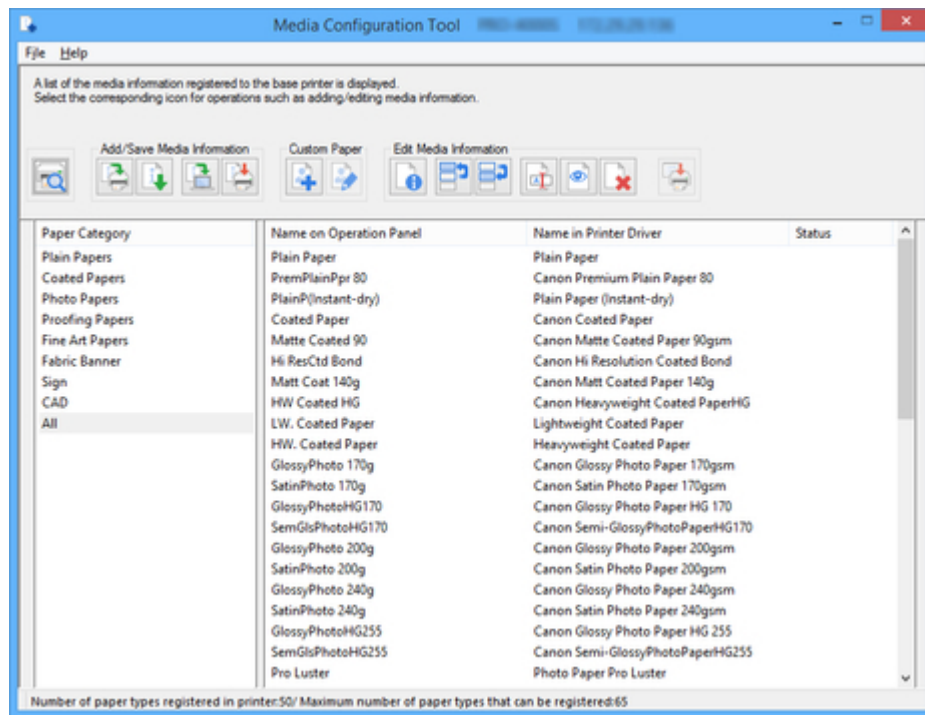
Note

- The media information of the custom paper will also be copied.
- If the copied media information file of the custom paper contains calibration target information, the calibration target will also be registered in the printer.

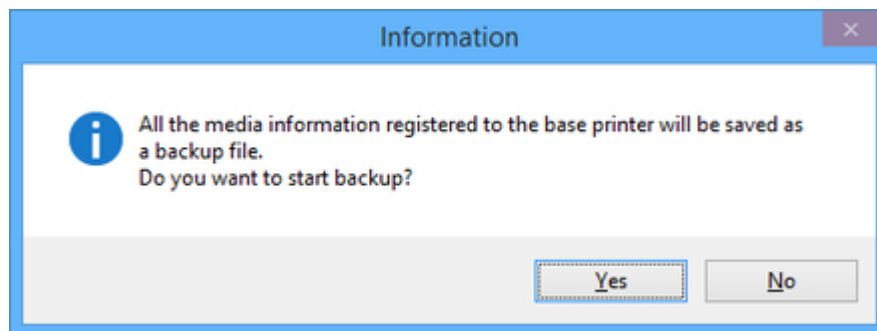
Back Up Base Printer Media Information

You can save (back up) the base printer's media information to your computer.

1. Click  (Back Up Media Information) in the **Add/Save Media Information** button group.

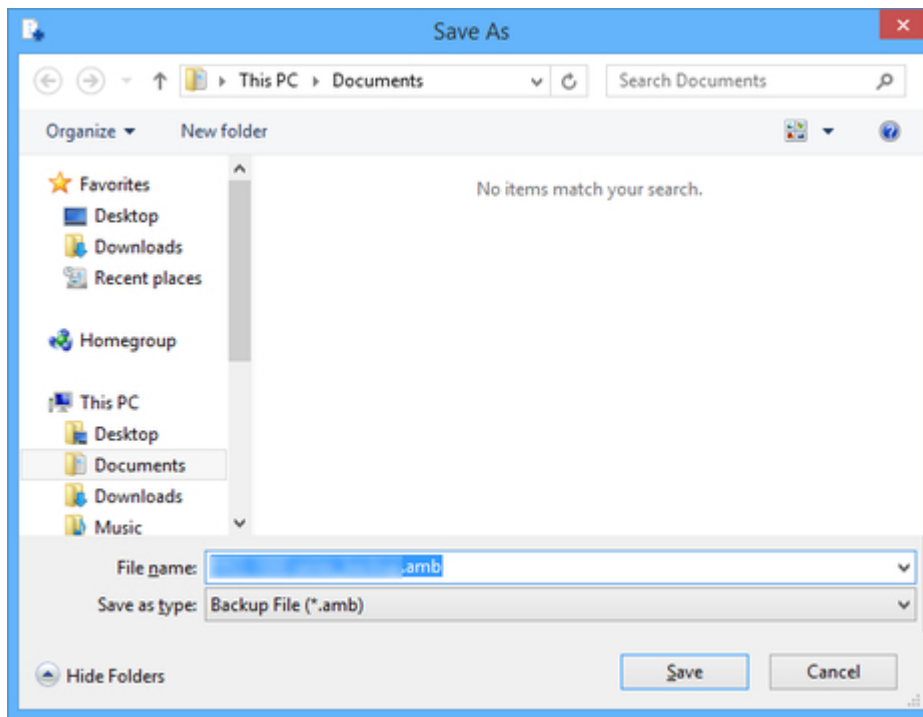


2. Click the **Yes** button.



The **Save As** dialog box appears.

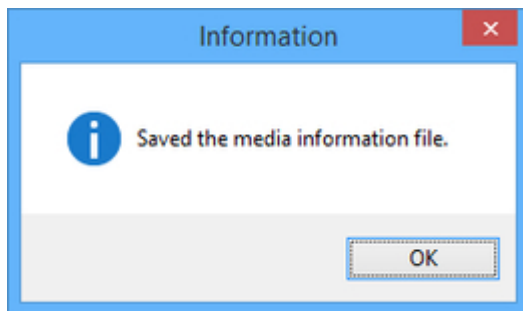
3. Specify the folder where you want to save the media information backup file, and click the **Save** button.



►►►Note

- You can change the file name by selecting and editing the file name.
- For custom paper where a calibration target has been created, the calibration target information is also exported to the file.

4. Click the **OK** button.




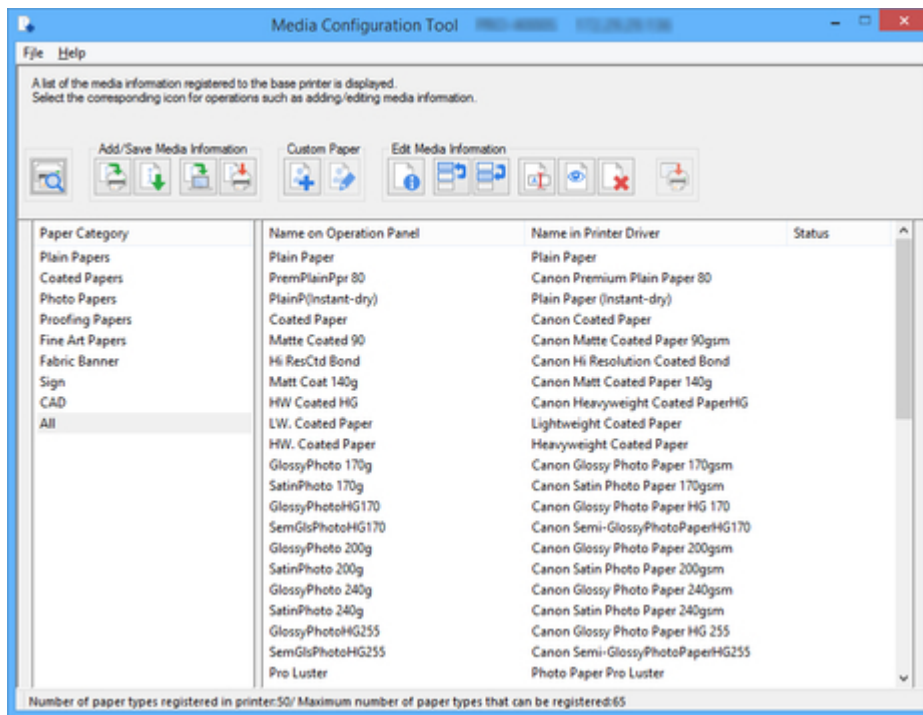
The media information backup file (.amb file) is saved.

Copy Backed Up Media Information to the Printer

Import the media information file that you backed up.

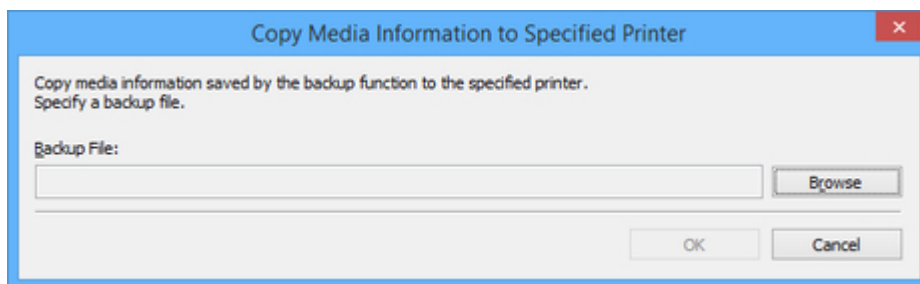
If you want to restore the media information that you backed up in advance, import the media information file using the following procedure.

1. Click  (Copy Media Information to Specified Printer) in the **Add/Save Media Information** button group.



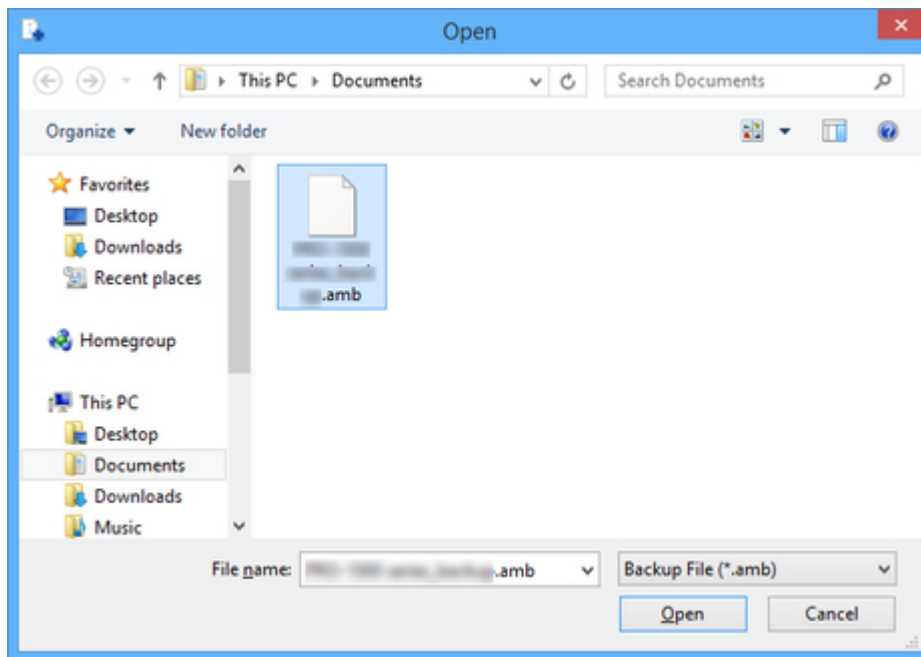
The **Copy Media Information to Specified Printer** dialog box appears.

- Click the **Browse** button.

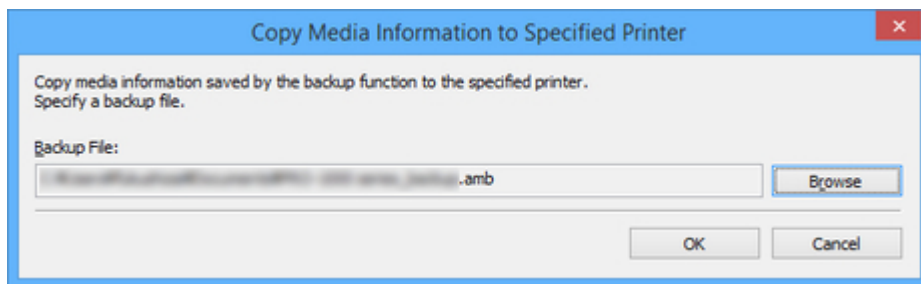


The **Open** dialog box appears.

- Select the saved media information backup file (.amb file), and then click the **Open** button.

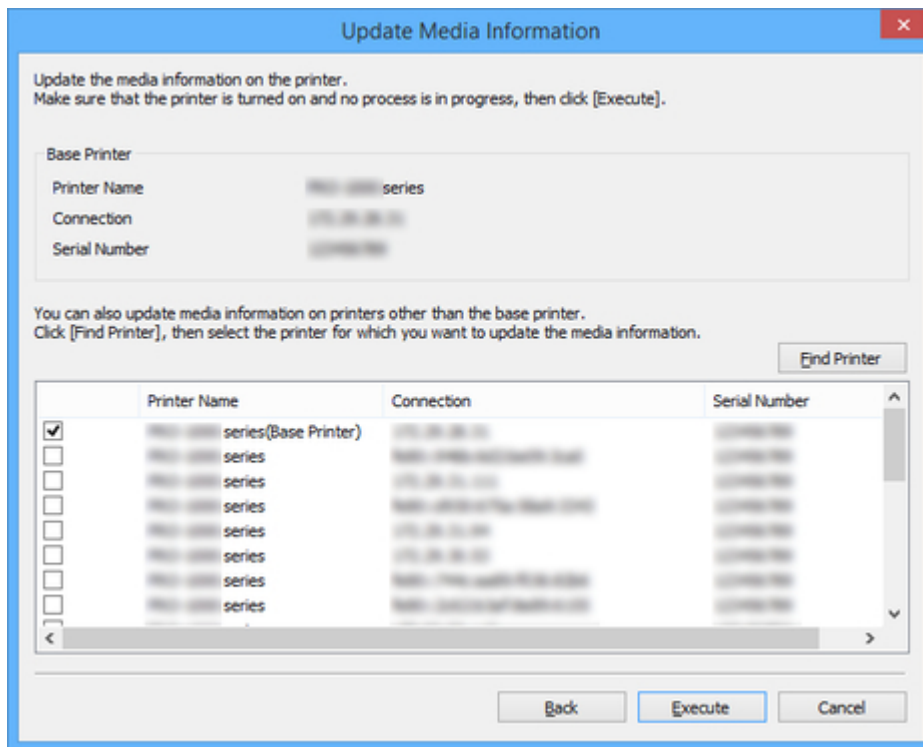


4. Click the **OK** button.



The **Update Media Information** dialog box appears.

5. From the displayed printers, select the check box of the printers for which you want to copy media information at the same time as the base printer, and then click the **Execute** button.



Important

- When you execute the copy, the media information registered in the printer being copied to will be deleted.

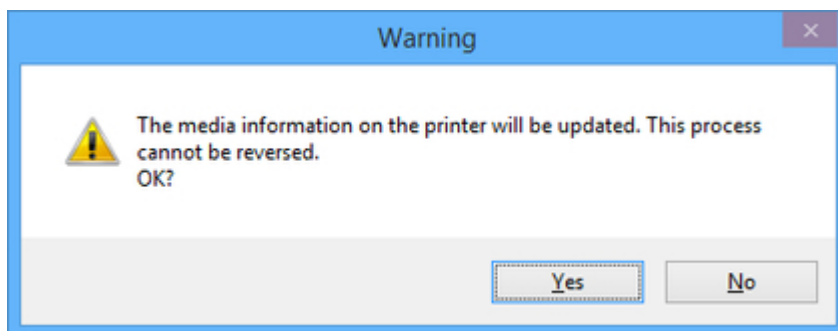
We recommend backing up the media information in advance before executing copy.

For how to back up media information, see "Back Up Base Printer Media Information" in ["Copying Media Information from the Base Printer to Another Printer"](#).

Note

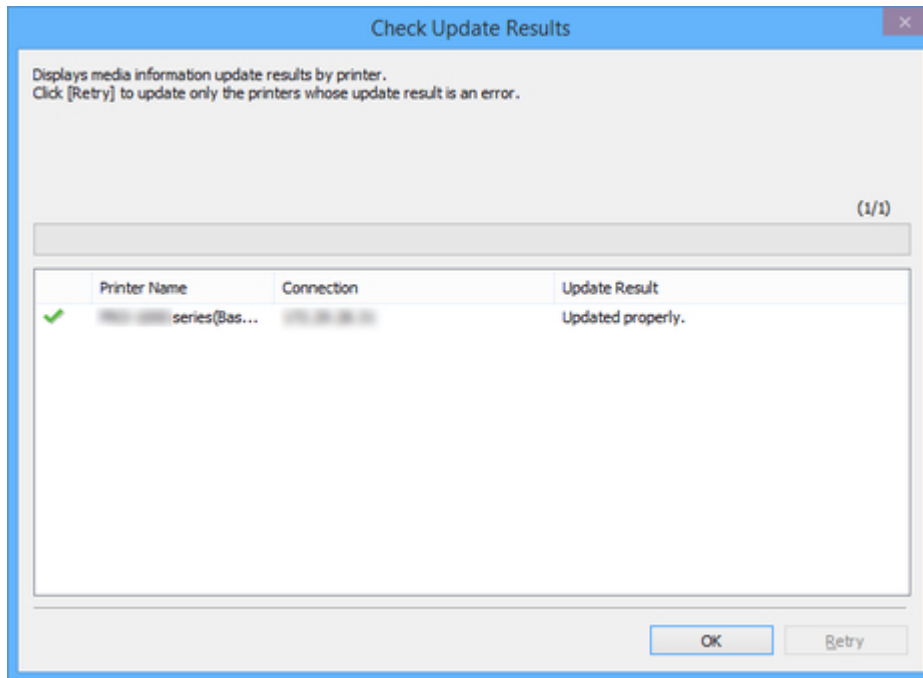
- If the printer you want to copy is not displayed, verify the state of the printer and network, and then click the **Find Printer** button.
- In addition to the base printer, the printers that are the same model as the base printer appear.
- You cannot clear the check mark for the base printer.

6. Click the **Yes** button.




The **Check Update Results** dialog box appears.


7. Verify that  mark appears to the left of the **Printer Name**, and then click the **OK** button.



Note

- Media information was not copied for printers with a  mark displayed to the left of the **Printer Name**.

Verify the state of the printer and network, and click the **Retry** button.

Media information is copied again for printers with the  mark.

The media information of the base printer is copied to the specified printers.

Editing Media Information

- [Displaying Media Information Details](#)
- [Changing the Display Order of Media Information](#)
- [Changing Media Names](#)
- [Switching Media Information to Show/Hide](#)
- [Deleting Media Information](#)

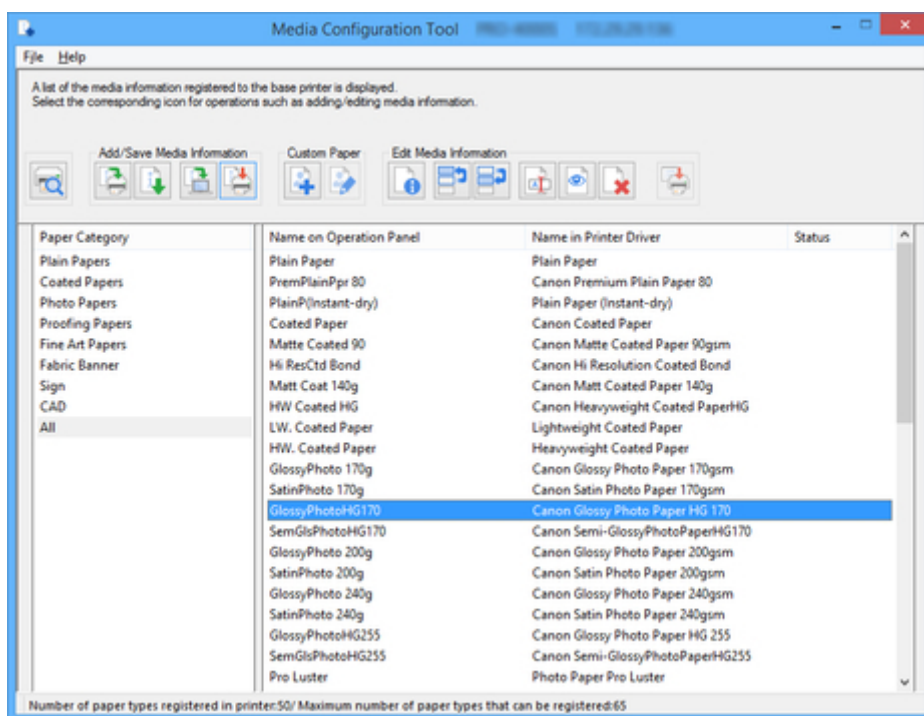
Displaying Media Information Details


Displays the media information details.

Important

- Do not attempt to print or turn the printer off while the program is communicating with the printer.

- Select the paper for which you want to check the media information details.



- Click  (Simple Paper Reference) in the **Edit Media Information** button group.

The **Simple Paper Reference** dialog box appears.

Changing the Display Order of Media Information

Change the display order of media information displayed in the printer control panel and printer driver.

Important

- Do not attempt to print or turn the printer off while the program is communicating with the printer.
Do not add or edit media information on a printer from another computer while it is being added or edited.
- We recommend backing up the media information in advance before editing media information.
For how to back up media information, see "Back Up Base Printer Media Information" in "[Copying Media Information from the Base Printer to Another Printer](#)".

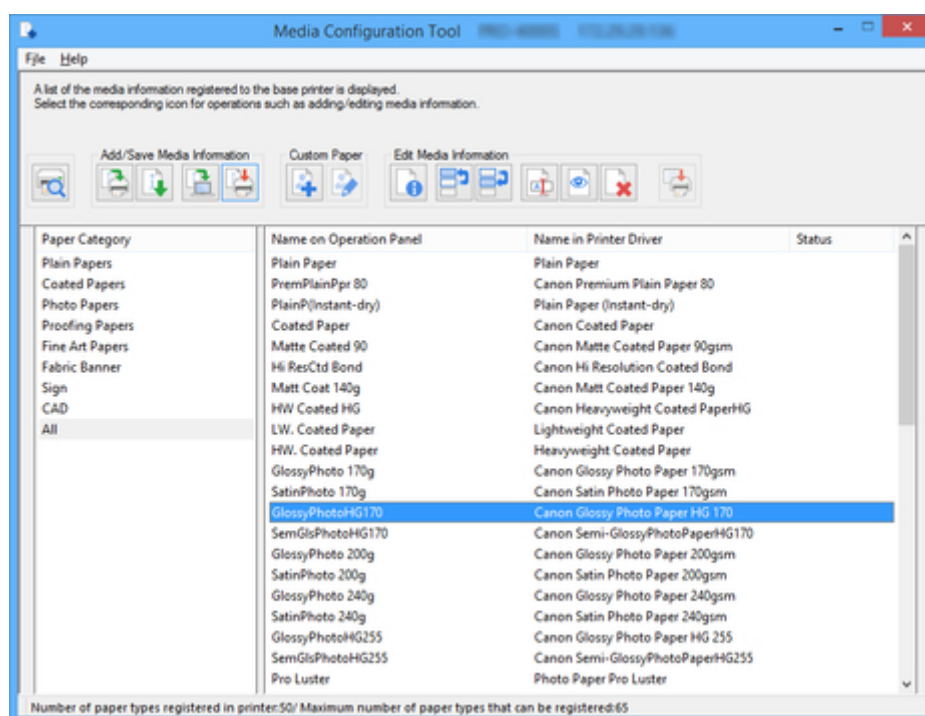
Note



- If you want to apply the same media information to another printer, make the other printer the base printer and edit or copy the media information.

■ [Changing the Base Printer](#)


■ [Copying Media Information from the Base Printer to Another Printer](#)

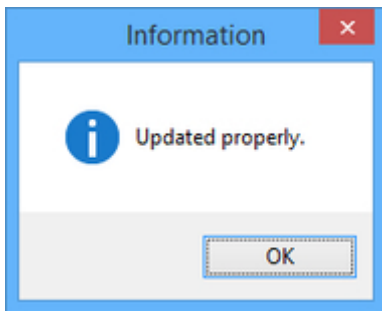
- Select the paper whose order you want to change.



- Click  (Change Display Order of Paper (Up)) or  (Change Display Order of Paper (Down)) in the **Edit Media Information** button group.

The selected paper moves one line up or down for every button click.

3. Click  (Apply Edits) in the **Edit Media Information** button group.
4. Click the **OK** button.



The updated media information is applied to the printer control panel.

Important

- To apply the media information to the printer driver, you must update the media information in the printer driver.

For details, see "Updating Media Information in Printer Driver" for your model from the Home of the Online Manual.

Changing Media Names

Change the name of the paper displayed in the printer control panel and printer driver.

Important

- Do not attempt to print or turn the printer off while the program is communicating with the printer.
Do not add or edit media information on a printer from another computer while it is being added or edited.
- We recommend backing up the media information in advance before editing media information.
For how to back up media information, see "Back Up Base Printer Media Information" in "[Copying Media Information from the Base Printer to Another Printer](#)".

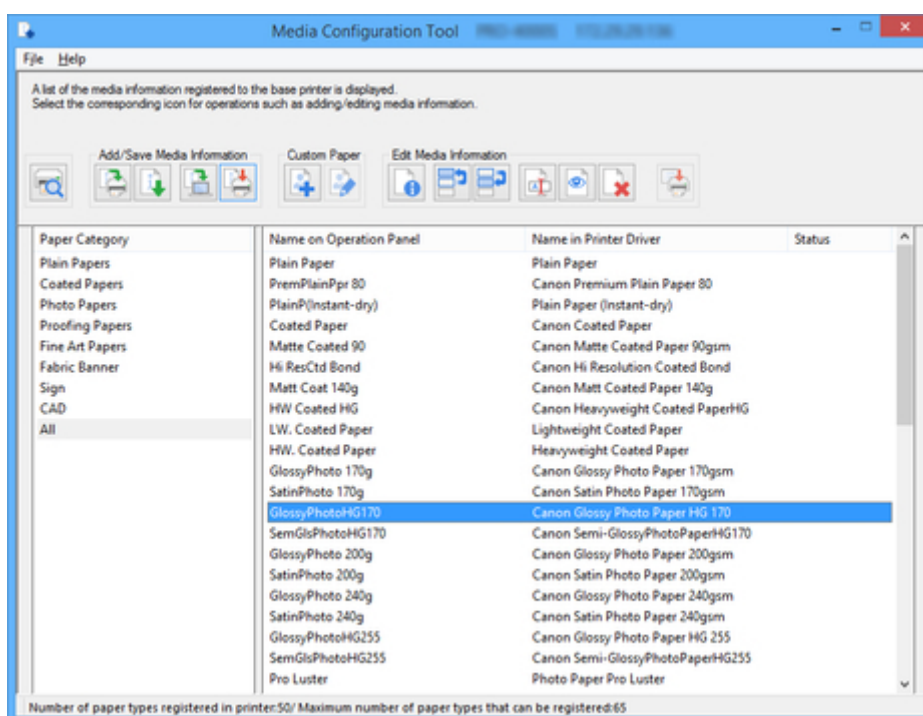
Note


- If you want to apply the same media information to another printer, make the other printer the base printer and edit or copy the media information.

■ [Changing the Base Printer](#)

■ [Copying Media Information from the Base Printer to Another Printer](#)

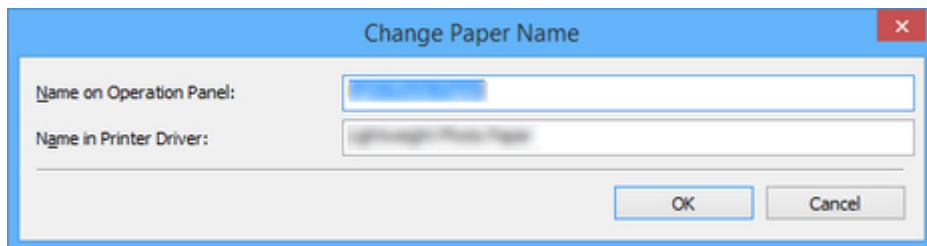
1. Select the paper whose name you want to change.



2. Click  (Change Paper Name) in the **Edit Media Information** button group.

The **Change Paper Name** dialog box appears.

3. Edit **Name on Operation Panel** and **Name in Printer Driver**, and then click the **OK** button.

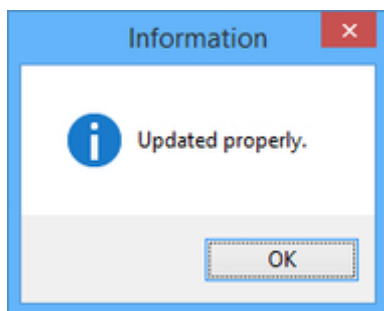


►►►Note

- The characters that can be entered for **Name in Printer Driver** and **Name on Operation Panel** are stated below.
alphanumeric, space, "-", ".", "_", "(", ")", "+", "%", ";", "/", "[", "]"
- For **Name on Operation Panel**, up to 10 double-byte characters and up to 20 single-byte characters can be entered.
- For **Name in Printer Driver**, up to 32 characters or 80 bytes may be entered.
- If the selected media is custom paper, you can edit **Paper Name (English)**.
For **Paper Name (English)** up to 20 single-byte characters can be entered.
- You cannot rename the paper with the same name as the paper registered to the standard printer.

4. Click  (Apply Edits) in the **Edit Media Information** button group.

5. Click the **OK** button.



The updated media information is applied to the printer control panel.

►►►Important

- To apply the media information to the printer driver, you must update the media information in the printer driver.
For details, see "Updating Media Information in Printer Driver" for your model from the Home of the Online Manual.

Switching Media Information to Show/Hide

Switch between showing and hiding the media information displayed in the printer control panel and printer driver.

Important

- Do not attempt to print or turn the printer off while the program is communicating with the printer.
Do not add or edit media information on a printer from another computer while it is being added or edited.

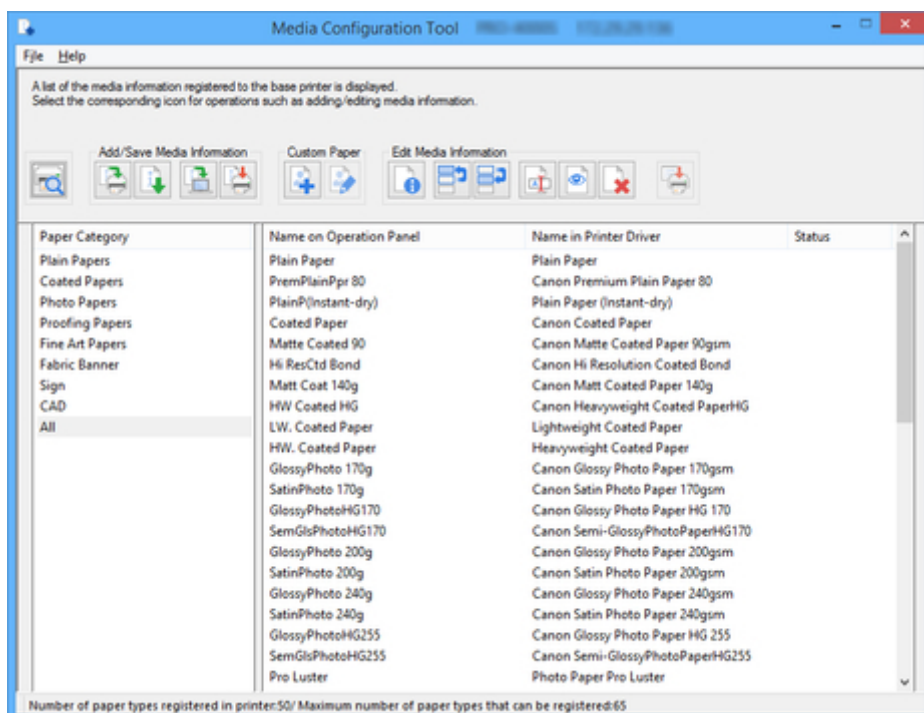
Note

- The media information is not deleted from the printer even if the media information is hidden.
- If you want to apply the same media information to another printer, make the other printer the base printer and edit or copy the media information.

■ [Changing the Base Printer](#)

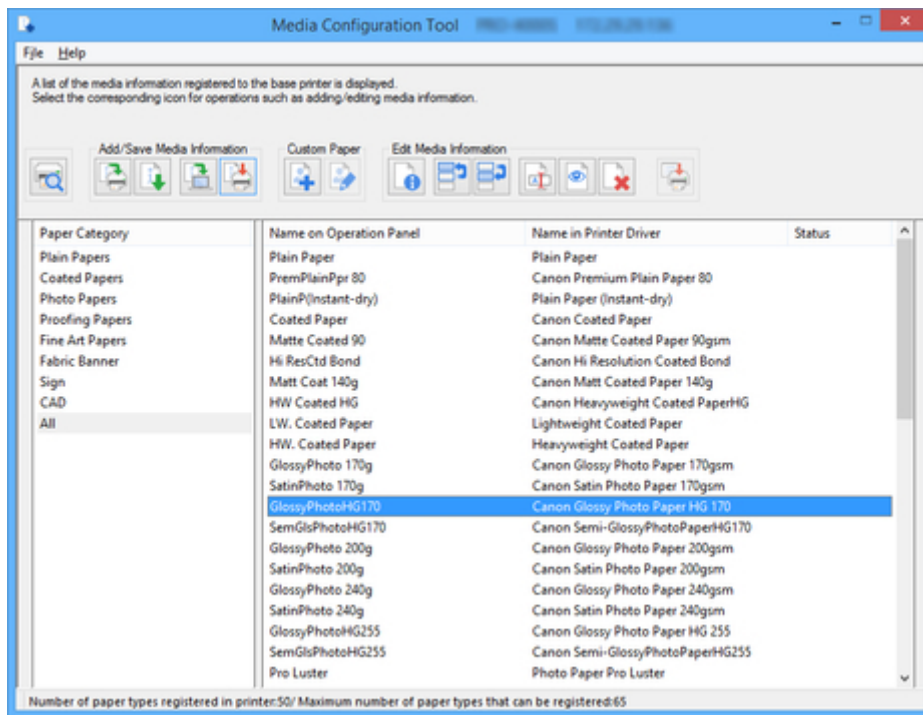
■ [Copying Media Information from the Base Printer to Another Printer](#)

1. Select the paper you want to show/hide.



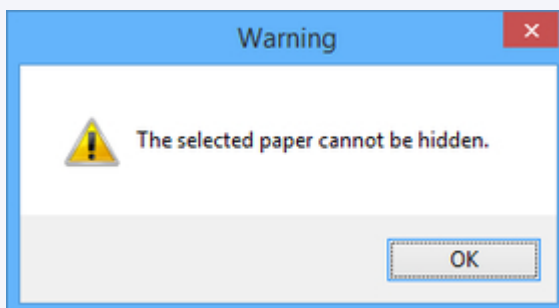
2. Click  (Show/Hide Paper) in the **Edit Media Information** button group.

The selected paper is alternately shown or hidden.



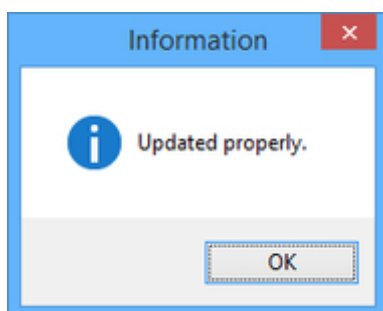
Note

- You can select multiple paper.
- The names of paper that are hidden appear grayed out in the media information list.
- Paper for which the following message appears cannot be switched between show and hide.



3. Click  (Apply Edits) in the **Edit Media Information** button group.

4. Click the **OK** button.



The updated media information is applied to the printer control panel.

Important

- To apply the media information to the printer driver, you must update the media information in the printer driver.

For details, see "Updating Media Information in Printer Driver" for your model from the Home of the Online Manual.

Deleting Media Information

Delete the printer control panel and printer driver media information.

Important

- Do not attempt to print or turn the printer off while the program is communicating with the printer.
Do not add or edit media information on a printer from another computer while it is being added or edited.
- We recommend backing up the media information in advance before editing media information.
For how to back up media information, see "Back Up Base Printer Media Information" in "[Copying Media Information from the Base Printer to Another Printer](#)".

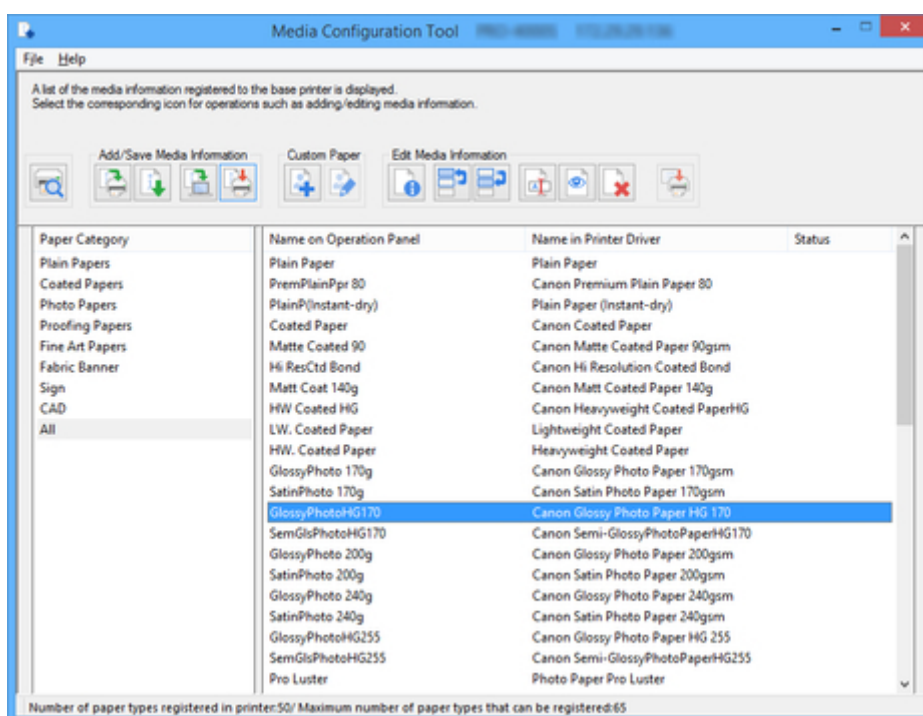
Note


- If you want to apply the same media information to another printer, make the other printer the base printer and edit or copy the media information.

■ [Changing the Base Printer](#)

■ [Copying Media Information from the Base Printer to Another Printer](#)

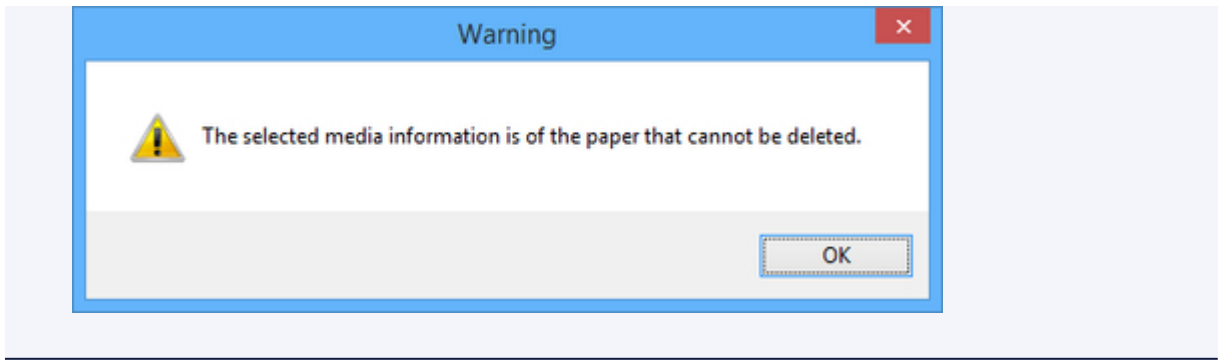
1. Select the paper that you want to delete.



2. Click  (Delete Media Information) in the **Edit Media Information** button group.

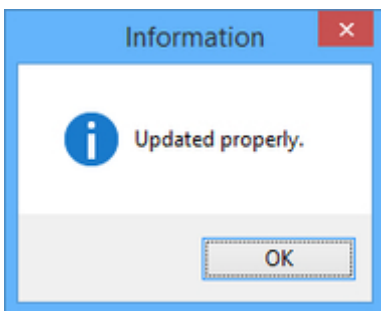
Note

- Paper for which the following message appears cannot be deleted.



3. Click  (Apply Edits) in the **Edit Media Information** button group.

4. Click the **OK** button.



The updated media information is applied to the printer control panel.

Important

- To apply the media information to the printer driver, you must update the media information in the printer driver.

For details, see "Updating Media Information in Printer Driver" for your model from the Home of the Online Manual.

Using Custom Paper

- [Adding Custom Paper](#)
- [Editing Custom Paper](#)
- [Notes on the Use of Custom Paper](#)
- [Edit Custom Paper Dialog Box](#)

Adding Custom Paper

In the Media Configuration Tool, paper created by customizing existing media information is called custom paper.

To improve the print quality and feeding of paper other than Canon genuine paper or Canon feed confirmed paper, add and edit custom paper.

To add a new custom paper to a printer, first select the media information used as its basis.

Next, specify the name of the paper, and then add it to the printer as custom paper.

After adding custom paper to the printer, edit the media information of the custom paper to obtain a high quality print result.

For details on the procedure for editing media information for custom paper, see "[Editing Custom Paper](#)."

Important


- Canon offers absolutely no guarantees regarding the print quality or paper feed properties of customer paper.
- Do not attempt to print or turn the printer off while the program is communicating with the printer.
Do not add or edit media information on a printer from another computer while it is being added or edited.
- We recommend backing up the media information in advance before adding or editing media information.

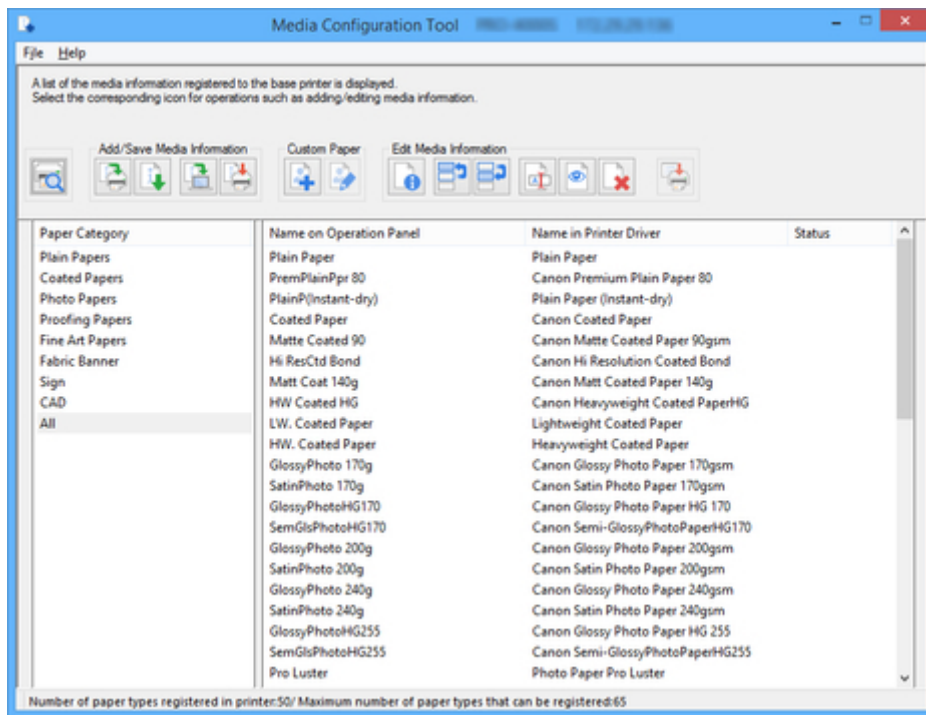
For how to back up media information, see "Back Up Base Printer Media Information" in "[Copying Media Information from the Base Printer to Another Printer](#)".

- The paper that can be used as the basis for custom paper is limited.

The **Create Custom Paper** dialog box appears for the paper to be the basis of the custom paper.

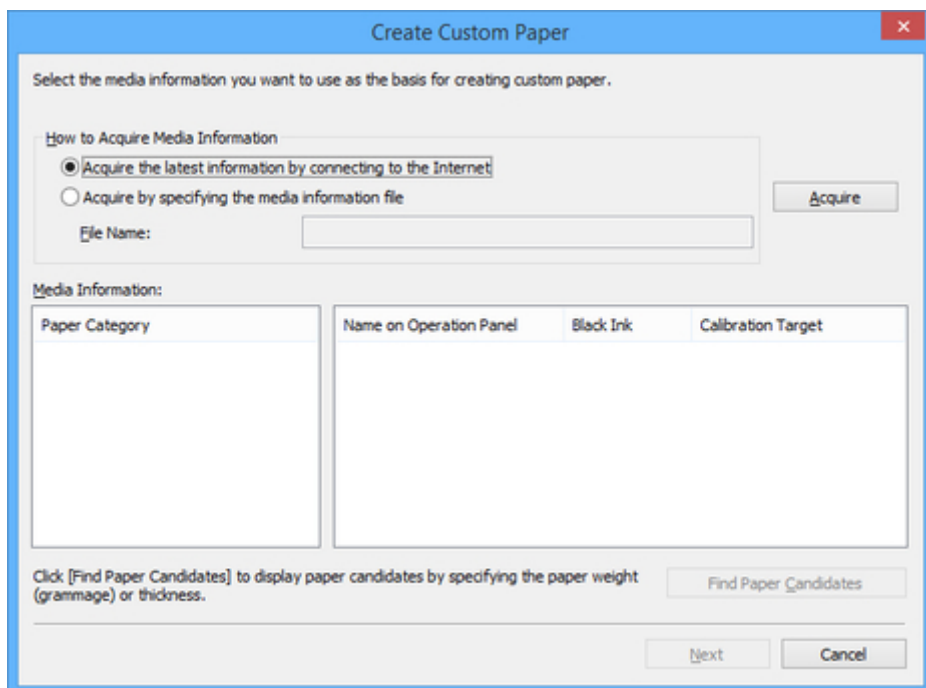
- For the paper specifications that can be added as custom paper and the basis paper specifications, see the following pages for your model from the Home of the Online Manual.
 - Model that supports roll paper
 - "Using Paper Other Than Genuine Paper and feed confirmed Paper"
 - "Paper Information List"
 - Model that does not support roll paper
 - "Media Types You Can Use"
 - "Paper Settings on the Printer Driver and the Printer (Media Types)"

1. Click  (Create Custom Paper) in the **Custom Paper** button group.



The **Create Custom Paper** dialog box appears.

2. Select **Acquire the latest information by connecting to the Internet**, and then click the **Acquire** button.

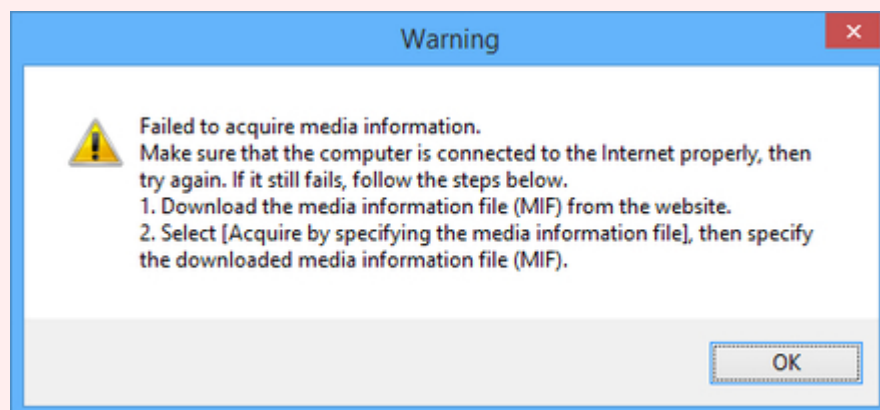


Important

- If the following message appears, the media information file cannot be downloaded from the Internet.

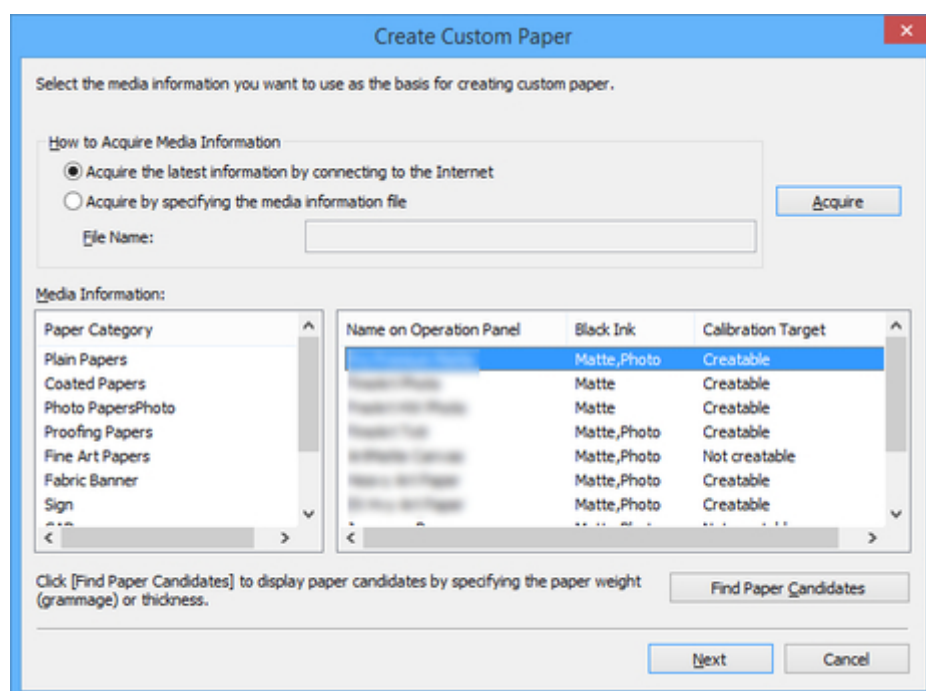
Obtain the media information file from the Canon website using a computer connected to the Internet. You cannot obtain a media information file exported with Media Configuration Tool (See "[Exporting Media Information](#)").

Specify the media information file that you obtained by selecting **Acquire by specifying the media information file**, clicking the **Acquire** button, and specifying the file in the **Open** dialog box.



The possible media information for the custom paper appears.

3. Select the media information that will be the basis for custom paper, and then click the **Next** button.



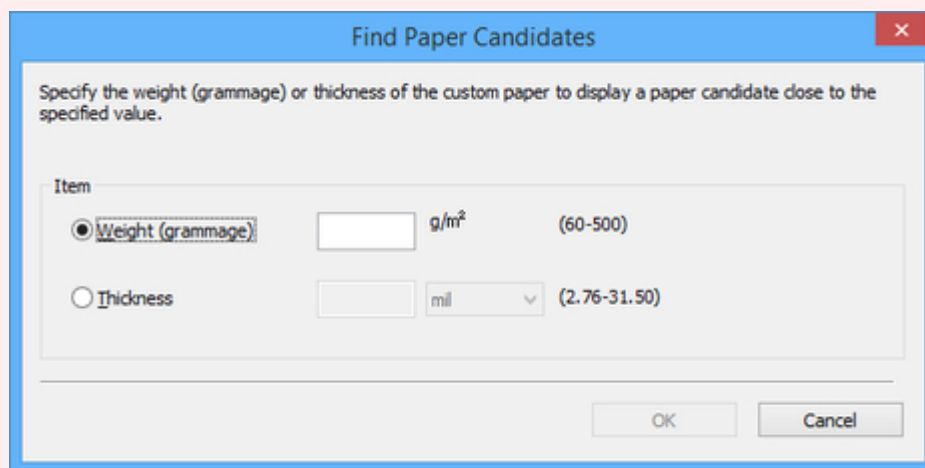
»»» Important

- Select the material and thickness that you think are the closest to the custom paper you are adding.
- If you do not know the media information that is the basis of the custom paper, do one of the following.

- Select the paper category, and from **Name on Operation Panel**, select the media information called **General Purpose**.

Depending on the selected category, there might not be media information called **General Purpose**.

- In **Paper Category**, select any option other than **All**, and then click the **Find Paper Candidates** button. In the **Find Paper Candidates** dialog box, set **Weight (grammage)** or **Thickness**, and then click the **OK** button.

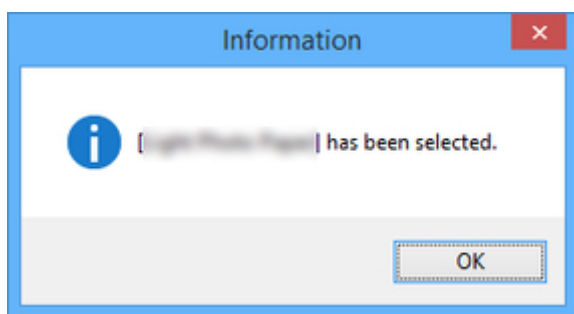


The appropriate media information is selected automatically from the selected category.

►►►Note

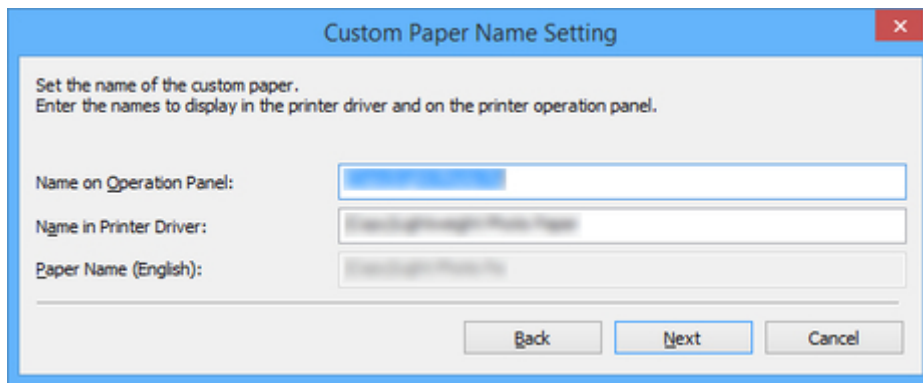
- The calibration target for executing color calibration cannot be created for custom paper which is added using a base paper where **Not creatable** is displayed in **Calibration Target**.

4. Click the **OK** button.



The **Custom Paper Name Setting** dialog box appears.

5. Enter an arbitrary name to display in the printer control panel and printer driver, and then click the **Next** button.



Custom Paper Name Setting

Set the name of the custom paper.
Enter the names to display in the printer driver and on the printer operation panel.

Name on Operation Panel:

Name in Printer Driver:

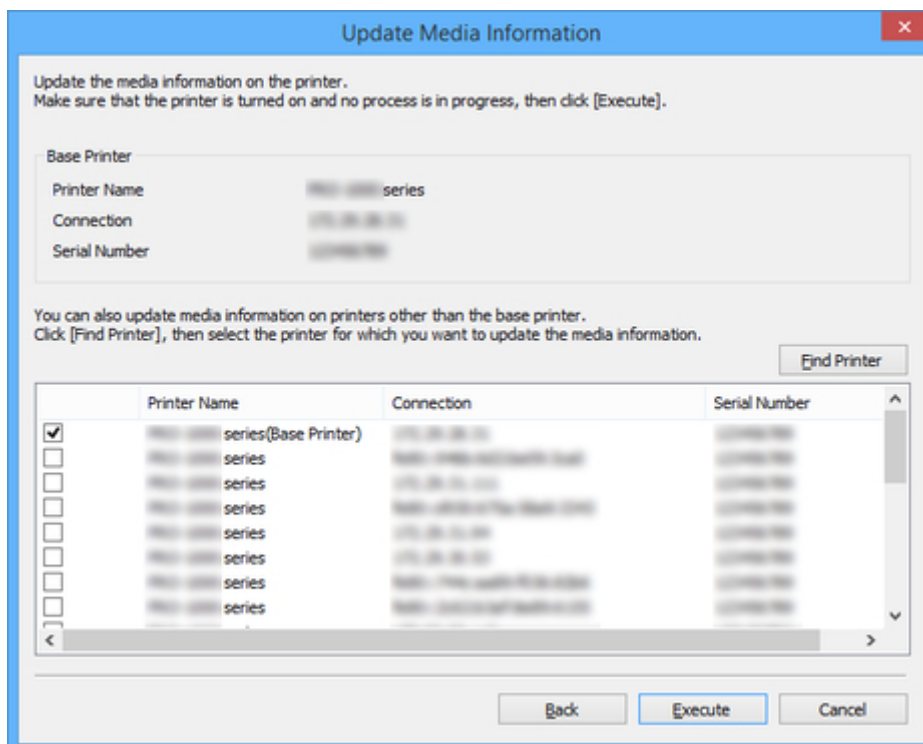
Paper Name (English):

>>> Note

- The characters that can be entered for **Name in Printer Driver** and **Name on Operation Panel** are stated below.
alphanumeric, space, "-", ".", "_", "(", ")", "+", "%", ",", "/", "[", "]"
- For **Name on Operation Panel**, up to 10 double-byte characters and up to 20 single-byte characters can be entered.
- For **Name in Printer Driver**, up to 32 characters or 80 bytes may be entered.
- For **Paper Name (English)** up to 20 single-byte characters can be entered.
- You cannot rename the paper with the same name as the paper registered to the standard printer.

The **Update Media Information** dialog box appears.

6. From the displayed printers, select the check box of the printers to which you want to add custom paper at the same time as the base printer, and click the **Execute** button.



Update Media Information

Update the media information on the printer.
Make sure that the printer is turned on and no process is in progress, then click [Execute].

Base Printer

Printer Name:

Connection:

Serial Number:

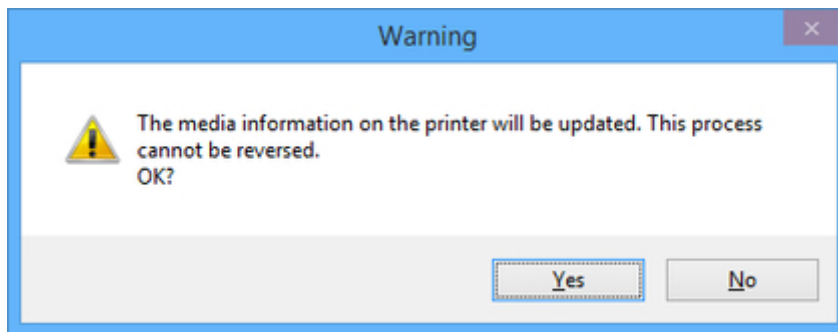
You can also update media information on printers other than the base printer.
Click [Find Printer], then select the printer for which you want to update the media information.

	Printer Name	Connection	Serial Number
<input checked="" type="checkbox"/>	HP-1000 series(Base Printer)	USB	123456789
<input type="checkbox"/>	HP-1000 series	HP-1000 series	123456789
<input type="checkbox"/>	HP-1000 series	USB	123456789
<input type="checkbox"/>	HP-1000 series	HP-1000 series	123456789
<input type="checkbox"/>	HP-1000 series	USB	123456789
<input type="checkbox"/>	HP-1000 series	HP-1000 series	123456789
<input type="checkbox"/>	HP-1000 series	USB	123456789
<input type="checkbox"/>	HP-1000 series	HP-1000 series	123456789
<input type="checkbox"/>	HP-1000 series	USB	123456789
<input type="checkbox"/>	HP-1000 series	HP-1000 series	123456789

►►►Note

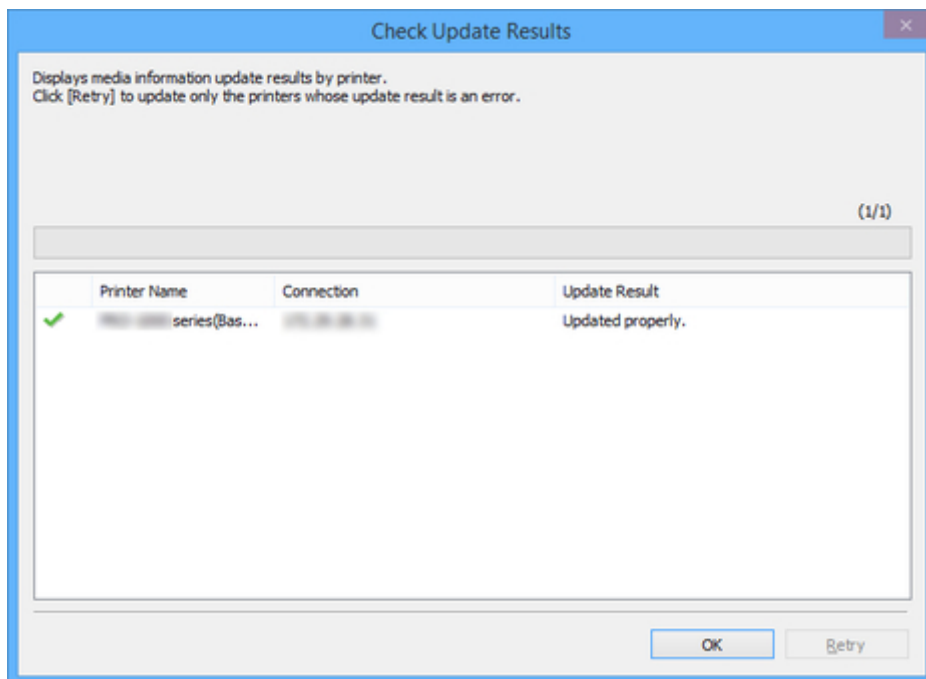
- If the printer you want to add is not displayed, verify the state of the printer and network, and then click the **Find Printer** button.
- In addition to the base printer, the printers that are the same model as the base printer appear.
- You cannot clear the check mark for the base printer.

7. Click the **Yes** button.

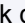



The **Check Update Results** dialog box appears.

8. Verify that  mark appears to the left of the **Printer Name**, and then click the **OK** button.



►►►Note

- Custom paper was not added for printers with a  mark displayed to the left of the **Printer Name**. Verify the state of the printer and network, and click the **Retry** button. Custom paper will be added again for printers with the  mark.

The custom paper is added to the printer.

Important

- After adding custom paper, we recommend adjusting the position of the printhead for the custom paper that you added.

For how to adjust the printhead position, see "Adjustments for Better Print Quality" for your model from the Home of the Online Manual.

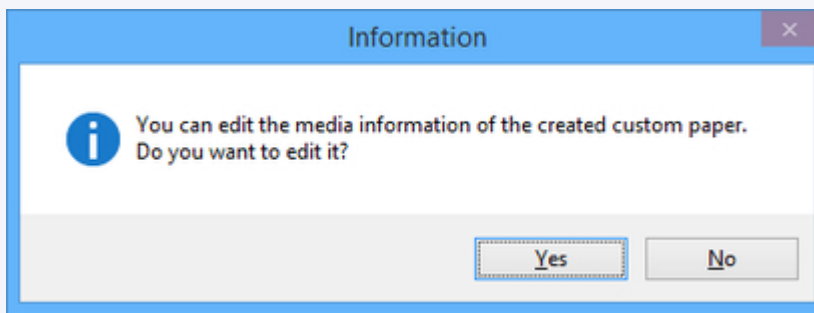
- To apply the added custom paper to the printer driver, you must update the media information in the printer driver.

For details, see "Updating Media Information in Printer Driver" for your model from the Home of the Online Manual.

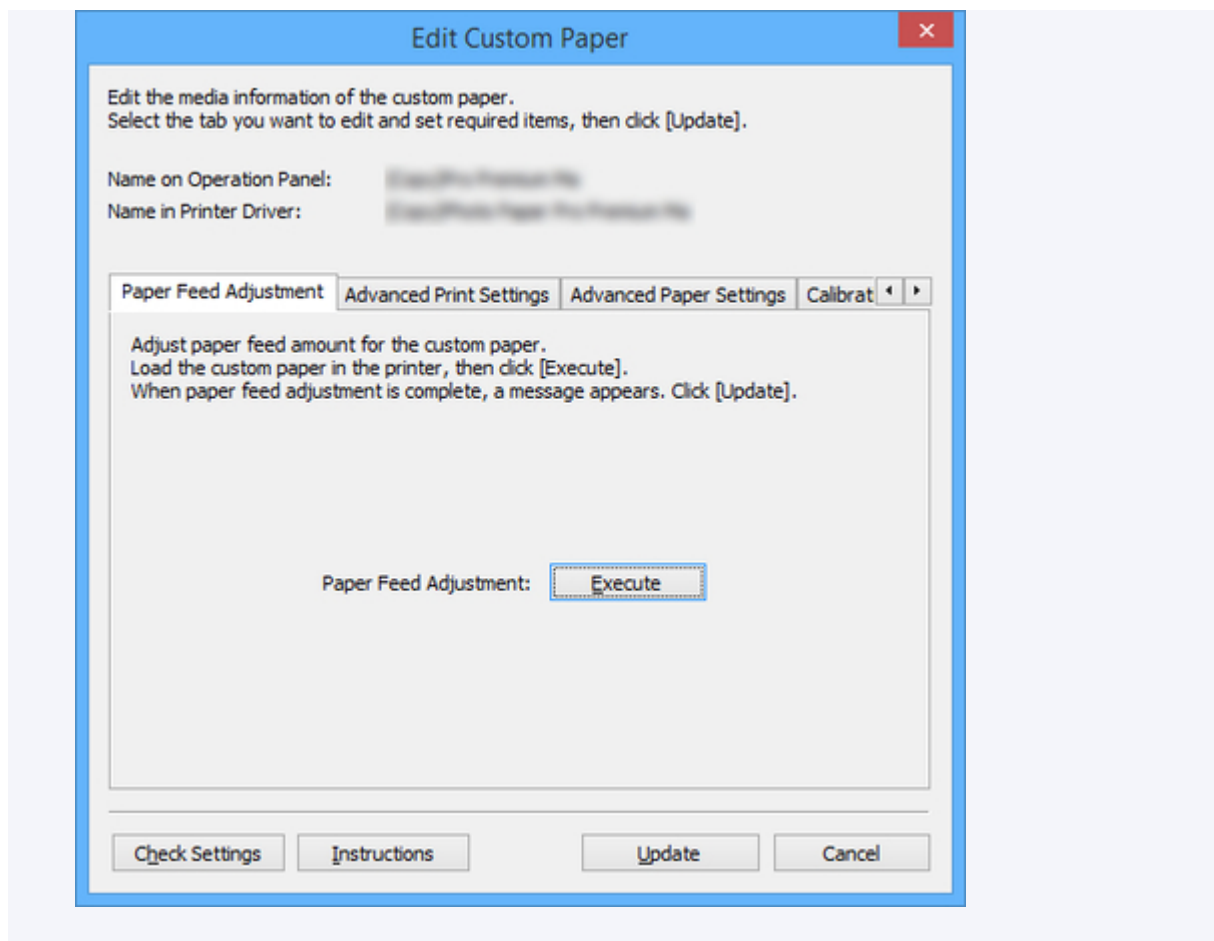
Note

- After that, the custom paper you added must be edited. For details on the procedure for editing custom paper, see "[Editing Custom Paper](#)."

To edit it immediately, click the **Yes** button.



Click the **Yes** button to display the **Edit Custom Paper** dialog box. Perform the steps from step 3 in "[Editing Custom Paper](#)".



Editing Custom Paper

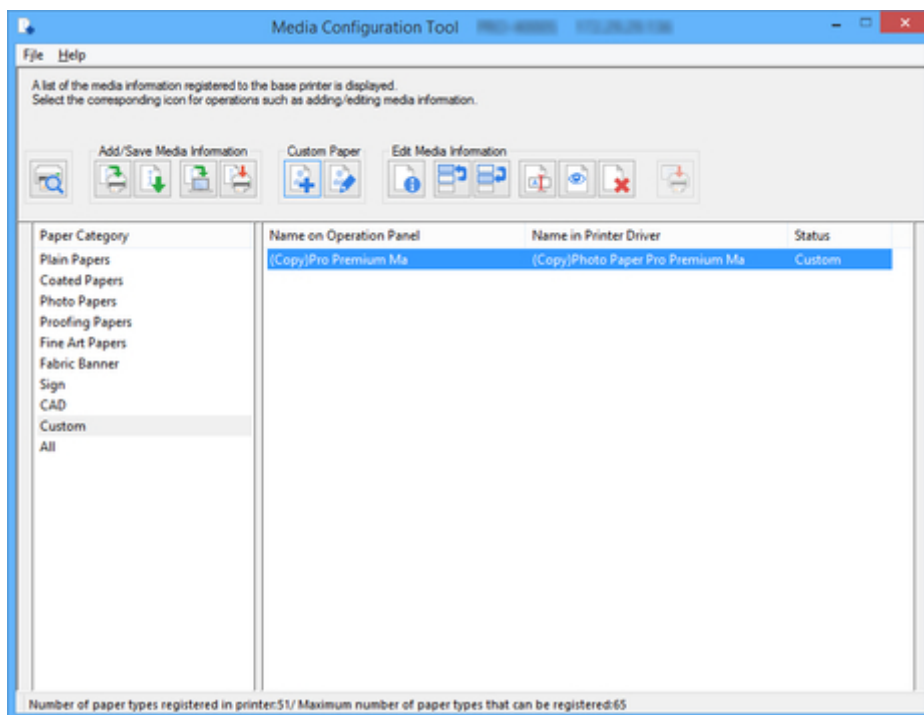
Edit the media information of the custom paper you added to the printer to obtain a high quality print result.


For details on the procedure for adding custom paper to the printer, see "[Adding Custom Paper](#)."

Important

- Do not attempt to print or turn the printer off while the program is communicating with the printer.
Do not add or edit media information on a printer from another computer while it is being added or edited.
- We recommend backing up the media information in advance before editing media information.
For how to back up media information, see "Back Up Base Printer Media Information" in "[Copying Media Information from the Base Printer to Another Printer](#)".

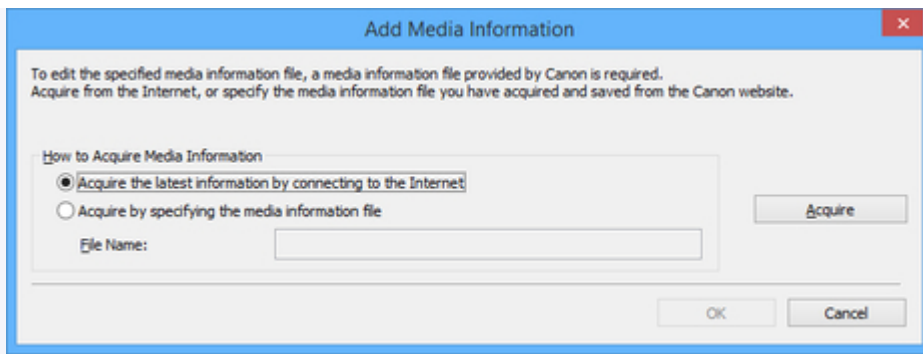
1. Select the custom paper that you want to edit.



2. Click  (Edit Custom Paper) in the **Custom Paper** button group.

Note

- If no media information file has ever been obtained from the Internet or the Canon website after starting Media Configuration Tool, the following dialog box appears.



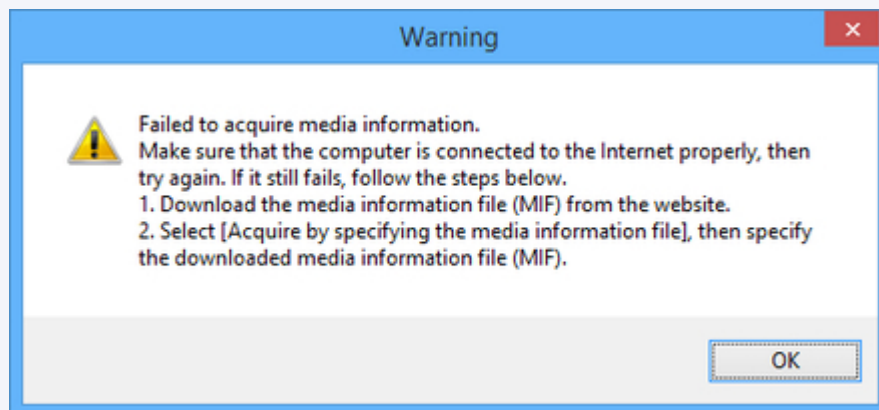
Select **Acquire the latest information by connecting to the Internet**, and then click the **Acquire** button.

After the media information has been obtained, click the **OK** button.

- If the following message appears, the media information file cannot be downloaded from the Internet.

Obtain the media information file from the Canon website using a computer connected to the Internet.

Specify the media information file that you obtained by selecting **Acquire by specifying the media information file**, clicking the **Acquire** button, and specifying the file in the **Open** dialog box.



The **Edit Custom Paper** dialog box appears.

>>> Important

- Edit the custom paper in the **Edit Custom Paper** dialog box in the order shown below.

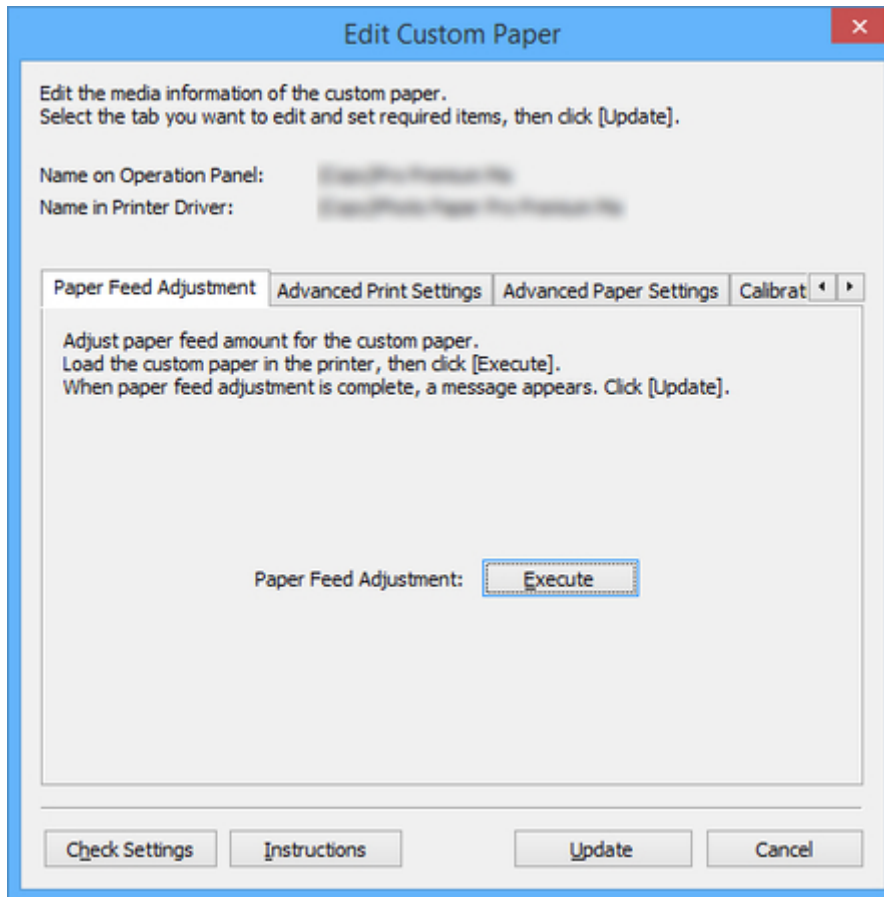
If you do not follow this order, you may need to configure the settings again.

1. **Paper Feed Adjustment** sheet
2. **Advanced Print Settings** sheet
3. **Advanced Paper Settings** sheet
4. **Calibration Target** sheet
5. **ICC Profile** sheet

- Always perform paper feed adjustment. Set other items as needed.

- After setting the **Calibration Target** and **ICC Profile** sheets, changes to the ink usage on the **Advanced Paper Settings** sheet will disable the settings on the **Calibration Target** and **ICC Profile** sheets. In this case, set the **Calibration Target** and **ICC Profile** sheets again.
- After you have selected the settings, always click the **Update** button.

3. In the **Edit Custom Paper** dialog box, edit the media information for custom paper.

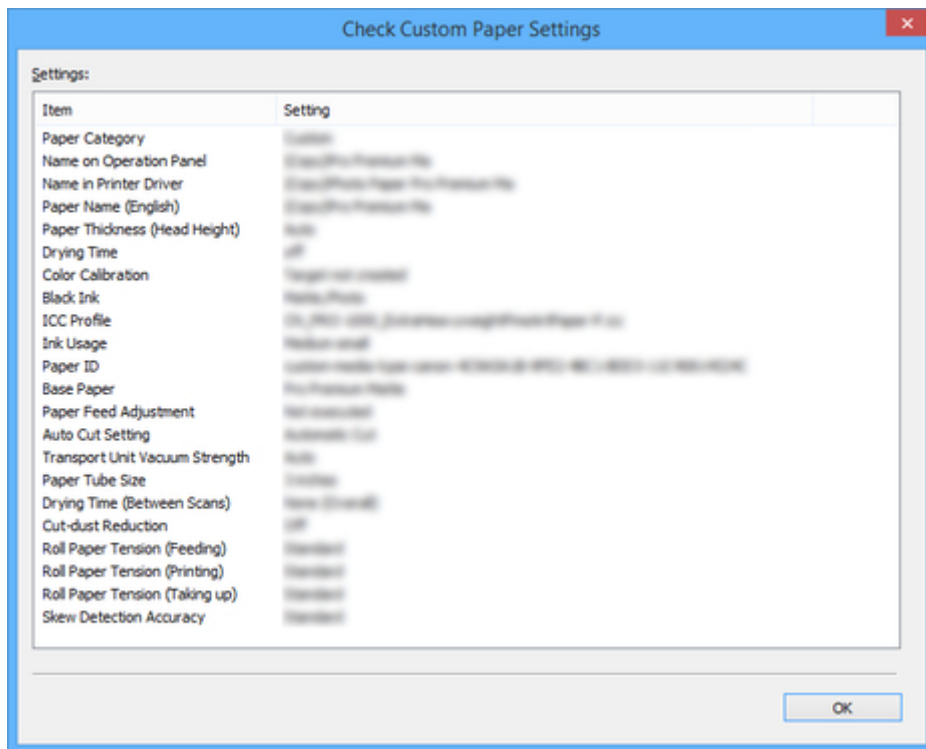


For details on the settings, see "[Edit Custom Paper Dialog Box](#)".

4. Click the **Check Settings** button.

The **Check Custom Paper Settings** dialog box appears.

5. Verify the settings of the custom paper, and then click the **OK** button.

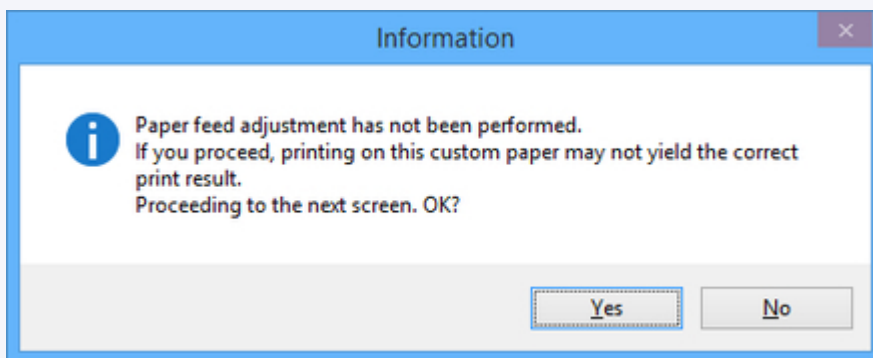


- In the **Edit Custom Paper** dialog box, click the **Update** button.

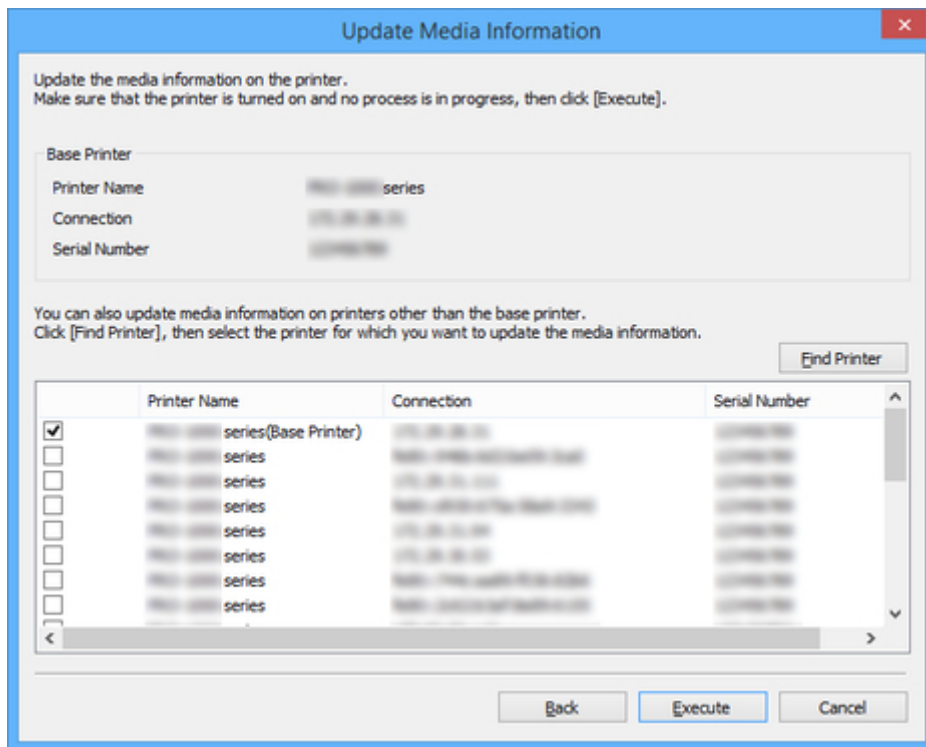
The **Update Media Information** dialog box appears.

▶▶▶Note

- If paper feed adjustment is not performed, the following message appears.



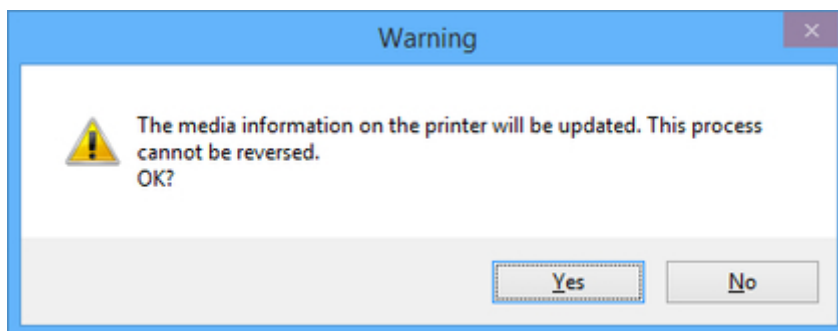
- From the displayed printers, select the check box of the printers for which you want to update media information for custom paper at the same time as the base printer, and then click the **Execute** button.



»»»Note

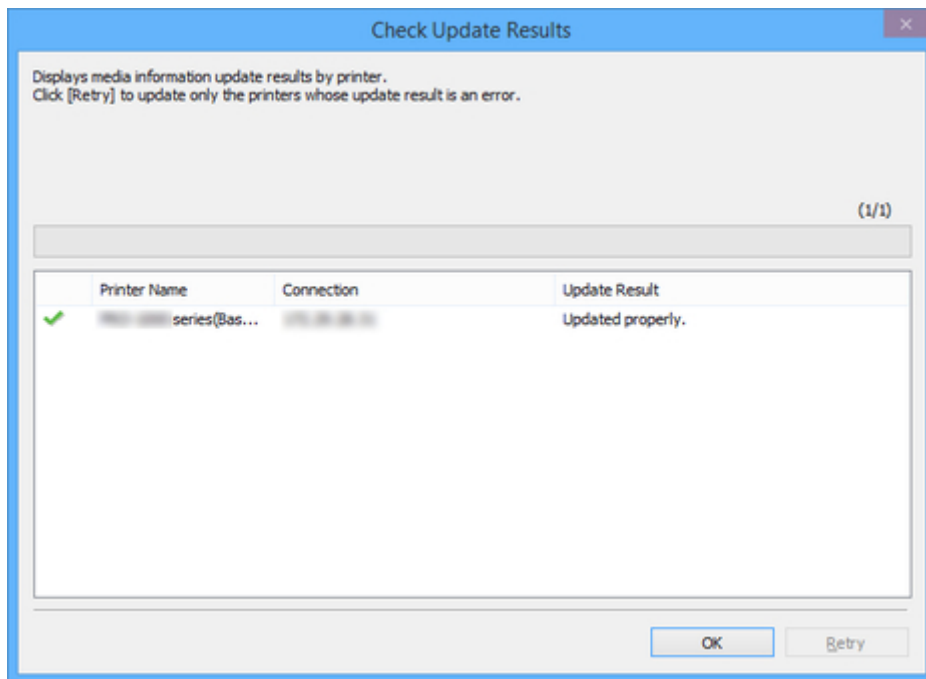
- If the printer you want to update is not displayed, verify the state of the printer and network, and then click the **Find Printer** button.
- In addition to the base printer, the printers that are the same model as the base printer appear.
- You cannot clear the check mark for the base printer.

8. Click the **Yes** button.



The **Check Update Results** dialog box appears.

9. Verify that  mark appears to the left of the **Printer Name**, and then click the **OK** button.



►►►Note

- Custom paper media information was not updated for printers with a **✗** mark displayed to the left of the **Printer Name**.

Verify the state of the printer and network, and click the **Retry** button.

Custom paper media information will be updated again for printers with the **✗** mark.

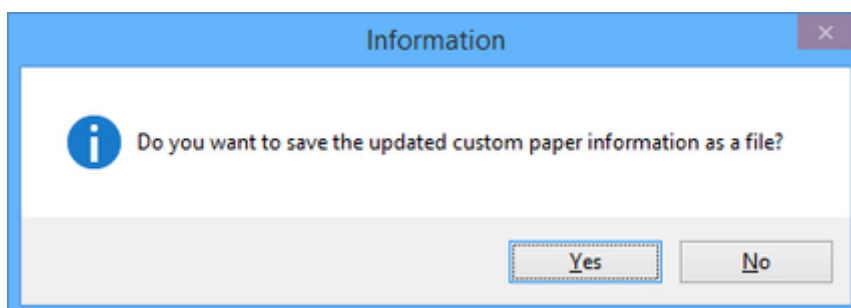
The edited media information for the custom paper is applied to the printers.

►►►Important

- To apply the media information to the printer driver, you must update the media information in the printer driver.

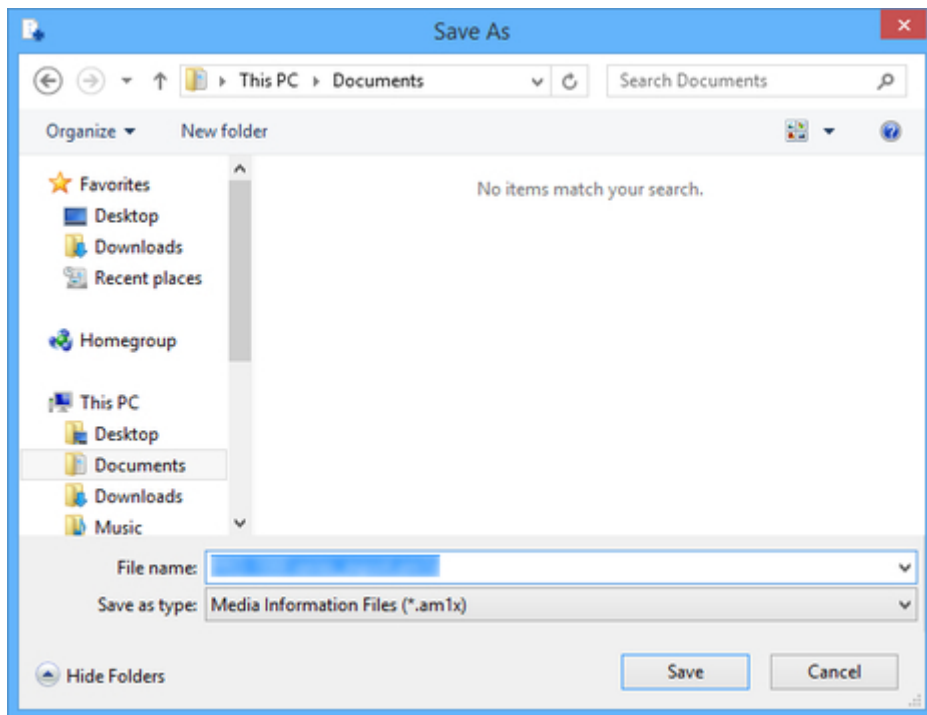
For details, see "Updating Media Information in Printer Driver" for your model from the Home of the Online Manual.

10. Click the **Yes** button.



The **Save As** dialog box appears.

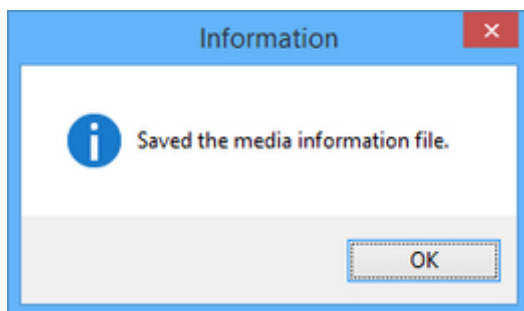
11. Specify the folder where you want to save the media information file, and click the **Save** button.



►►►Note

- You can change the file name by selecting and editing the file name.
- For custom paper where a calibration target has been created, the calibration target information is also exported to the file.

12. Click the **OK** button.



The media information file (.am1x file) for custom paper is saved.

Notes on the Use of Custom Paper

When you add custom paper to a printer, keep the following points in mind.

Cutter

- Depending on the paper, there are types that cannot be cut by the cutter unit, and types that speed deterioration of the blade and cause damage to the cutter. For thick paper and hard paper, do not use the cutter unit, and instead cut the roll paper using scissors after printing.

In this case, set **Auto Cut Setting** to **User Cut** on the **Advanced Print Settings** sheet in the **Edit Custom Paper** dialog box.

▶▶▶Note

- If the cutter is damaged, contact your Canon dealer for assistance.
- For details on how to cut roll paper, see "Specifying the Cutting Method for Rolls" for your model from the Home of the Online Manual.

Printhead

- If the printhead rubs against the paper when printing, the printhead may be damaged. If the printhead rubs against the paper, configure **Transport Unit Vacuum Strength** on the **Advanced Paper Settings** sheet in the **Edit Custom Paper** dialog box as follows.
 - For paper-based media such as Heavyweight Coated Paper
Set to **Medium-strong** or **Strong**.
 - For film-based media such as CAD Tracing Paper
Set to **Standard**, **Medium-strong**, or **Strong**.
 - For thin paper of thickness 0.004 inch (0.1 mm) or less
Set to **Weak**.

▶▶▶Note

- If the printhead still rubs even after changing the **Transport Unit Vacuum Strength**, set **Paper Thickness (Head Height)** to be higher on the **Advanced Paper Settings** sheet in the **Edit Custom Paper** dialog box.
- For details on how to handle printhead rubbing, see "Paper rubs against the printhead" for your model from the Home of the Online Manual.

Print Quality

- If the edges of images are blurry, set the **Transport Unit Vacuum Strength** to be weaker on the **Advanced Paper Settings** sheet in the **Edit Custom Paper** dialog box.
- If lines are warped or scratched, lower the setting in the **Paper Thickness (Head Height)** on the **Advanced Paper Settings** sheet in the **Edit Custom Paper** dialog box.

- If the amount of ink used is too much, wrinkles may appear and the ink may bleed in the printed material. Furthermore, if the amount of ink used is too little, color production may be poor and lines may become scratched.

In this case, change the ink usage on the **Advanced Paper Settings** sheet in the **Edit Custom Paper** dialog box.

- If horizontal stripes with different color tones appear in the printed material, adjust the paper feed on the **Paper Feed Adjustment** sheet in the **Edit Custom Paper** dialog box.

If paper feed adjustment has already been executed, execute paper feed fine tuning from the printer control panel and fine tune the amount of paper feed.

Note

- For details on paper feed fine tuning, see "Fine-Tuning Paper Feed Amount" for your model from the Home of the Online Manual.
- If horizontal stripes still appear even after executing paper feed fine tuning, see "Banding in different colors occurs" for your model from the Home of the Online Manual.

- If you cannot obtain sufficiently high print quality, change the ink usage or change the media type used as the basis for the custom paper.
- If you use glossy photo paper or glossy paper, select a paper that uses photo ink for black ink as the paper used as the basis for the custom paper.

The types of black ink used are displayed on the right side of each media type in the **Create Custom Paper** dialog box.

Note

- For details on print quality problems, see "Print Results Are Unsatisfactory" or "Problems with the printing quality" for your model from the Home of the Online Manual.

Calibration Target

- To increase the precision of the calibration target, we recommend executing Common Calibration using Canon genuine paper or Canon feed confirmed paper in advance.

Color Tone

- If the color tone needs to be adjusted, provide an ICC profile that matches the paper you are using, and then select that ICC profile on the **ICC Profile** sheet of the **Edit Custom Paper** dialog box.

Edit Custom Paper Dialog Box

You can edit the media information for custom paper in the **Edit Custom Paper** dialog box.

Important

- Edit the custom paper in the **Edit Custom Paper** dialog box in the order shown below.
If you do not follow this order, you may need to configure the settings again.
 1. **Paper Feed Adjustment** sheet
 2. **Advanced Print Settings** sheet
 3. **Advanced Paper Settings** sheet
 4. **Calibration Target** sheet
 5. **ICC Profile** sheet
- Always perform paper feed adjustment. Set other items as needed.
- After setting the **Calibration Target** and **ICC Profile** sheets, changes to the ink usage on the **Advanced Paper Settings** sheet will disable the settings on the **Calibration Target** and **ICC Profile** sheets. In this case, set the **Calibration Target** and **ICC Profile** sheets again.
- After you have selected the settings, always click the **Update** button.

1. Paper Feed Adjustment sheet

The screenshot shows the 'Edit Custom Paper' dialog box with the 'Paper Feed Adjustment' tab selected. The dialog has a blue title bar and a red close button. Inside, there's a text area with instructions: 'Edit the media information of the custom paper. Select the tab you want to edit and set required items, then click [Update].'. Below this are two text fields: 'Name on Operation Panel:' and 'Name in Printer Driver:', both containing placeholder text. A tab bar at the bottom shows 'Paper Feed Adjustment', 'Advanced Print Settings', 'Advanced Paper Settings', and 'Calibration'. The 'Paper Feed Adjustment' tab is active, showing instructions: 'Adjust paper feed amount for the custom paper. Load the custom paper in the printer, then click [Execute]. When paper feed adjustment is complete, a message appears. Click [Update].'. At the bottom of this tab is a 'Paper Feed Adjustment:' label and an 'Execute' button. At the very bottom of the dialog are four buttons: 'Check Settings', 'Instructions', 'Update', and 'Cancel'.

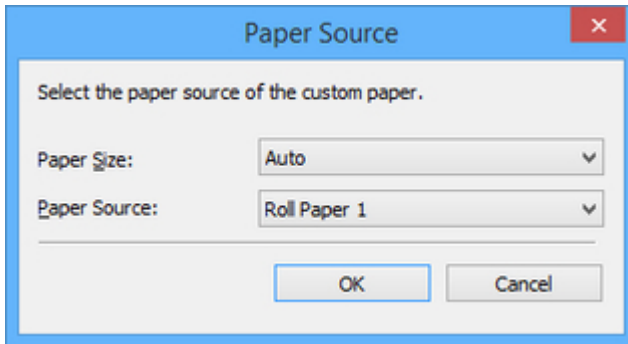
Important

- If **Paper Feed Adjustment** is not executed, horizontal stripes with different color tones may appear in the printed material. Execute paper feed adjustment each time you add a custom paper. This does not need to be executed for each paper source.

1. Click the **Execute** button.

The **Paper Source** dialog box appears.

2. Select the paper size of the custom paper and paper source where the custom paper is loaded.



Important

- The paper sources that can be loaded vary depending on the custom paper.

3. Load the custom paper in the paper source you selected.

Important

- Do not load paper that is curled or that has already been printed on.

4. Select the custom paper set on the printer control panel.
5. Click the **OK** button.

Note

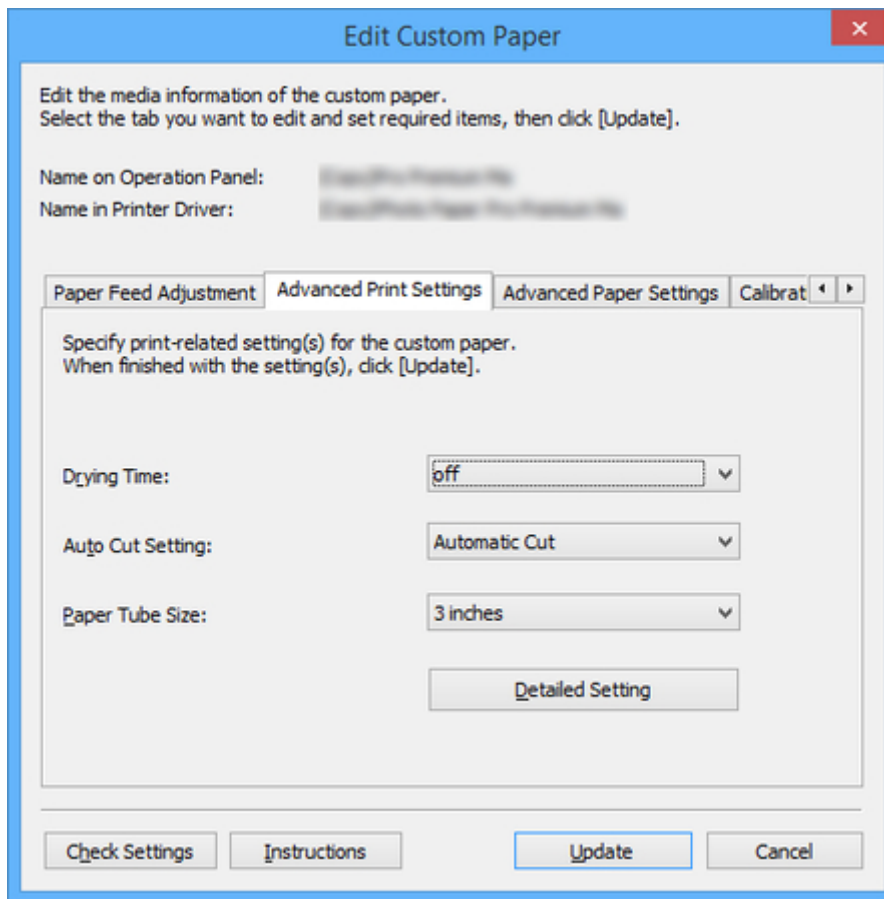
- Paper feed adjustment takes approximately 10 minutes to complete.

The adjustment pattern is printed, and the paper feed is automatically adjusted based on the printing result.

Important

- Check that there is no paper left on the ejection guide.

2. Advanced Print Settings sheet



- Depending on your model, some settings may not appear.

Specify the time that the printer waits for ink to dry. For paper where the ink does not dry well, specify the drying time.

Ejects immediately after printing finishes.

Soon after printing finishes, the next page will start to print.

Ejects after the specified time has elapsed after printing finishes.

The next page will start to print after the specified time has elapsed after the previous printing.

- Drying time applies only to roll paper on models that support roll paper. This does not apply to cut paper.

Auto Cut Setting

Configures the method for cutting roll paper when it is ejected after printing.

Automatic Cut

Roll paper is automatically cut by the cutter unit.

Eject Cut

When the printer touchscreen is operated, the roll paper is cut by the cutter unit. Select this option if you do not want the printed material to drop immediately after printing, for example, in order to wait for the ink to dry.

User Cut

Cutting is not performed by the cutter unit. Cut the roll paper using scissors after each sheet. Select this for paper that cannot be cut by the cutter unit.

Important

- Depending on the paper, there are types that cannot be cut by the cutter unit, and types that speed deterioration of the blade and cause damage to the cutter. For thick paper and hard paper, do not use the cutter unit, and instead cut the roll paper using scissors after printing.

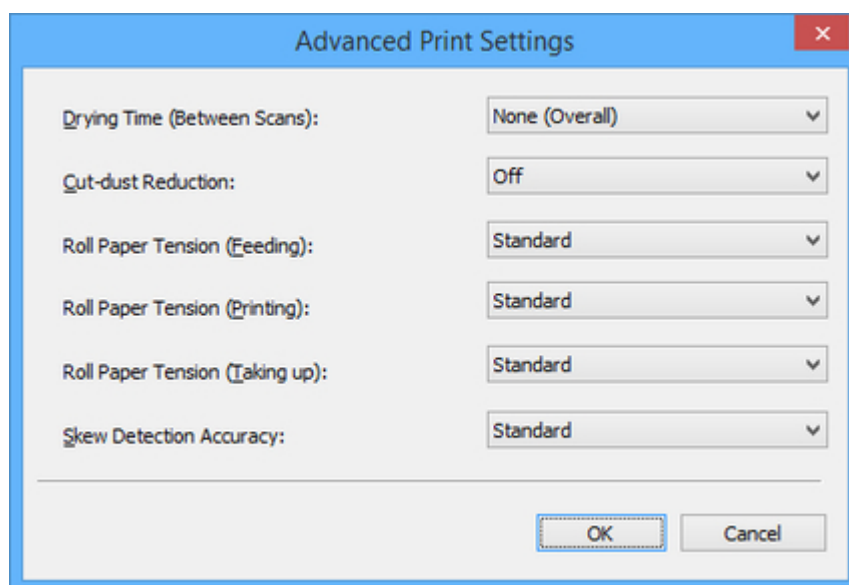
In this case, set **Auto Cut Setting** to **User Cut** on the **Advanced Print Settings** sheet in the **Edit Custom Paper** dialog box.

Paper Tube Size

Select the paper tube size of the roll paper loaded when printing.

Detailed Setting button

The **Advanced Print Settings** dialog box appears.



Drying Time (Between Scans)

When the time is set, after printing one line, the printer waits for the set time to elapse before printing the next line.

Set this option when color bleeding appears on the page.

None (Overall)

After one line is printed, the next line is immediately printed.

Drying time (Overall)

A drying interval is added for each line from printing start to end.

Drying time (leading edge only)

A drying interval is added for each line at the edge of the paper.

▶▶▶Note

- A band of uneven color may appear on the border between the areas with and without drying time.

Cut-dust Reduction

Selecting **On** applies ink at the cutting position when cutting paper and reduces the scattering of cut waste.

Also, on paper with paste, it makes it difficult for the paste to adhere to the cutter and prevents deterioration of cutter cutting performance.

Roll Paper Tension (Feeding)

Select the slack of roll paper at feeding.

Roll Paper Tension (Printing)

Select the slack of roll paper at printing.

Roll Paper Tension (Taking up)

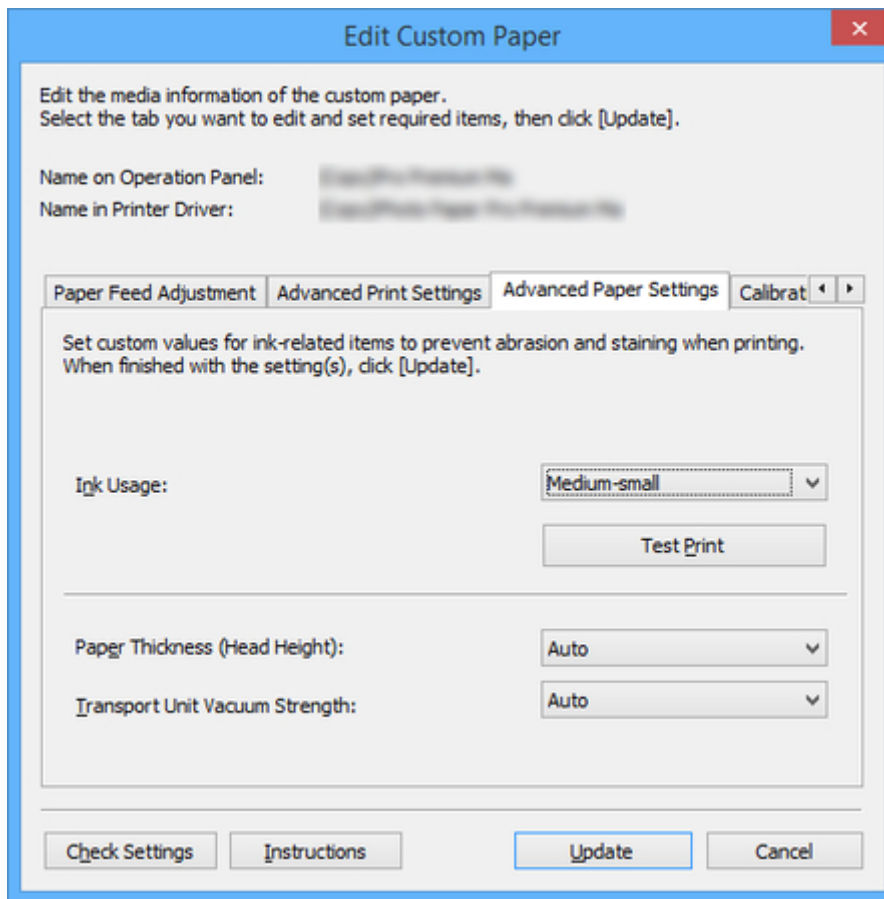
Select the slack of roll paper at winding.

Skew Detection Accuracy

For paper without a fixed width, select **Loose** to lower the precision of the paper skew detection function or select **Off** to disable the skew detection function.

However, if **Off** is selected and the paper skew is set, a paper jam can occur, and the platen can become dirty.

3. Advanced Paper Settings sheet



Important

- Depending on your model, some settings may not appear.

Ink Usage

Selects and sets the upper limit on the amount of ink to use when printing on customer paper from among several levels.

For details on setting the ink level, see "[Setting Ink Level](#)."

Important

- After setting the **Calibration Target** and **ICC Profile** sheets, changes to the ink usage on the **Advanced Paper Settings** sheet will disable the settings on the **Calibration Target** and **ICC Profile** sheets. In this case, set the **Calibration Target** and **ICC Profile** sheets again.
- If you change the ink usage level, the type of black ink that will be used may change.

Paper Thickness (Head Height)

Sets the height of the printhead. Set this higher if the printhead is rubbing against the paper.

Auto

Automatically sets the height of the printhead to match the selected base paper depending on the environment and printing mode.

Super Low/Low/Medium-low/Standard/Medium-high/High

You can specify six levels. Depending on your model, **Super Low** and **Medium-low** may not be available.

The higher the level, the more distance between the printhead and the paper.

Important

- If you set **Paper Thickness (Head Height)** too low, the printhead might rub against the paper. If the printhead rubs against the paper, there will be scratches in the printing results and the printhead may be damaged.

Transport Unit Vacuum Strength

Sets the vacuum strength for paper on the platen. If the printhead is rubbing against the paper, this may be fixed by increasing the strength of the vacuum. If the edges of images are washed out, this may be fixed by decreasing the strength of the vacuum.

Auto

Automatically sets the vacuum strength that matches the selected base paper.

Weak/Medium-weak/Standard/Medium-strong/Strong

You can select from among five available levels.

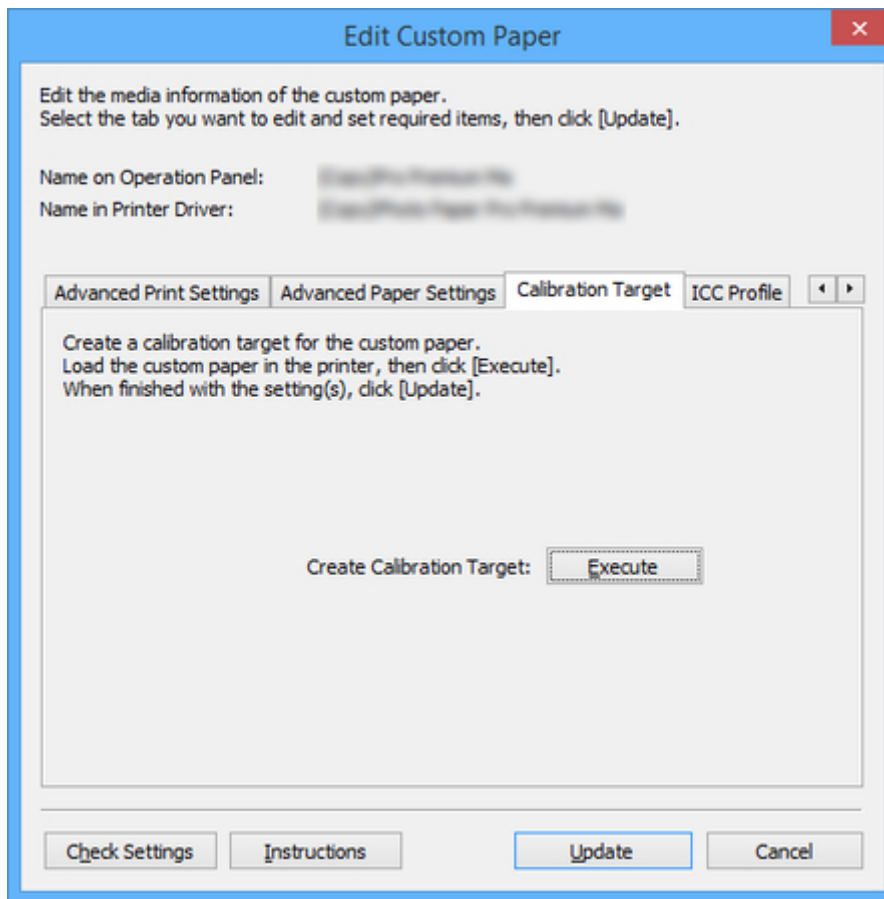
Note

- If the paper thickness is 0.004 inch (0.1 mm) or less, it is recommended that **Transport Unit Vacuum Strength** be set to **Weak**.

Important

- If changes are made to the **Transport Unit Vacuum Strength**, check that there is no rubbing against the paper. (If the printhead rubs against the paper, there will be scratches in the print results.) If the printhead rubs against the paper, the printhead may be damaged.

4. Calibration Target sheet



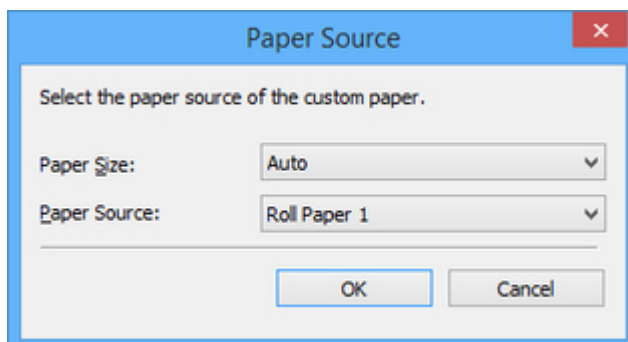
»»»Note

- If the **Calibration Target** of the selected base paper was set to **Not creatable** in the **Create Custom Paper** dialog box when the custom paper was added, the calibration target cannot be created.
- Calibration can be performed for custom paper if a calibration target has been created.

1. Click the **Execute** button.

The **Paper Source** dialog box appears.

2. Select the paper size of the custom paper and paper source where the custom paper is loaded.



»»»Important

- The paper sources that can be loaded vary depending on the custom paper.

- If you are using a PRO-1000 or PRO-500 model, only the rear tray can be used as the paper source for color calibration.

3. Load the custom paper in the paper source you selected.

»»»Important

- Do not load paper that is curled or that has already been printed on.
- If a paper source cannot be selected, load the paper into the paper source that is displayed in **Paper Source**.

4. Select the custom paper set on the printer control panel.

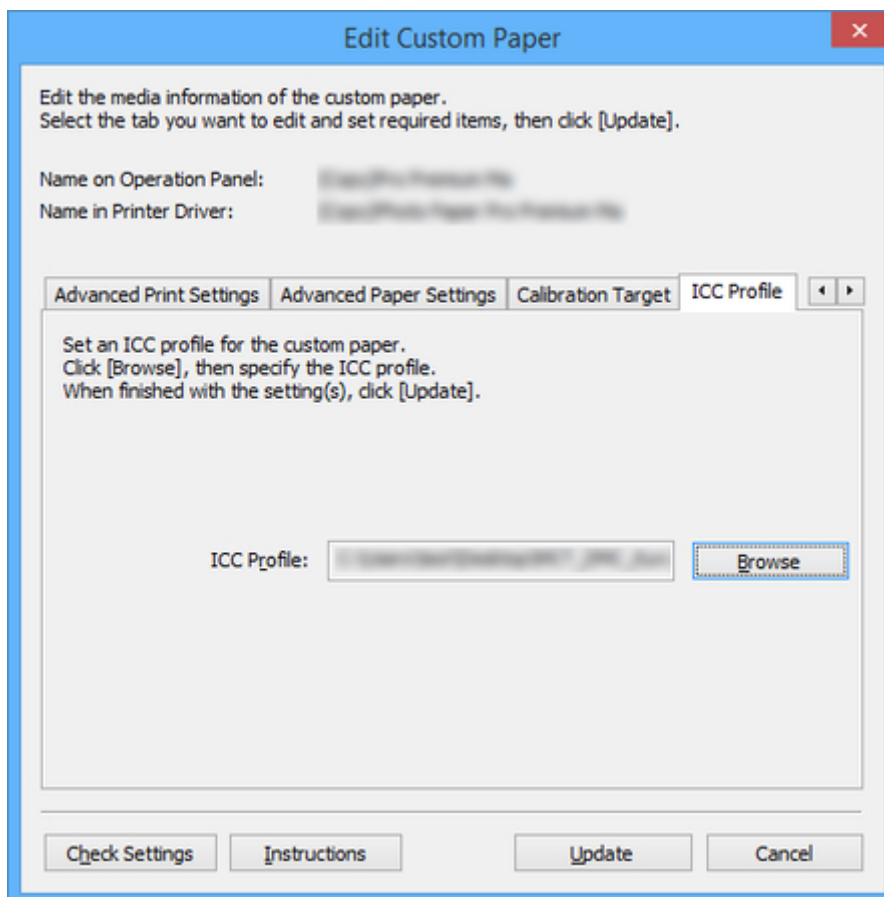
5. Click the **OK** button.

»»»Note

- It takes approximately 15 minutes until the calibration target is created.

The calibration target is created for the loaded custom paper.

5. ICC Profile sheet



If a suitable ICC profile has been provided for the custom paper to be edited, click the **Browse** button, and select the ICC profile.

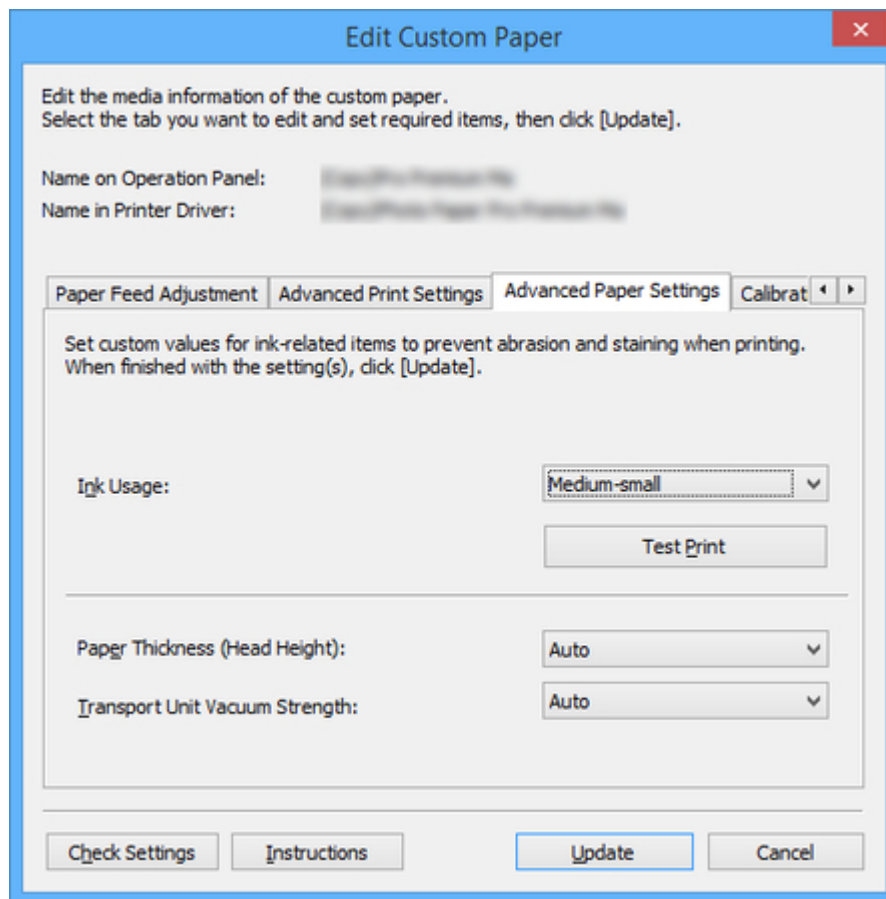
»»» Important

- Only the RGB print profile can be selected for the ICC profile.
Depending on the file size, you may not be able to use the profile.
- Alphanumeric characters, spaces, "-", "_", "(", and ")" can be used in ICC profile file names.
For ICC profile file names, up to 54 single-byte characters can be entered including the extension.

Setting Ink Level

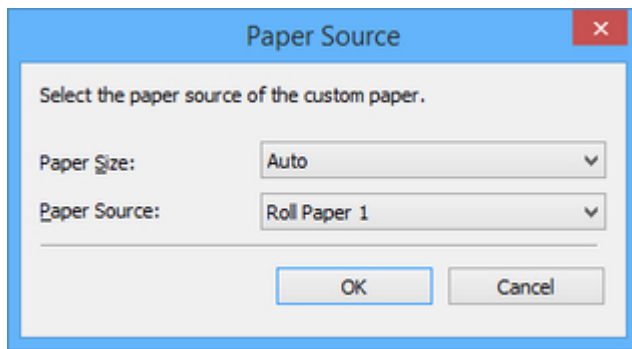
Use the following procedure to test printing at each level, and then determine and set the optimal level from those results.

1. Click the **Test Print** button.



The **Paper Source** dialog box appears.

2. Select the paper size of the custom paper and paper source where the custom paper is loaded.



Important

- The paper sources that can be loaded vary depending on the custom paper.

3. Load the custom paper in the paper source you selected.

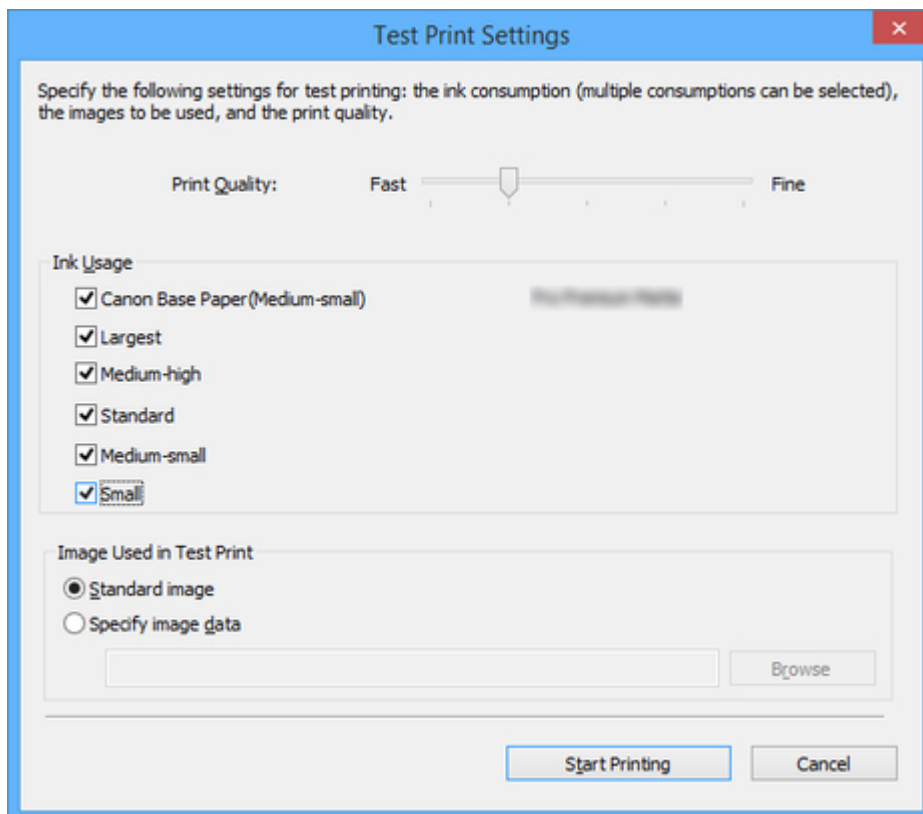
Important

- Do not load paper that is curled or that has already been printed on.

4. Select the custom paper set on the printer control panel.
5. Click the **OK** button.

The **Test Print Settings** dialog box appears.

6. Configure the print settings, and then click the **Start Printing** button.



Print Quality

Selects the print quality that is expected to be used frequently when printing on the custom paper being added. The test print is performed using the selected setting.

▶▶▶Note

- Depending on the base paper, some print quality settings may not be available.

Ink Usage

Select the ink usage level for test printing. **Canon Base Paper** is the ink usage for paper selected as the basis for the custom paper.

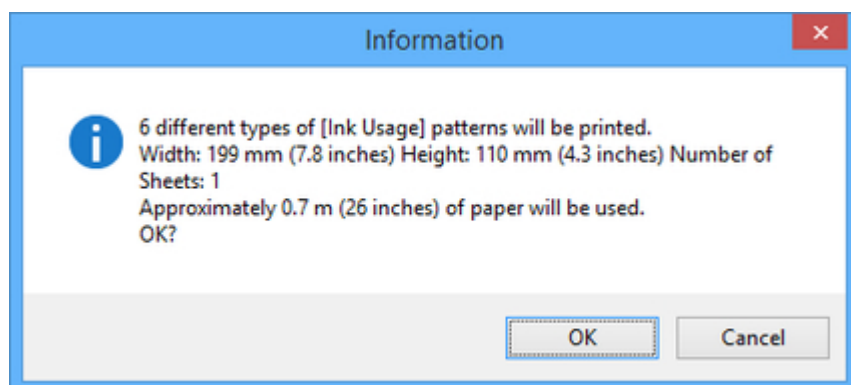
Image Used in Test Print

Sets the image to use in test prints.

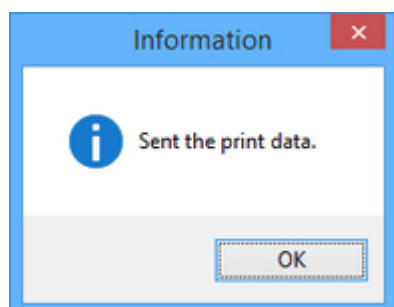
▶▶▶Note

- To use an image other than the standard image, use an uncompressed TIFF file where each RGB color is 8 bits.
- Images that are larger than the paper size may be printed with the image cropped.
- The maximum image size that can be used for test printing is 4 GB.

7. Click the **OK** button.



8. Click the **OK** button.



9. Select **Ink Usage** in the **Advanced Paper Settings** sheet.

Edit Custom Paper ✕

Edit the media information of the custom paper.
Select the tab you want to edit and set required items, then click [Update].

Name on Operation Panel:

Name in Printer Driver:

Set custom values for ink-related items to prevent abrasion and staining when printing.
When finished with the setting(s), click [Update].

Ink Usage: ▼

Paper Thickness (Head Height): ▼

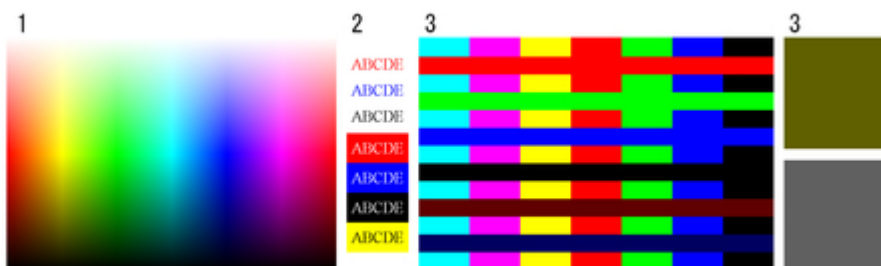
Transport Unit Vacuum Strength: ▼

Determines and sets the ink level that is expected to produce no bleeding or grazing of ink and produce the best test print results when viewed.

►►► Important

- After setting the **Calibration Target** and **ICC Profile** sheets, changes to the ink usage on the **Advanced Paper Settings** sheet will disable the settings on the **Calibration Target** and **ICC Profile** sheets. In this case, set the **Calibration Target** and **ICC Profile** sheets again.
- If you change the ink usage level, the type of black ink that will be used may change.

If you performed the test print using the standard image, focus on the following to determine the optimal ink level.



1. Focus on the smoothness of color production and gradation, and check there is no roughness or loss of color.
2. Focus on whether text has not bleeding and is not broken or difficult to read.

3. Focus on whether there is no bleeding at the boundary between different colors, and that there is no color variation in each color.

▶▶▶ **Note**

- Increasing the ink usage can widen the color area, and decreasing the ink usage can reduce ink bleeding and color collapse.
- Depending on the paper, the printing results may not change regardless of the ink usage level. If you have trouble determining the level, we recommend selecting the Canon base paper.
- Although the color tone may change when the ink usage is changed, at this point you should select the optimal level by only focusing on bleeding and scraping of ink. If the color tone needs to be adjusted, provide an ICC profile that matches the paper you are using, and select that ICC profile on the **ICC Profile** sheet.
- Because this settings imposes an upper limit on the amount of ink used during printing, the printing result might not change even if the level is changed depending on the image.