



Fiery® XF

The wide format ink jet RIP for today's opportunities

Production Printing Solutions



Increase your productivity and impress your customers with perfect images.

EFI's latest software RIP, EFI Fiery® XF, is the color management solution for large and superwide format ink jet printing devices. Your aqueous, solvent, eco-solvent or UV printers can achieve a new dimension in color quality and productivity on banners, posters, signs and vehicle wraps! Powered by Bestcolor® Technology and based on market-leading EFI Colorproof™ XF, Fiery XF allows your printing devices to produce the most accurate and vibrant colors in the industry. The solution's automated workflow maximizes your investment because it improves output quality and reduces production times, translating into greater profits, shorter turnaround times and increased customer satisfaction.

In addition, Fiery XF's fast RIP speed produces the best performance in all major printers including: VUTEk®, HP, Epson, Canon, Mimaki, Mutoh, Roland and others. It comes in three configurations to match all your business needs and employees' skill levels or can be customized to match your exacting standards. Try Fiery XF and see for yourself how these benefits can help you make more money and create happier, loyal customers.



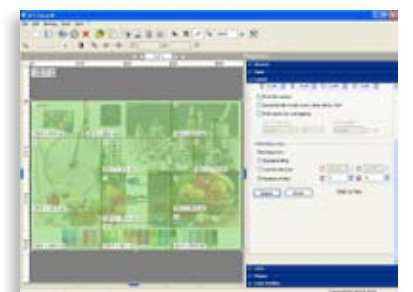
Makes printing easy!

Operators have various skill levels, so must a successful solution. Fiery XF's intuitive, graphical user interface and tutorial wizards shorten the learning curve — regardless of their skill level. In addition, its preview feature with sound zooming capabilities simplifies work routines and job management.

Increases your Output and Business

Fiery XF's high-processing speed, automated workflow and production features make your daily work more effective by putting the control in your hands. A few of the solution's advanced production features include:

- **Step & Repeat:** The feature lets you create a limitless amount of images. It also serves as an effective tool for producing tickets and labels, and lets you quickly generate patterns by defining whether or not these images are repeated horizontally, vertically or mirrored.
- **Nesting:** This function saves on material and reduces costs by enabling you to output any number of files together in one single job — even different file formats and files with different color spaces. The preview window also makes daily work easier, allowing you to view and edit the nesting layout using a wide range of functions such as moving, scaling, rotating, flipping and cropping. In addition, you can order, align and distribute multiple pages simultaneously.
- **Tiling:** Tiling divides images into strips or tiles and individually prints them. Features, such as freely definable overlapping, crop marks and tile numbering, simplify installation of tiled images, making Fiery XF ideal for billboards, stage graphics, wall murals or vehicle wraps. The automatic and manual tiling features give you maximum flexibility. By showing overlap, tile size and tile numbering, you get an accurate job overview before printing, allowing you to modify individual tile sizes and to reduce misprints. Moreover, it enables you to define each tile's size and to add new tiles wherever you like.



The cost-effective Fiery XF RIP comes with a full set of production tools such as Tiling, Nesting, Step & Repeat, and many others.

Improves customer satisfaction with high color quality easy-to-use interface.

EFI Fiery XF provides you with sophisticated ICC-based color management, enabling you to fulfill your customers' expectations for accurate and consistent colors every time. International spot color tables also are included to ensure correct colors no matter where you are in the world. The solution comes with color adjustment features, so you can manually influence and accurately fine-tune your documents' colors, satisfying even the most demanding customer. In addition, you can optimize existing profiles and generate new ones depending on the configuration.



The intuitive Fiery XF is easy to use, so it requires little or no operator training, regardless of your staff's skill level.



Intelligent Clean Colors

The new feature offers vivid, saturated color with optimum modulation and a clean appearance. It combines correct color reproduction and optimisation for eye-catching images with precise color matching where it's needed most, in skin tones, grays and spot colors. If you don't have time to adjust the colors, don't worry, clean color's automatic mode provides you with the best settings for your setup, taking the printer, media and profiles into consideration. For more control, choose "custom mode," so you can fine tune the "cleaning" to your precise needs.

Full Gamut Mode

Full Gamut Mode exploits the maximum color gamut of your printing equipment, ink set and media for perfect reproduction of colorful images.

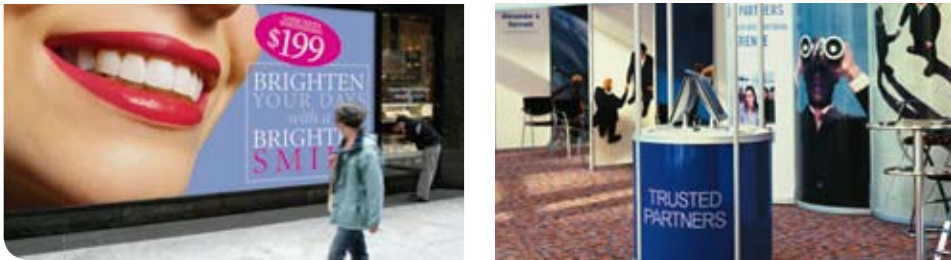
Spot Color Option

Fiery XF's Spot Color Option reproduces spot colors digitally by maximizing and fully utilizing your printer's color space to ensure the accurate, consistent spot color every time. In addition, you can define your customers spot colors in CMYK or LAB or simply measure them using an EFI ES-1000.

Linearisation Tool

The solution's Linearisation Tool works seamlessly with spectrophotometers, such as Barbieri and X-Rite (Gretag), to produce consistent, accurate color output every time. You also can create ICC profiles and optimize them for different media, ensuring that they achieve the highest quality results on any substrate such as vinyl, paper or fabrics. In addition, you can do re-linearisations based on measurements and visual evaluations, regardless of the operator's skill level. Just use the tutorial wizards to guide you step-by-step through the process.





Adapts to customers' specific needs.

With EFI Fiery XF's modular architecture and advanced job monitoring capabilities, you can decentralise operations to achieve greater control over different jobs. In addition, the solution's cross-platform integration allows you to use your existing Windows® and Macintosh® environments.

Fiery XF is available in the configurations Fiery XF Essential, Fiery XF Advanced and Fiery XF Premium. Detailed information about Fiery XF's configurations and benefits is included in the datasheets Fiery XF Benefits and Fiery XF Server & Client.

Furthermore various Product Options are available for Fiery XF. Please consider the datasheets for information on: Color Manager Option, Color Verifier Option, Dot Creator Option, Fiery Option, Output Option, Proofing Option, Spot Color Option.



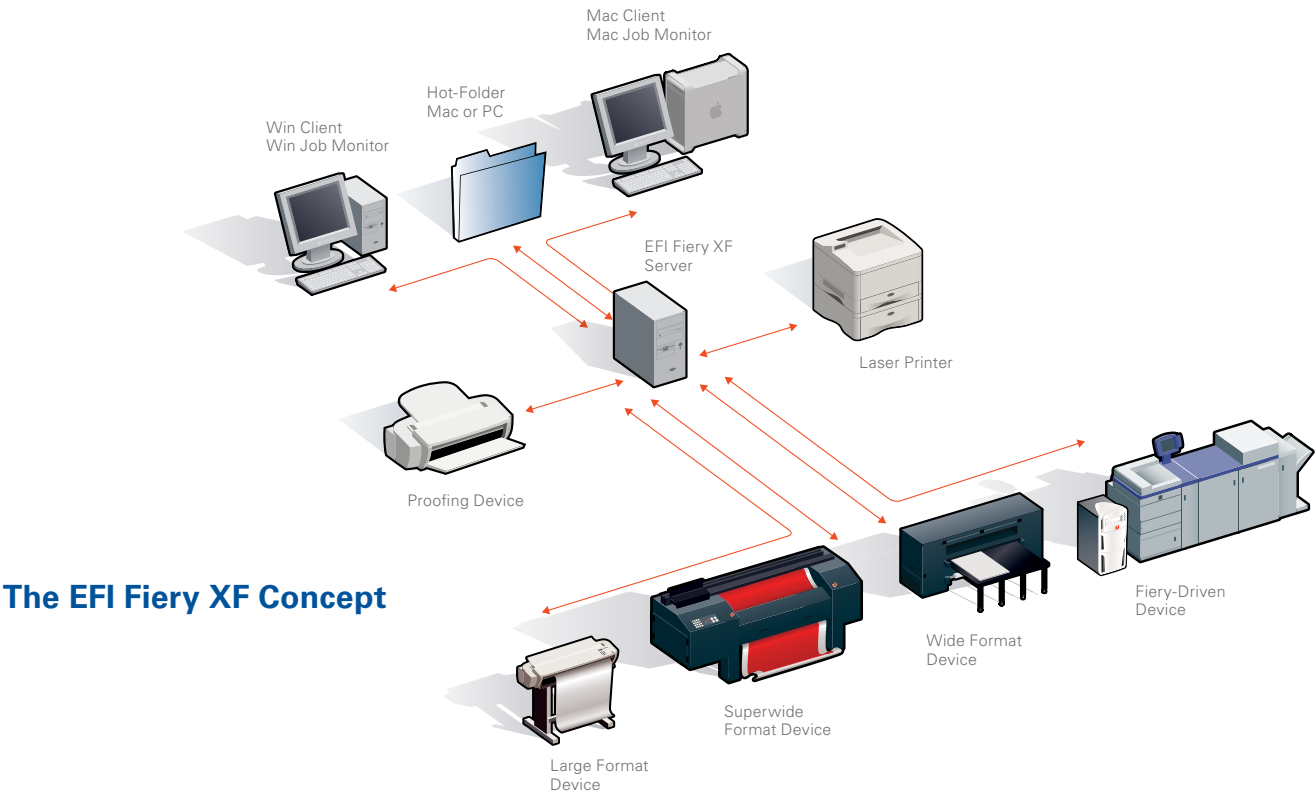
Expands your Business with Value-Added Customer Services

The solution allows you to do multiple tasks at the same time, enabling you to offer customers more services. Now, with Fiery XF, your large format printer can create proofs of a print job while your superwide printers print other jobs at the same time. These features improve workflow and machine utilization to increase profits.

With the solution's optional File Output Module, you can export color-managed TIFF or PDF files, ensuring that the color-managed TIFF files are printed in the best quality. Sending PDF files to the customer also ensures secure, quick approval and enhances their satisfaction. An added bonus is that PDF files are ideal for archiving.

Gives you a Scalable Platform for Growing Demands

Fiery XF's modular structure meets your current and future needs by simply adding options. For instance, add the Color Verifier Option to ensure consistent color quality on even your remote sites or connect xerographic devices with the Fiery Option to perform concept proofs or digital print runs for customer brochures or flyers.



The EFI Fiery XF Concept



Specifications

Hardware requirements:

- Operating Systems
 - Windows XP Home Edition, XP Professional, Win 2003 Server standard or;
 - Macintosh OSX 10.3 and 10.4
- Network
 - 10/100 Mbit Network (1GB Network recommended for large files)

Server Hardware:

- 2 GHz Pentium IV PC or higher (Double processor recommended) or;
- PowerPC Processor G5 or MacTel (native; Double processor recommended)
- 1 GB Ram per CPU
- 60 GB HDD
- 2 available USB ports

Client Hardware:

- 2 GHz Pentium IV PC or
- MacTel (native) or PowerPC Processor G4, G5
- 512 MB Ram
- 1 available USB port

Print to win.

EFI (www.efi.com) is the world leader in customer-focused digital printing innovation. EFI's award-winning solutions, integrated from creation to print, deliver increased performance, cost savings and productivity. The company's robust product portfolio includes Fiery® digital color print servers; VUTEK® superwide digital inkjet printers, UV and solvent inks; Jetrion® industrial inkjet printing systems; print production workflow and management information software; and corporate printing solutions. EFI maintains 26 offices worldwide.

Visit www.efi.com or call 800-875-7117 (US only).

POWERED BY



303 Velocity Way
Foster City, CA 94404
[650] 357 3500
www.efi.com

Auto-Count, Bliss, Changing the Way the World Prints, ColorWise, Command WorkStation, DocBuilder, DocBuilder Pro, DocStream, EDOX, EFI, Fiery, the Fiery logo, Fiery Driven, the Fiery Driven logo, OneFlow, PrinterSite, PrintFlow, PrintMe, PrintSmith Site, Prograph, Proteus, RIP-While-Print, Setting the Standard in Digital Printing, Ultravu and VUTEK are registered trademarks of Electronics for Imaging, Inc. in the U.S. Patent and Trademark Office and/or certain other foreign jurisdictions. Bestcolor is a registered trademark of Electronics For Imaging GmbH in the U.S. Patent and Trademark Office. AutoCal, Balance, BioVu, BioWare, Build, ColorCal, Digital StoreFront, Estimate, Fiery Link, Fiery Prints, Fiery Spark, FreeForm, Hagen, Jetrion, Logic, MicroPress, PhotoXposure, Printcafe, PrintSmith, PSI, PSI Flexo, Remoteproof, RIPChips, Scan, Screenproof, SendMe, Splash, Spot-On, UltraTex, UV Series 50, VisualCal, WebTools, the EFI logo, the Fiery Prints logo and Essential to Print are trademarks of Electronics for Imaging, Inc. Best, the Best logo, Colorproof, PhotoXposure, Remoteproof, and Screenproof are trademarks of Electronics For Imaging GmbH.

All other terms and product names may be trademarks or registered trademarks of their respective owners, and are hereby acknowledged.
© 2008 Electronics for Imaging

U231.12.07_USv2