



imagePROGRAF

imagePROGRAF
iPF6450

Optional Spectrophotometer for iPF6450 Printer

As an optional add-on to the iPF6450 printer, the SU-21 spectrophotometer is essential for anyone who is looking for efficiency in the proofing industry. This easy to install solution attaches right onto the front of the printer and provides the foundation for an advanced color management system.

- Native support of X-Rite new standard (XRGA)
- UV cut on/off switchable (both standard!)
- Fast measurement by high-speed scan (10 inches per second!)
- Wide measurable area
- Minimal ink used for patches
- Long life until factory calibration is necessary
- Fully automated mobile carriage for thicker media loading
- Non-Canon branded media support



iPF6450 Printer with optional SU-21 spectrophotometer



Specifications Overview

Model	X-Rite SU-21
MSRP	\$2,995
Color Measurement Width	480mm
Max. Media Thickness when SU-21 is in use: when SU-21 is not in use:	0.50mm 0.80mm
XRGA Compliant	YES
IISO 13655 Compliant	YES
User Switchable UV Filter	YES
White/Black Backing	Included on one strip
Support for Third Party RIPS	Most leading third party proofing RIPS

Features & Benefits

Conforms to XRGAs, the new X-Rite standard

By conforming to 2010 XRGAs measurement standard, color measurement values achieved by using the SU-21 spectrophotometer share the same results as other spectrophotometers such as i1iSis, i1Pro2, and Spectrolino.

User-switchable UV blocking filter

The included UV-blocking filter can be switched on and off according to the paper type loaded. Generally, UV-blocking filter is turned off for general proofing paper, and turned on for photo paper with fluorescent whitening agents, but separate sensors would be required.

Color Check

Checks for deviations in printed colors and determines whether or not a color calibration is necessary.

iPF6450 Printer

The imagePROGRAF iPF6450, 24-inch printer features a 12-Color LUCIA EX ink set that produces an incredibly large color spectrum and offers better scratch resistance and smoother gradations. The printer also boasts a sub-ink tank system for non-stop printing, an ability to support 300ml ink tanks, and a wide variety of included software solutions.

Mobile Carriage

The mobile carriage containing the spectrophotometer sensor moves to optimized positions according to color measurement stages, which are color chart printing, drying, and color measurement. This mechanism supports a wide range of media thicknesses.

User-switchable White or Black Backing Plates

Users can choose between a white or black backing by attaching the included dual backing plate to the unit. Traditionally, two separate backing strips would be required and the unused strip would have to be stored.

ICC profile support

The spectrophotometer is fully controlled by the third-party RIP software for automated color measurement of color patches, allowing a hands-off automatic profiling process. (Does not work with profiling software automatically).

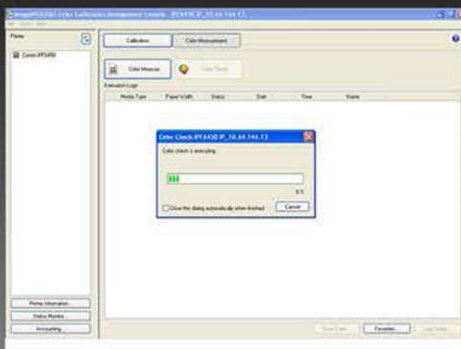
iPF6450 Multi-Sensor

The Multi-Sensor is a key component of the Color Calibration Management System to standardize iPF400 printers at any location. It can linearize the printer to factory standard at any time, compensating for environmental conditions and nozzle wear.

Color Calibration Management System

With this latest release of imagePROGRAF printers, Canon upholds its legacy of exceptional productivity and image quality and takes the maintenance of color management to a new level. Until now, the need for fleet-wide color calibration has been largely unaddressed. To achieve the required level of color consistency and accuracy, customers have been forced to rely on labor intensive and manual procedures that require each device in the fleet to be individually and painstakingly calibrated.

Users have the ability to centrally manage networked printers in a system from one easy to use software tool. The Color Calibration Management Console (CCMC) also allows for each printer to be monitored and managed from a remote location. Color Calibration targets created using the iPF6450's optional spectrophotometer can be linked across all new iPF 12-color printers. This allows for color calibration on custom media to be performed on all printers, including those without a spectrophotometer.



Color Calibration Management Console

Manage multiple
printers from one
location!

