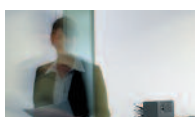
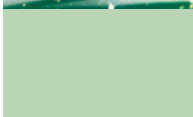




KONICA MINOLTA

Office system bizhub 350



bizhub 350

Your black-and-white office professional

The essentials of imaging

The one-stop office solution



One specialised device for all your needs. High quality, high-resolution black-and-white prints and copies, fast scans and flexible paper handling and finishing capabilities are the ingredients that went into producing the new bizhub 350.

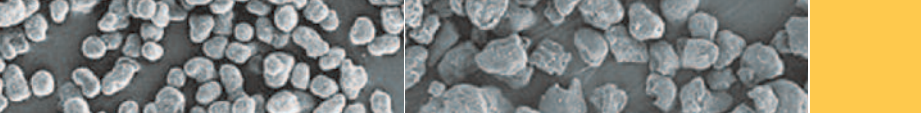
With a speed of 35 A4 images per minute, this compact network copier, printer, and high-speed scanner with optional fax functions is designed especially with the needs of mid-sized offices and departments in mind. If you have a variety of desktop printers and other devices scattered around your workplace, you should examine the many useful features of the multifunctional bizhub 350.

Not only does this versatile and easy to operate device do the work of many different machines, proven state-of-the-art technology like Konica Minolta's extra fine polymerised toner Simitri™ guarantees crisp high-quality black-and-white prints and copies. Your office workflow and efficiency will also benefit from its communication and networking capabilities as well as its sophisticated finishing, IT, and security features.

Let a professional do the job!

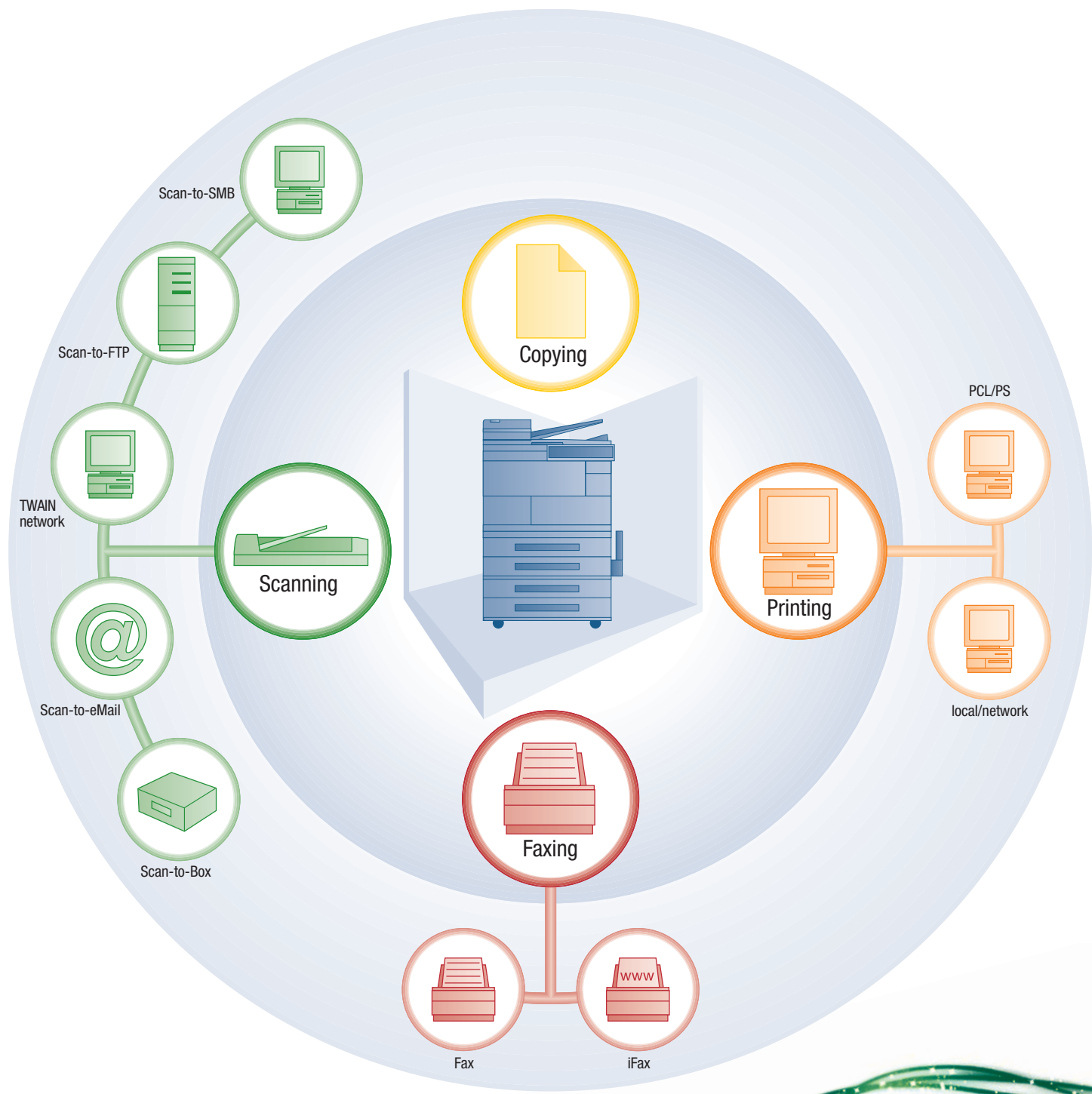
bizhub 350





Simitri™ polymerised toner

Conventional toner

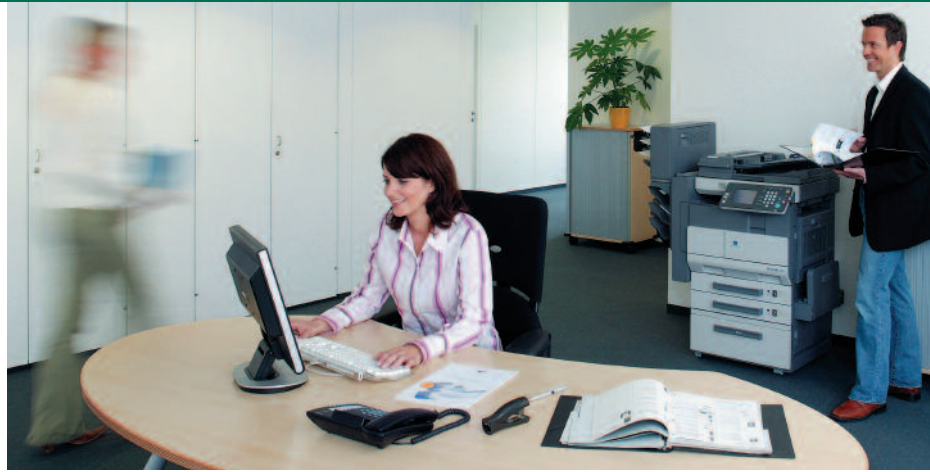


➔ Professional support features

Konica Minolta's pioneering Emperon™ print controller powers the comprehensive printing functions provided by the bizhub 350. PCL 5e/6 and PostScript 3 are standard and it supports useful features like the Secure Print function, which ensures that print jobs are only released after the correct password is entered at the machine.

- The standard web utilities provide automatic instant information on machine configuration, network settings and paper levels, for example.

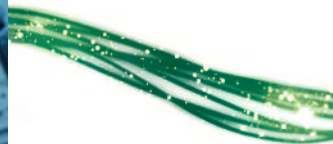
- The optional Super G3 fax offers high-speed faxing and fully digitised processing. It assures confidential fax transmission and receipt and provides for practical features like automatic routing, fax poll boxes, PC fax printing, quick memory/batch transmission as well as optional dual line support for the simultaneous transmission and receipt of faxes.



One compact device

Many professional

- With up to 70 originals per minute, the new bizhub 350 offers high-speed scanning capabilities that make easy central scanning in any network direction you need possible. It also features many different versatile functions that simplify workflow as well as internal and external office communications.
- You can now easily scan complex documents using the optional feeder and transmit them via eMail or send them to your PC or network server in PDF or TIFF format.
- LDAP (Lightweight Directory Access Protocol) support provides you with direct access to your company's eMail database, saving you the hassle of re-entering all addresses manually.



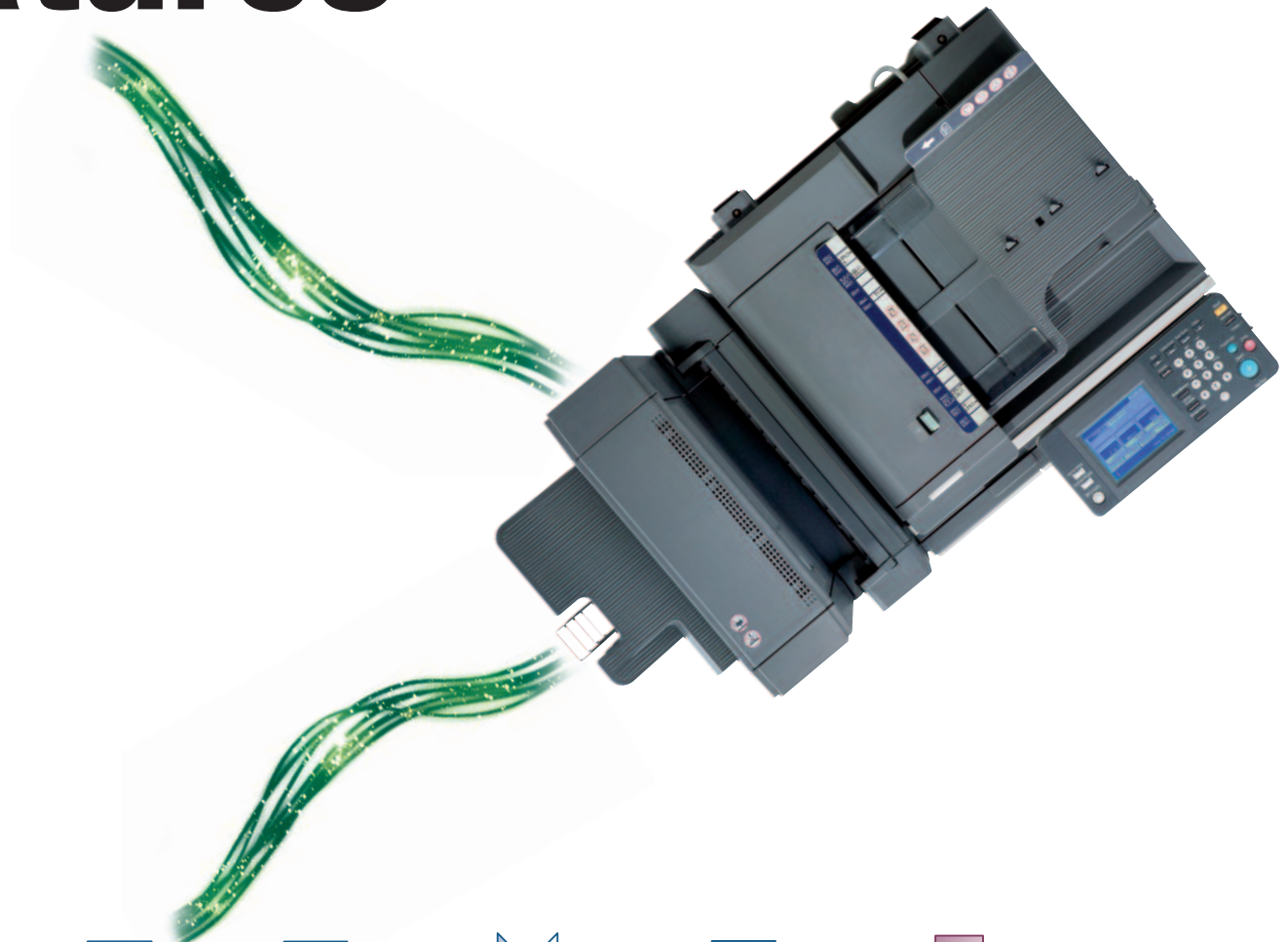
→ Professional handling and finishing

The entire range of Konica Minolta's bizhub devices are specialists in practical and easy operations: The bizhub 350 is no exception. It is designed to increase office workflow, save time, and lower costs.

- Paper and toner can be refilled on the fly, so the printing and copying functions never have to be interrupted.
- By adding one of the various paper cabinet options, the standard paper supply of 1,150 sheets can be increased to a maximum of 3,650 sheets.

- A wide range of specialised tasks useful for communications and presentations can be conveniently done in your workplace, saving the costs of outsourcing. With the bizhub 350, you can process on paper ranging from the postcard size A6 up to A3 for charts. Even envelopes can be fed from the bypass.
- You can also select paper from 50 g/m² up to 210 g/m², which means that you can easily produce a wide variety of top quality printed matter to meet all your business needs.
- The bizhub 350 provides extensive finishing alternatives ranging from offset sorting, mail-bin-sorting, multi-position stapling, punching, up to complete booklet production.

features



left top
stapling



stapling



booklet making
(folding & stapling)



four-hole punching



colour sheet insertion

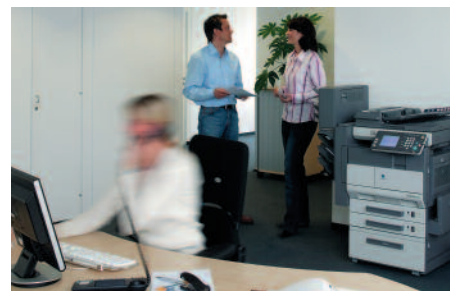
Professional administrative features



The far-reaching PageScope software utilities provided with the bizhub 350 are especially designed to make countless daily business operations more convenient, enhance workflow, and improve device administration.

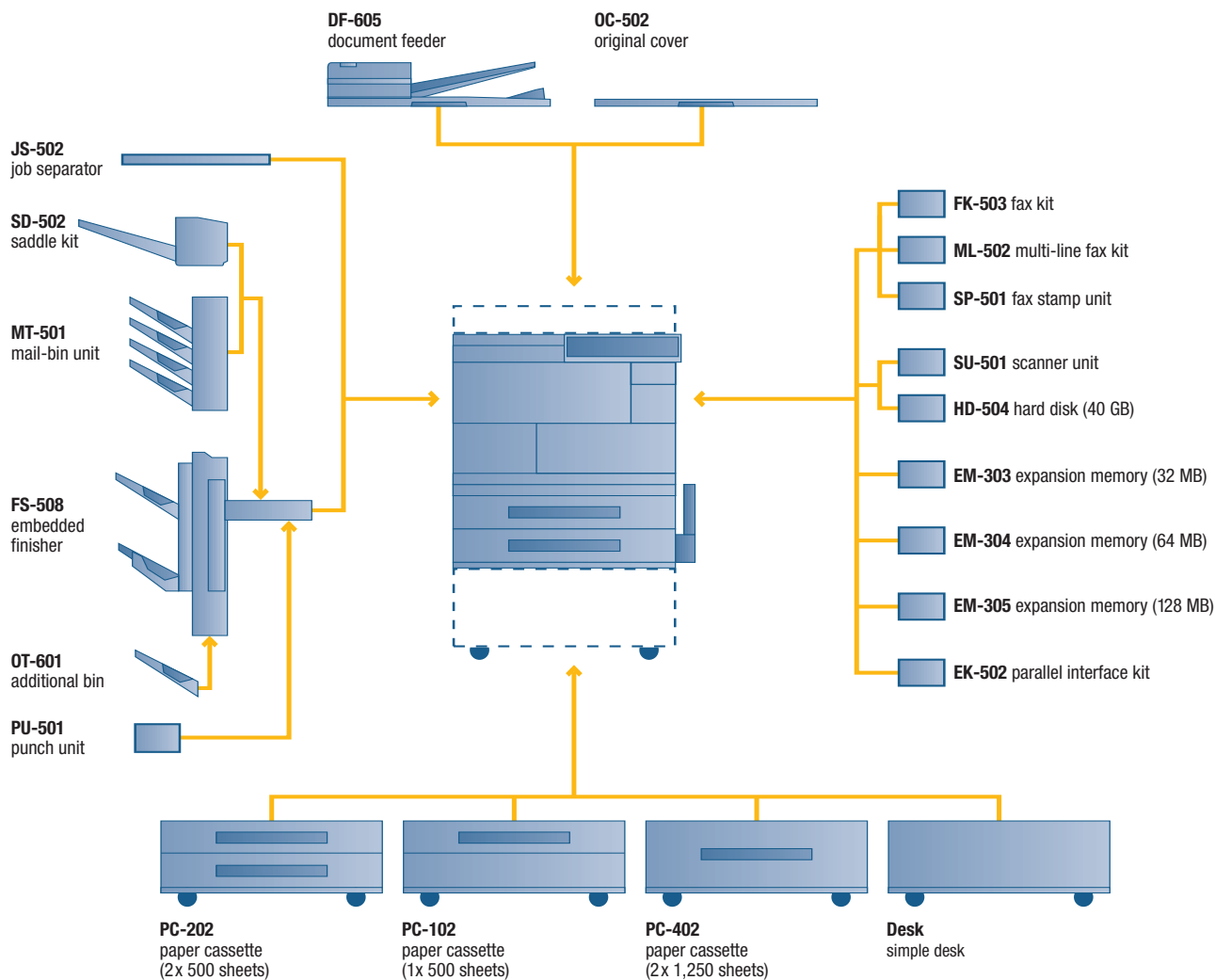
- The bizhub 350's Network Utility PageScope Web Connection simplifies controlling and administering device settings via a standard web browser. No additional software is necessary.
- With the document handling software PageScope Workware, merging, converting, forwarding and scanning of documents becomes child's play. Its file structure depicting miniature thumbnails of filed documents allows users to view files without opening the application.
- You can set up accounts to store and manage your files. This serves as an efficient cost control tool by allowing the administrator to limit print volumes.

Trust the professionals from Konica Minolta!





Your options at a glance





KONICA MINOLTA

Simitri



Technical specifications

Copier specifications

Copying process

Electrostatic laser copy

Toner system

Polymerised toner

Copy/print speed A4

35 ppm

Copy/print speed A3

20 ppm

1st Copy/print time

4.8 sec. (A4)

Warm-up time

Approx. 24 sec. (standard config.)

Approx. 26 sec. (with fax)

Copy resolution

600 x 600 dpi

Gradation

Equivalent to 256 gradations

Multicopy

1-999, countdown, interruption mode

Original format

A5-A3

Magnification

25-400% in 0.1% steps

Copier memory

192 MB standard

320 MB maximum

Copier hard disk (optional)

40 GB

Copy features

Page insertion, booklet creation, combination N-in-1, image rotation, overlay/stamp/watermark (with optional hard disk)

Printer specifications

Print resolution

Max.: 600 x 600 dpi

Controller CPU

64 Bit MIPS RISC CPU (300 MHz)

Page description language

PCL 5e/6

PostScript 3

Operating systems

Windows 98/ME/NT4.0/2000/XP/

Server 2003

Macintosh 9.2/10.2 or later

Interfaces

10-Base-T/100-Base-TX Ethernet,

USB 2.0; Parallel IEEE 1284 (optional)

Printer memory

192 MB/320 MB (shared with copier)

Printer hard disk (optional)

40 GB (shared with copier)

Scanner specifications

Scan speed

Up to 70 OPM (200 dpi via DF)

Up to 41 OPM (600 dpi via DF)

Scan resolution

Max.: 600 x 600 dpi

Scan modes

TWAIN scan¹⁾ *

Scan-to-eMail

Scan-to-FTP

Scan-to-SMB

Scan-to-HDD¹⁾

Scan-to-iFax

(*¹⁾with optional hard disk)

File formats

TIFF, PDF

Scan destinations

LDAP support

Fax specifications (optional)

Fax standard

Super G3

Fax resolution

Max.: 600 x 600 dpi (ultra-fine)

Fax compression

MH, MR, MMR, JBIG

Fax modem

Up to 33.6 Kbps

Fax functions

Polling, memory transmission,

broadcasting, PC fax

System specifications

Automatic document feeder (optional)

Up to 80 originals

Paper size

A6-A3

Paper weight

60-90 g/m² (from trays)

50-210 g/m² (from bypass)

Paper input capacity

Standard: 1,150 sheets

Max.: 3,650 sheets

Output capacity

Up to 1,200 sheets

Automatic duplexing (standard)

A5-A3

60-90 g/m²

Finishing modes (optional)

Offset, group, sort, staple, punch, centre-fold, booklet, mailbin sort

Copy/print volume (monthly)

Recommended: 10,000

Max.: 48,000

Power consumption

1,300-1,470 Watt

System dimension (W x D x H mm)

677 x 710 x 718

Weight

Approx. 74 kg

System features

Accounting

1,000 user accounts

Active Directory support

(user name + password)

User function access definition

Software

PageScope NetCare

PageScope NetSetup

PageScope Data Administrator

PageScope Workware

PageScope Web Connection

* from beginning 2006

All specifications relating to paper capacity refer to A4-size paper of 80 g/m² quality.

All specifications relating to scanning, copying or printing speeds refer to A4-size paper that is scanned, copied or printed crosswise in multipage, simplex mode.

The memory capacities listed refer to A4-size paper with the toner coverage detailed in the respective footnote.

Some of the product illustrations contain optional accessories.

Konica Minolta does not warrant that any prices or specifications mentioned will be error-free.

Specifications are subject to change without notice.

Microsoft, Windows and the Windows logo are trademarks, or registered trademarks, of Microsoft Corporation in the United States and/or other countries.

All other brand and product names may be registered trademarks or trademarks of their respective holders and are hereby acknowledged.

Printed in Germany on chlorine-free bleached paper.

Your Konica Minolta Business Solutions Partner:



Konica Minolta
Business Solutions Europe GmbH
Europaallee 17
30855 Langenhagen • Germany
Tel.: +49 (0) 511 74 04-0
Fax: +49 (0) 511 74 10 50